

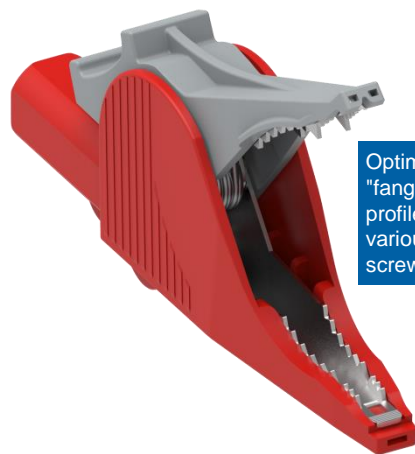
5066-IEC



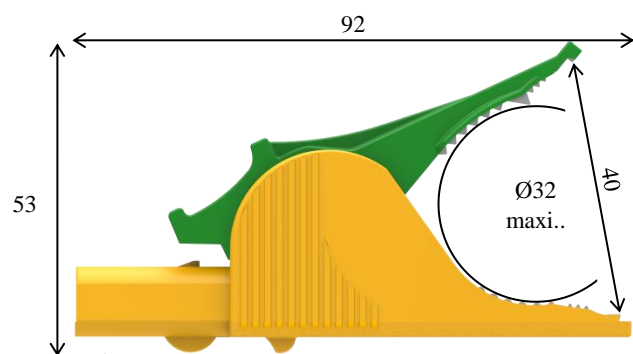
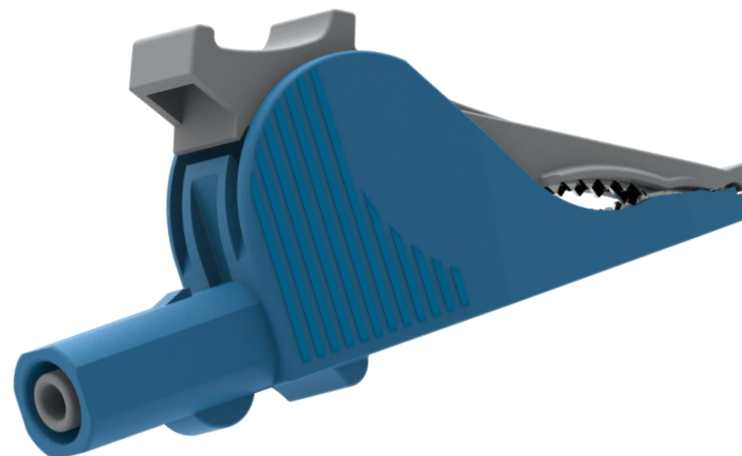
DATA SHEET (page 1 of 2).

Designation : Alligator Clip w/ 4 mm Banana (female) Jack (socket).

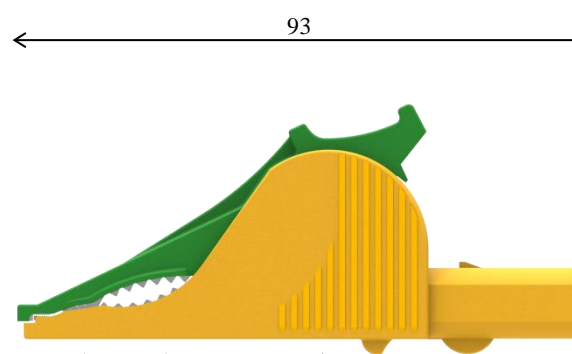
Applications : to grasp conductive parts safely. General purpose electric and electronic testing, controlling, and measuring.



Optimum jaw design including "fangs" and almond-shaped profile to clench well a lot of various items as bar, wire, screw, PCB pin, ...

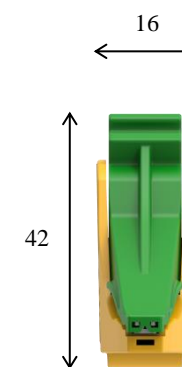


The 4 mm banana female connection complies with the 4 mm banana plugs of the worldwide most famous manufacturers.



(Bottom) European Union marking.

(Bottom) Electro-PJP's marking.
(French design and manufacturing.)



(Bottom) Voltage and current markings.

5066-IEC



Designation : Alligator Clip w/ 4 mm Banana (female) Jack (socket).

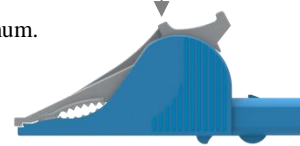
Electrical safety

1000 V CAT II
1000 V CAT III
600 V CAT IV

1000 V CAT II / 1000 V CAT III / 600 V CAT IV, reinforced insulation, 36 amperes (at +40 °C). According to EN / IEC 61010-031.

These specifications come from the creepage distances, clearances, accessible parts, and solid insulation of the clip. And the considered specifications of the environment are :

- pollution degree, 1 or 2 ;
- relative humidity, 80 % maximum for temperatures up to 31 °C decreasing linearly to 50 % relative humidity at +40 °C ;
- temperature range, +5 °C to +40 °C ;
- indoor use ; and
- altitude, 2000 m maximum.



Fingerguard. Keep behind this fingerguard to operate safely the clip while connecting to hazardous live voltages (more than 30 V AC and 60 V DC).

Operating temperature range

-20 °C mini., +80 °C maxi. (please see above too).

Conformity

- European Directive "Low Voltage Directive" 2014/35/UE.
- International / European standard EN / IEC 61010-031.
- European Directive "RoHS" 2011/65/EU. European Directive 2015/863/EU.
- European regulation n°1907 / 2006 "REACH".
- European regulation 2017 / 821 "Conflict minerals".

Environment

- "RoHS" compliant, Pb ≤ 4 %, Hg ≤ 0.1 %, Cr VI ≤ 0.1 %, Cd ≤ 0.01 %, PBB ≤ 0.1 %, PBDE ≤ 0.1 %, DEHP ≤ 0.1 %, BBP ≤ 0.1 %, DBP ≤ 0.1 %, and DIBP ≤ 0.1 %.
- "REACH" compliant, no substances from the candidate list of SVHC for authorization at mass concentrations greater than 0.1 %.

Materials

Conductors : nickel-coated steel, tinned steel, and brass. Insulators : please contact us.

Colors



Weight

0.020 kg.

Origin

Designed and manufactured in France.

Reliability benchmark

Year of 1st placing on the market 2005.

Packaging

Box of 10 units of the same color (default packaging).

Contact us at :

sales@electro-pjp.com

+33(0) 384 821 330

www.electro-pjp.com

ELECTRO-PJP
ZI «Charmes d'Amont»
13 rue de Madrid
39500 TAVAU
FRANCE