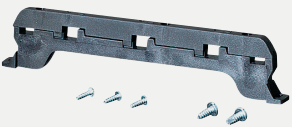
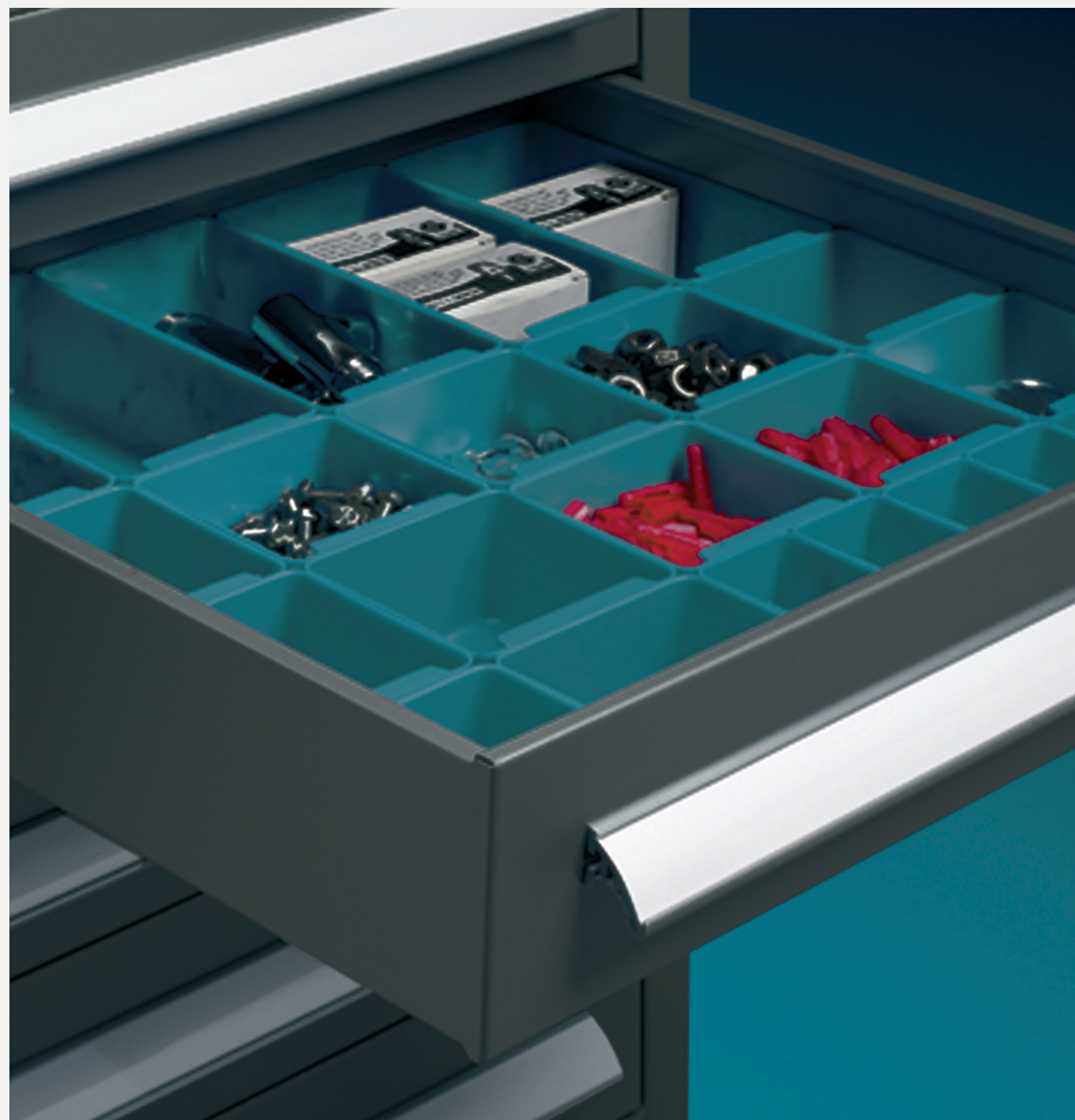
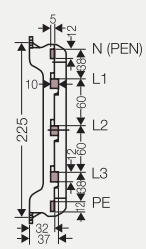


ACCESSORIES



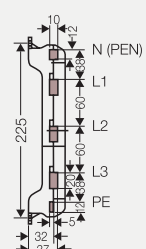
- Mi ST 25**
Rated current of busbar 250 A
Busbar support
- + For: Empty boxes
 - + Busbar dimensions:
L1-L3: 12 mm x 10 mm
N, PE: 12 mm x 5 mm
 - + N conductor with the same current carrying capacity as the phase conductors
 - + Number of poles: 5
 - + Included accessories: fastening material

Centreline spacing of busbars	60 mm
-------------------------------	-------



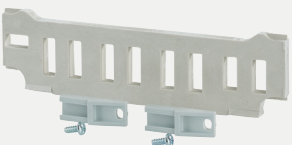
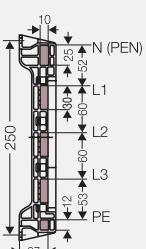
- Mi ST 41**
Rated current of busbar 400 A
Busbar support
- + For: Empty boxes
 - + Busbar dimensions:
L1-L3: 20 mm x 10 mm
N: 12 mm x 10 mm
PE: 12 mm x 5 mm
 - + N conductor with the same current carrying capacity as the phase conductors
 - + Number of poles: 5
 - + Included accessories: fastening material

Centreline spacing of busbars	60 mm
-------------------------------	-------



- Mi ST 63**
Rated current of busbar 630 A
Busbar support
- + For: Empty boxes
 - + Busbar dimensions:
L1-L3: 30 mm x 10 mm
N: 25 mm x 10 mm
PE: 12 mm x 10 mm
 - + N conductor with the same current carrying capacity as the phase conductors
 - + Number of poles: 5
 - + Included accessories: fastening material

Centreline spacing of busbars	60 mm
-------------------------------	-------



- Mi ST 10**
Rated current of busbar 1000 A
Busbar support
- + For: Empty boxes
 - + Busbar dimensions:
L1-L3: 30 mm x 10 mm
N: 25 mm x 10 mm
PE: 20 mm x 10 mm
 - + N conductor with the same current carrying capacity as the phase conductors
 - + Number of poles: 5
 - + Included accessories: fastening material

Centreline spacing of busbars	60 mm
-------------------------------	-------

