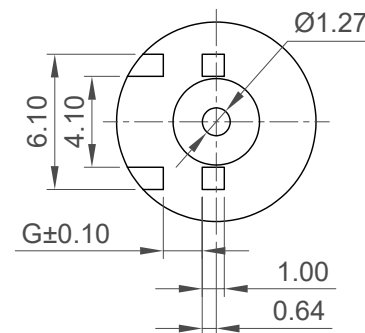
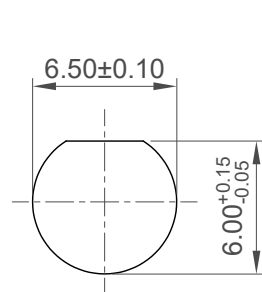
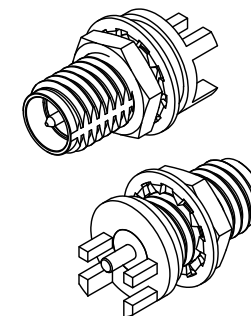


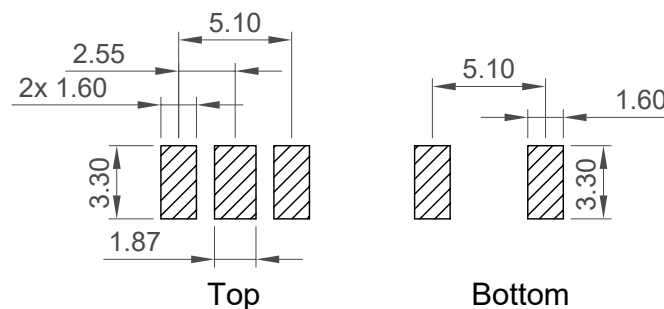
Dimension G	Recommended PCB thickness
0.95	0.80
1.35	1.20
1.75	1.60



IP Rated Even When Unmated



Recommended Mounting Hole



Top

Bottom

Recommended Foot Print

Tolerance: ±0.05

Specifications

Material

Body: Brass, Nickel Plated.
Pin: Brass, Gold Plated.
Insulator: Teflon, White.
O-ring: Silicone Rubber, Red.
Washer: Brass, Nickel Plated.
Nut: Brass, Nickel Plated.

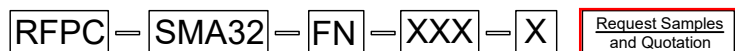
Electrical

Impedance: 50 Ohm
Working Frequency Range: DC - 6GHz

Mechanical & Environmental

Operating Temperature: - 55 °C to +125°C
Ingress Protection Rating: IP67
IP6x - Dust tight - no particle ingress.
IPx7 Waterproof for 30 minutes up to 1m underwater.
Recommended PCB Thickness: 0.80mm/1.20mm/1.60mm.
Other PCB thickness available on request

Ordering Grid



Dimension G Options:
095 = 0.95mm, for 0.80mm PCB thickness
135 = 1.35mm, for 1.20mm PCB thickness
175 = 1.75mm, for 1.60mm PCB thickness

Washer and nut options:
A = All Assembled with Connector (Standard)
Blank = Separately Packed

Part Number		Product Description	
RFPC-SMA32-FN		RP SMA Bulkhead Jack With O-ring, Edge Mount,	
Drawing Date		IP67, 6GHz	
25th February 2025			
By	CC	Tolerances (Except as Noted)	Units:
Detail	Drawing Release	Length	Metric (mm)
Revision	A1	Angle	± 1°
Date	07/04/25	X.X ± 0.50	
		X.XX ± 0.15	
		X.XXX ± 0.10	
		3rd Angle Projection	
		RoHS COMPLIANT 2011/65/EU	
		This drawing is confidential and copyright of Global Connector Technology, Ltd (GCT). This drawing must not be copied or disclosed without written consent. E & OE	
		Not to Scale	Drawn By CC
		Sheet No. 1/1	

GCT
www.gct.co