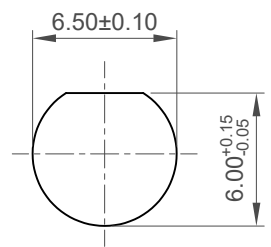
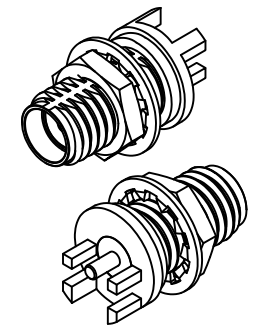
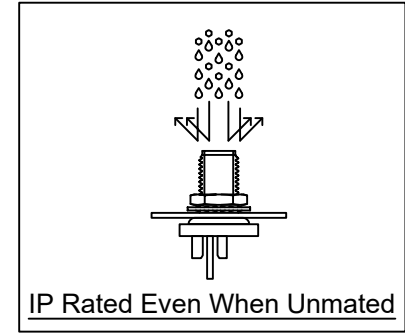
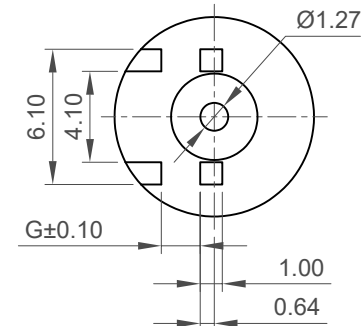
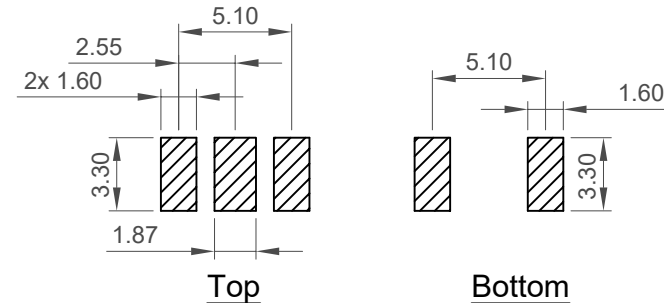


Dimension G	Recommended PCB thickness
0.95	0.80
1.35	1.20
1.75	1.60



**Recommended Mounting Hole**



**Recommended Foot Print**  
Tolerance: ±0.05

**Specifications**

**Material**  
 Body: Brass, Nickel Plated.  
 Pin: Brass, Gold Plated.  
 Insulator: Teflon, White.  
 O-ring: Silicone Rubber, Red.  
 Washer: Brass, Nickel Plated.  
 Nut: Brass, Nickel Plated.

**Electrical**  
 Impedance: 50 Ohm  
 Working Frequency Range: DC - 6GHz



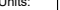
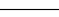

**Mechanical & Environmental**  
 Operating Temperature: - 55 °C to +125°C  
 Ingress Protection Rating: IP67  
*IP6x - Dust tight - no particle ingress.*  
*IPx7 Waterproof for 30 minutes up to 1m underwater.*  
 Recommended PCB Thickness: 0.80mm/1.20mm/1.60mm.  
 Other PCB thickness available on request

**Ordering Grid**

RFPC - SMA31 - FN - XXX - X Request Samples and Quotation

Dimension G Options:  
 095 = 0.95mm, for 0.80mm PCB thickness  
 135 = 1.35mm, for 1.20mm PCB thickness  
 175 = 1.75mm, for 1.60mm PCB thickness

Washer and nut options:  
**A = All Assembled with Connector (Standard)**  
 Blank = Separately Packed

Part Number			Product Description			<div> <b>www.gct.co</b></div>	
RFPC-SMA31-FN			SMA Bulkhead Jack With O-ring, Edge Mount, IP67, 6GHz				
Drawing Date							
17th February 2025							
By	CC	Tolerances (Except as Noted)		Units:	<div> This drawing is confidential and copyright of Global Connector Technology, Ltd (GCT). This drawing must not be copied or disclosed without written consent. E &amp; OE</div>		
Detail	Drawing Release	Length	Angle	Metric (mm)			
Revision	A1	X.X ± 0.50	± 1°	<div> 3rd Angle Projection</div>			
Date	07/04/25	X.XX ± 0.15 X.XXX ± 0.10					
<div> <b>RoHS</b> COMPLIANT 2011/65/EU  <b>Deca-SIDE</b></div>					<div>Not to Scale</div>	<div>Drawn By CC</div>	<div>Sheet No. 1/1</div>

