

RFPC-SMA16-FN: SMA Straight Bulkhead Jack With O-ring, PCB Connector, Rated to IP67/68, 6GHz

Material and Plating:

Insulator A: Teflon

Insulator B: Teflon

Body: Brass, Gold Plated

Pin: Phosphor Bronze, Gold Plated

Gasket: Silicon, Color: Red

O-Ring: Silicone, Color: Red

Washer: Brass, Gold Plated

Nut: Brass, Gold Plated

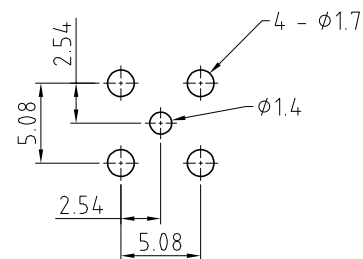
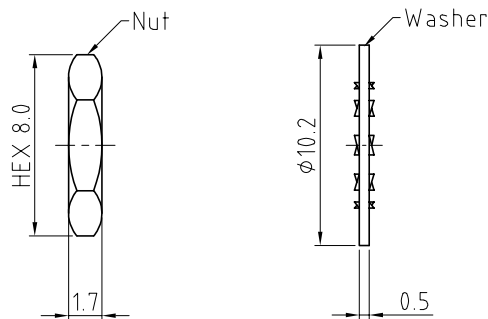
Environmental:

A. Tested to:

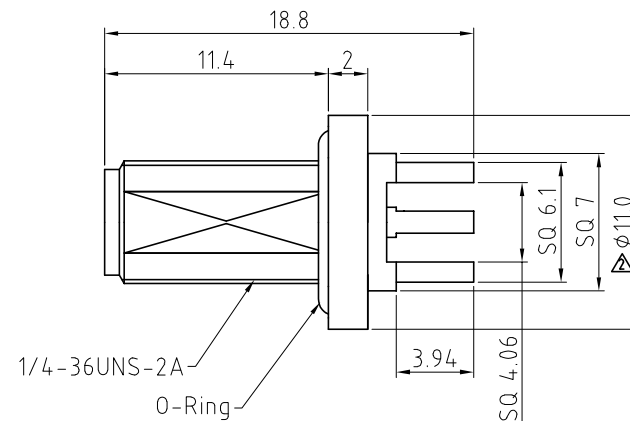
- IP6x - Dust tight - no particle ingress.
- IPx7 Waterproof for 30 minutes up to 1 meter underwater.
- IPx8 Waterproof for 48 hours at 1 meter underwater.

Notes:

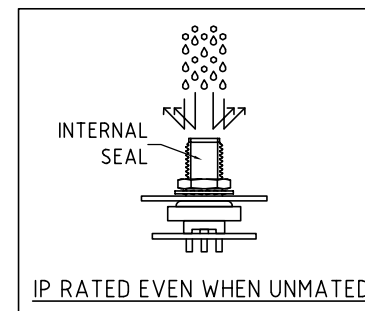
- Packaging Type: Tray.
- Working Frequency Range: DC-6GHz.
- Operating Temperature: -65°C~+165°C.
- The waterproof sealing function will work once the sealing o-ring is completely pressed and fitted to the device's panel.
- Impedance: 50 ohm.



Recommended PCB Hole Layout



Recommended Mounting Hole

Applicable Panel Thickness:
Min. 0.7mm ~ Max. 3.2mmHOW TO ORDER
RFPC - SMA16 - FN - XWASHER AND NUT OPTIONS:
BLANK = SEPARATELY PACKED (STANDARD)
A = ALL ASSEMBLED WITH CONNECTOR

REV. DATE & DRN	10 30/07/18 - NYW RELEASE
11 30/08/18 - NYW	AMEND DIMENSION.
12 30/08/18 - NYW	AMEND PIN MATERIAL.
13 18/02/19 - NYW	AMEND DIMENSION.
14 27/05/19 - NYW	ADD WASHER & NUT OPTIONS.
15 25/02/20 - NYW	ADD OPERATING TEMP.
16 14/02/23 - NYW	ADD DIMENSIONS.
17 20/03/24 - CC	ADD NOTE 4.
18 31/03/24 - CC	ADD IMPEDANCE.
19 24/10/24 - CC	ADD PANEL THICKNESS.
20 09/05/25 - NYW	ADD IP RATING VIEW.
21 09/05/25 - NYW	Change frequency as 6GHz.
22 09/05/25 - NYW	Change operating temp as -65°C~+165°C.
23 09/05/25 - NYW	Add GCT logo.
24 09/05/25 - NYW	Add GCT logo.

Scale: NTS	THIRD ANGLE	Unstated Tolerances:
Drawn: CC		.X ±0.2
App'd: XXX	Title SMA PCB Connector	.XX ±0.2
Date: 9 MAY '25	Revision: 2.0	.XXX ±0.2
	Unit: mm	ANGLES N/A

IP Rated RF Products			Drawing Number: RFPC-SMA16-FN
www.gct.co	www.gradconn.com	Sheet 1 of 1	
© THIS DRAWING IS CONFIDENTIAL AND MUST NOT BE COPIED OR DISCLOSED WITHOUT WRITTEN CONSENT			Drawing © E and O E