

RFPC-SMA15-FN: RP SMA Right Angle Bulkhead Jack With O-ring, PCB Connector, Rated to IP67/68, 6GHz

Material and Plating:

Insulator A: Teflon
Insulator B: Teflon
Insulator C: Teflon
Body A: Brass, Gold Plated
Body B: Brass, Gold Plated
Pin A: Brass, Gold Plated
Pin B: Brass, Gold Plated
Gasket: Silicon, Color: Red
O-Ring: Silicone, Color: Red
Cap: Brass, Gold Plated

Washer: Brass, Gold Plated

Nut: Brass, Gold Plated

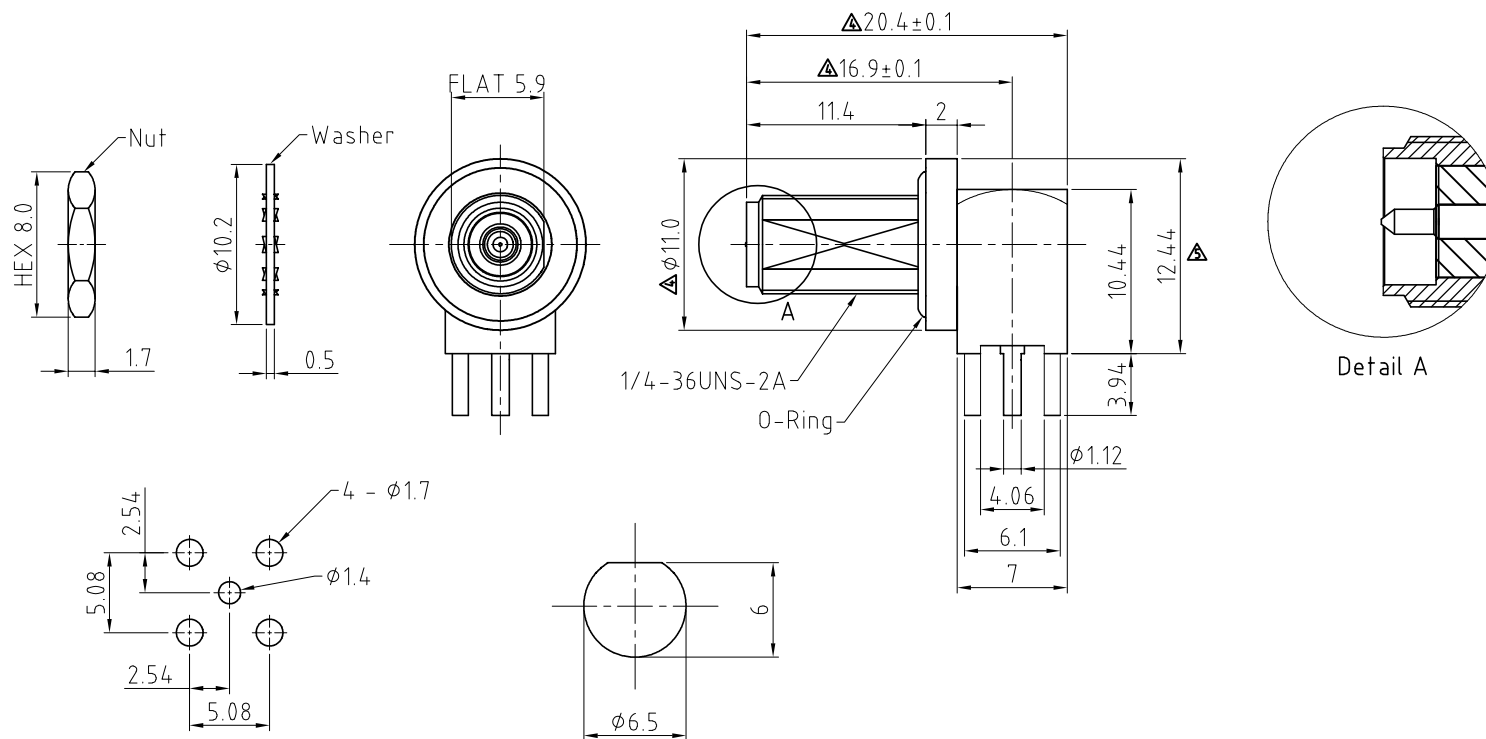
Environmental:

A. Tested to:

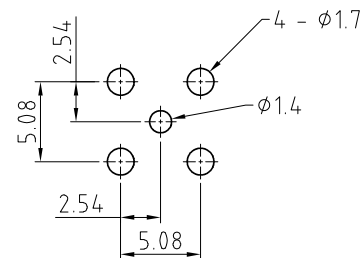
- IP6x - Dust tight - no particle ingress.
- IPx7 Waterproof for 30 minutes up to 1 meter underwater.
- IPx8 Waterproof for 48 hours at 1 meter underwater.

Notes:

- Packaging Type: Tray.
- Working Frequency Range: DC-6GHz.
- Operating Temperature: -65°C~+165°C.
- Impedance: 50 ohm.

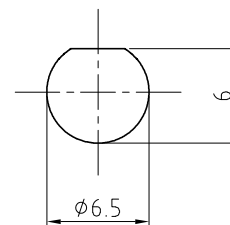


Recommended PCB Hole Layout



Recommended Mounting Hole

Applicable Panel Thickness:
Min. 0.7mm ~ Max. 3.2mm



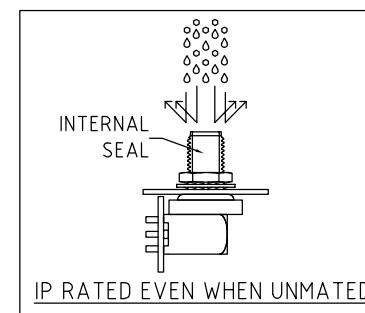
HOW TO ORDER

RFPC - SMA15 - FN - X

WASHER AND NUT OPTIONS:

BLANK = SEPARATELY PACKED (STANDARD)

A = ALL ASSEMBLED WITH CONNECTOR



REV. DATE & DRN
1.0 11/17/17 - NYW RELEASE
1.1 25/07/18 - NYW RELEASE
1.2 18/02/19 - NYW
1.3 20/09/19 - NYW
1.4 25/11/19 - NYW
1.5 13/07/23 - NYW
1.6 14/02/23 - NYW
1.7 07/09/23 - NYW
1.8 07/09/23 - NYW
1.9 31/07/24 - CC
2.0 09/05/25 - NYW
ADD GCT LOGO.

Scale: NTS	THIRD ANGLE	Unstated .X .XX .XXX ANGLES	Tolerances: ±0.20 ±0.20 ±0.20 ±2°
Drawn: CC		Title SMA PCB Connector	
App'd: XXX			
Date: 9 MAY '25	Revision: 2.0	Unit: mm	

IP Rated RF Products	 www.gct.co	 www.gradconn.com	Type: RFPC-SMA15-FN
			RFPC-SMA15-FN
			Drawing Number:
			Sheet 1 of 1
			Drawing © E and O E