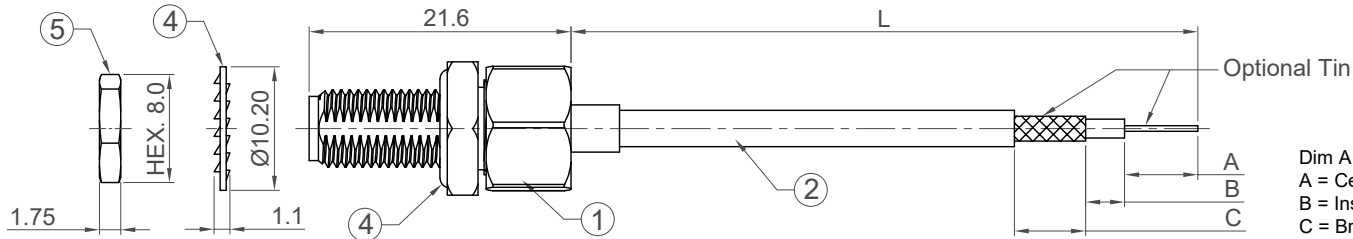
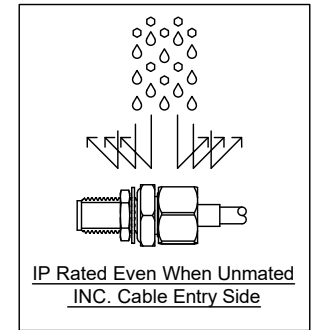


H
G
F
E
D
C
B
A



Patent Pending
GB2416077.2
GB2416078.0



Dim A / B / C stands for
A = Center conductor
B = Insulator
C = Braid.

Specifications

Material

- Brass SMA Sealed Jack with O-ring, Gold Plated, Rated to IP68/69K, P/N: RFCT-SMA112-B-F-ALS-S (with silicone rubber gasket) Also applicable for bulkhead-mount (washer&nut provided)
- Coaxial Cable, ALSR-100*, Color: Black. (Specification equivalent to LMR-100®)
- O-ring: Silicone Rubber, Red
- Washer: Brass, Gold Plated
- Nut: Brass, Gold Plated

Electrical

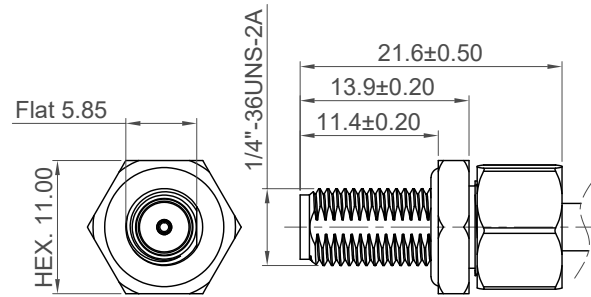
- Impedance: 50 Ohm
- Working Frequency Range: DC - 6GHz

Mechanical & Environmental

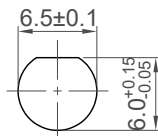
- Operating Temperature: -40°C to +85°C
- Ingress Protection Rating: IP68/IP69K
IP6X - Dust tight - no particle ingress.
IPX8 waterproof for 48 hours at 1 meter underwater.
IPX9K water spray, 14-16L per minute, at 8,000 ~ 10,000 Kpa, at 100-150mm distance for 30 seconds.

Notes:

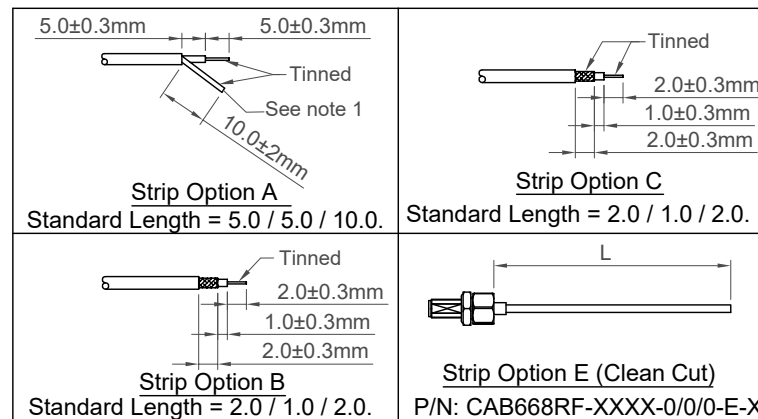
- Twisted braid or flexible copper wire, length = A (center conductor) + B (insulator) = 6.0mm min. length 6.0mm - 9.9mm: twisted braid. length +10mm: flexible copper wire.
- This is our standard offering, special designs are available, including custom tolerances and special braid tinning designs. Please contact GCT for more information.
- Center conductor and twisted braid of coax cable is tinned. when braid length exceeds 10mm length of tinned copper wire is soldered to the braid/shield of the coax cable which allows soldering to PCB.
- It is intended that mounting of this connector is achieved using the nut and washer provided. please contact GCT for advise if planning to use a different method of mounting.



SMA Jack Detail Dimension



Recommended SMA Jack Mounting Hole
Applicable Panel Thickness:
Min. 0.7mm ~ Max. 3.2mm



Ordering Grid

CAB668RF - XXXX - X.X / X.X / X.X - X - X Request Samples and Quotation

"L" Length in mm:
eg: 100mm = 0100
(Min. 0050 - Max. 5000)
Standard = 0305, 0610, 0915)
Tolerance: 50mm: ±2mm.
51-200mm: ±5mm.
201-500mm: ±7mm.
501-999mm: ±10mm.
≥1000mm: ± (Lx0.02)mm

Washer and nut options:
A = All Assembled with Connector (Standard)
Blank = Separately Packed

Strip and tin options:
A = Center conductor & twisted braid/soldered copper wire tinned (see note 3 for solder to PCB application)
B = Stripped, end A tinned
C = Stripped, end A & c tinned
E = Clean cut

A/B/C strip dimension in mm
For standard length please refer to drawings.
(Specials available upon request.)

Part Number		Product Description	
CAB668RF		SMA Sealed Jack To Strip/Tin, With O-ring, Brass,	
Drawing Date		IP68/69K, ALSR-100 Cable	
25th February 2025			
By	CC	Tolerances (Except as Noted)	Units:
Detail	Drawing Release	Length Angle	Metric (mm)
Revision	A1	X. ± 0.20 X.XX ± 0.10 X.XXX ± 0.05	±1°
Date	01/04/25		3rd Angle Projection



This drawing is confidential and copyright of Global Connector Technology, Ltd (GCT). This drawing must not be copied or disclosed without written consent. E & OE

GCT
www.gct.co

Not to Scale
Drawn By CC
Sheet No. 1/1