

SPECIFICATIONS

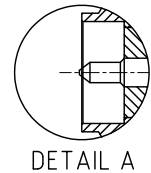
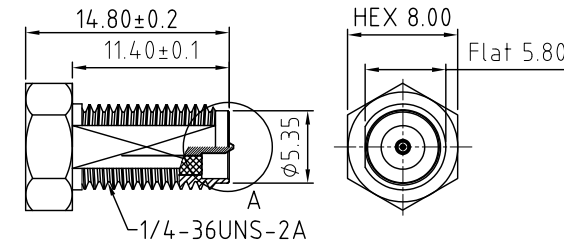
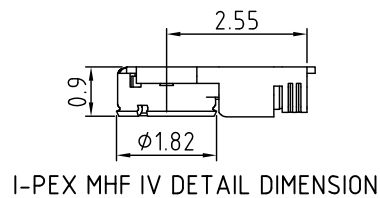
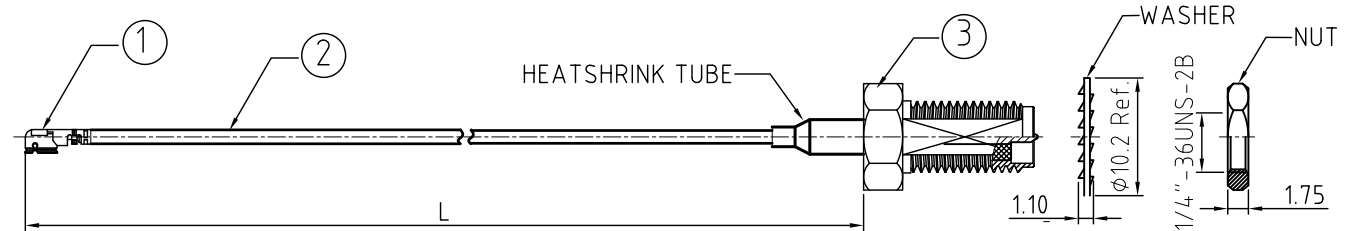
1. I-PEX MHF IV PLUG, P/N: 20448-001R-08.
2. $\phi 0.81$ MM COAXIAL CABLE, COLOR: GRAY.
3. RP SMA STRAIGHT BULKHEAD JACK, GOLD, P/N: RFCT-SMA114-F08.

NOTES:

1. THE ORIENTATION OF CONNECTORS ON DRAWING IS FOR REFERENCE ONLY, IF THE ORDER IS LEFT BLANK THE CONNECTOR WILL NOT HAVE FIXED ORIENTATION.
2. FIXED ORIENTATION IS SUGGESTED FOR CABLE LENGTH 50MM TO 100MM. PLEASE SPECIFY THE FIXED ORIENTATIONS FROM THE ORDER CODE (F1, F2, ETC)
3. CONTACT GCT IF THE ORIENTATION YOU REQUIRE IS NOT SHOWN.
4. WORKING FREQUENCY RANGE: DC-6GHz
5. OPERATING TEMPERATURE: -40°C TO +85°C.
6. IMPEDANCE: 50 OHM.

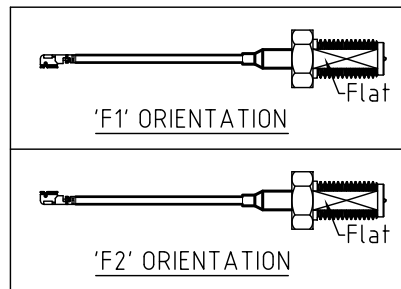
USAGE PRECAUTIONS: CABLES USING 'MICRO' COAX ARE DELICATE:

- (i) HANDLE WITH CARE.
- (ii) DO NOT TWIST; APPLY EXCESSIVE FORCES OR SHARP BENDS TO THE CABLE. DO NOT FORCEFULLY DEFORM WIRES.
- (iii) CONSULT CONNECTOR MANUFACTURER'S DATASHEETS FOR DETAILED NOTES ON HANDLING INSTRUCTIONS.



HOW TO ORDER

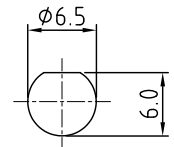
CAB550RF - X X X X - X X - X - 1






"L" LENGTH IN MM
eg: 100MM = 0100
(MIN.0050-MAX.0400
STANDARD = 0100, 0150, 0200)
Tolerance : 50mm : ± 2 mm.
51-200mm: ± 5 mm.
201-400mm: ± 7 mm.

WASHER AND NUT OPTIONS:
 BLANK = SEPARATELY PACKED (STANDARD)
 A = ASSEMBLED WITH CONNECTOR

ORIENTATION OPTIONS:
 BLANK = DOES NOT HAVE A FIXED ORIENTATION
 F1 = IPEX CONNECTION DOWN (L=50-200MM)
 F2 = IPEX CONNECTION UP (L=50-200MM)
 (SEE NOTES 1, 2, 3 AND DIAGRAMS FOR MORE INFORMATION)



RECOMMENDED SMA MOUNTING HOLE

Scale: NTS		Unframed X .XX .XXX ANGLES	Tolerances: ±0.2 ±0.1 ±0.05 ±1°	Material SEE NOTE	 	Drawing Number:	
Drawn: CC						CAB550RF	
App'd: XXX	Title CABLE ASSEMBLY			NOT TO SCALE	www.gct.co www.gradconn.com	Sheet 1	of 1
Date: 22 Feb. '25	Revision: 1.3			Unit: mm	© THIS DRAWING IS CONFIDENTIAL AND MUST NOT BE REPRODUCED OR DISCLOSED WITHOUT WRITTEN CONSENT	Drawing ©	E and O E