

CAB530RF: I-PEX MHF 4L + SMA STRAIGHT BULKHEAD JACK WITH O-RING RATED TO IP67/68 + Ø1.37MM LOW LOSS CABLE, 8GHz

## SPECIFICATIONS :

1. I-PEX MHF4L PLUG, P/N: 20632-001R-37.
2. Ø1.37MM LOW LOSS COAXIAL CABLE, COLOR: BLACK.
3. SMA STRAIGHT BULKHEAD JACK WITH O-RING RATED TO IP67/68, P/N: RFCT-SMA108-F37.

## ENVIRONMENTAL:

A. BULKHEAD MOUNTED CONNECTOR (RFCT-SMA108-F37)  
RATED TO THE FOLLOWING SPECIFICATION:

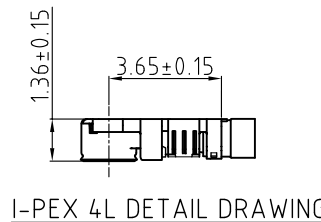
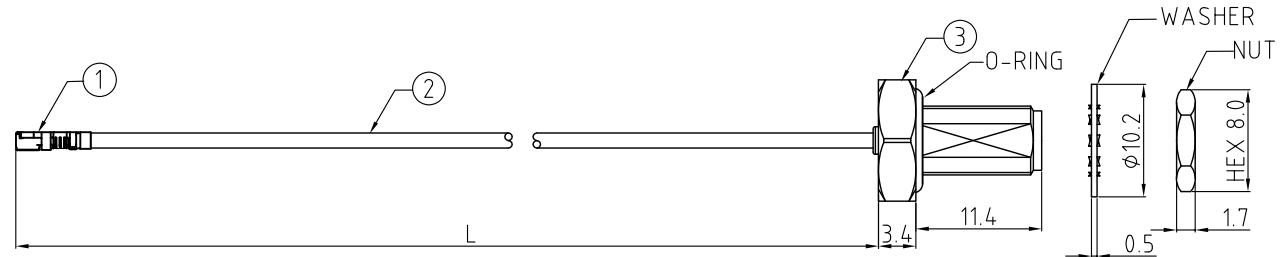
- i. IP6X - DUST TIGHT - NO PARTICLE INGRESS.
- ii. IPX7 WATERPROOF FOR 30 MINUTES UP TO 1 METER UNDERWATER.
- iii. IPX8 WATERPROOF FOR 48 HOURS AT 1 METER UNDERWATER.

## NOTES:

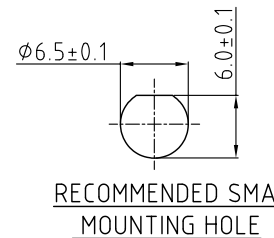
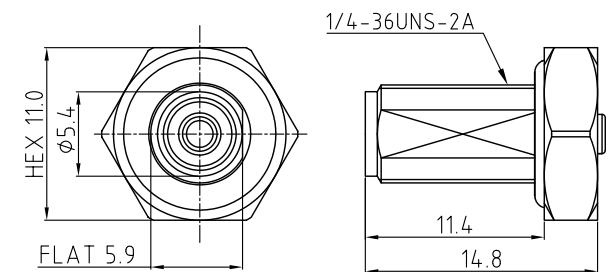
1. WORKING FREQUENCY RANGE: DC-8GHz.
2. OPERATING TEMPERATURE: -40°C TO +85°C.
3. IMPEDANCE: 50 Ohm.

## USAGE PRECAUTIONS: CABLES USING 'MICRO' COAX ARE DELICATE:

- (i) HANDLE WITH CARE.
- (ii) DO NOT TWIST; APPLY EXCESSIVE FORCES OR SHARP BENDS TO THE CABLE. DO NOT FORCEFULLY DEFORM WIRES.
- (iii) CONSULT CONNECTOR MANUFACTURER'S DATASHEETS FOR DETAILED NOTES ON HANDLING INSTRUCTIONS.



I-PEX 4L DETAIL DRAWING

RECOMMENDED SMA  
MOUNTING HOLE

SMA JACK DETAIL DRAWING

## HOW TO ORDER

CAB530RF - X X X X - X X - X - 1

"L" LENGTH IN MM  
eg: 100MM = 0100  
(MIN. 0050-MAX.0400)  
STANDARD = 0100, 0150, 0200  
Tolerance: 50-200mm: ±5mm.  
201-400mm: ±7mm.

WASHER AND NUT OPTIONS:  
BLANK = SEPERATELY PACKED (STANDARD)  
A = ASSEMBLED WITH CONNECTOR

## ORIENTATION OPTIONS:

BLANK = DOES NOT HAVE A FIXED ORIENTATION

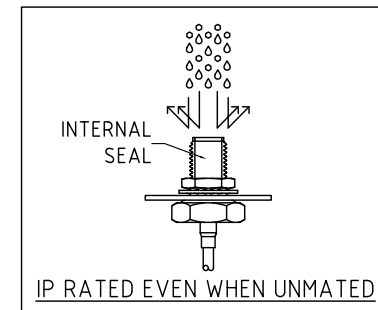
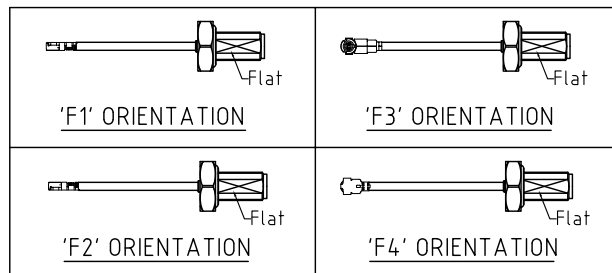
F1 = MHF CONNECTION DOWN (L=50-200MM)

F2 = MHF CONNECTION UP (L=50-200MM)

F3 = MHF CONNECTION AND D FLAT SAME ORIENTATION (L=50-200MM)

F4 = MHF CONNECTION AND D FLAT OPPOSITE ORIENTATION (L=50-200MM)

(SEE NOTES 1, 2, 3 AND DIAGRAMS FOR MORE INFORMATION)



IP RATED EVEN WHEN UNMATED

REV. DATE & DRN  
10 30/09/22 - NTV RELEASE  
11 22/05/23 - NTV  
12 03/02/24 - CC  
13 22/02/25 - CC  
Add GCT logo

Scale: NTS	THIRD ANGLE	Unstated .X .XX .XXX ANGLES	Tolerances: N/A N/A N/A N/A
Drawn: CC			
App'd: XXX	Title CABLE ASSEMBLY		
Date: 22 Feb. '25	Revision: 1.3	Unit: mm	

IP Rated  
RF Products

www.gct.co

www.gradconn.com

Drawing Number:

CAB530RF

Sheet 1 of 1

Drawing © E and O E

© THIS DRAWING IS CONFIDENTIAL AND MUST NOT BE COPIED OR DISCLOSED WITHOUT WRITTEN CONSENT