

COAXIAL CABLE ASSEMBLY

CUSTOMER PRODUCT SPECIFICATION SHEET

RoHS
Compliant

CAB495RF: RF CABLE ASSEMBLY, SMA R/A PLUG + SMA STRAIGHT BULKHEAD JACK WITH O-RING RATED TO IP67/68 + RG178 CABLE, 6GHz

SPECIFICATIONS :

1. SMA RIGHT ANGLE PLUG, GOLD PLATED. P/N: RFCT-SMA025-M78.
2. RG178 COAXIAL CABLE, COLOR: BROWN.
3. SMA STRAIGHT BULKHEAD JACK WITH O-RING RATED TO IP67/68, P/N: RFCT-SMA069-F78.

1. SMA RIGHT ANGLE PLUG, GOLD PLATED. P/N: RFCT-SMA025-M78.
2. RG178 COAXIAL CABLE, COLOR: BROWN.
3. SMA STRAIGHT BULKHEAD JACK WITH O-RING RATED TO IP67/68, P/N: RFCT-SMA069-F78.

ENVIRONMENTAL:

A. BULKHEAD MOUNTED CONNECTOR (RFCT-SMA069-F78) RATED TO THE FOLLOWING SPECIFICATION:

- i. IP6X - DUST TIGHT - NO PARTICLE INGRESS.
- ii. IPX7 WATERPROOF FOR 30 MINUTES UP TO 1 METER UNDERWATER.
- iii. IPX8 WATERPROOF FOR 48 HOURS AT 1 METER UNDERWATER.
- iv. IPX8 WATERPROOF FOR 12 HOURS AT 5 METERS UNDERWATER.
- v. PRESSURE TEST - 1 BAR FOR 10 SECONDS.

- A. BULKHEAD MOUNTED CONNECTOR (RFCT-SMA069-F78) RATED TO THE FOLLOWING SPECIFICATION:
- i. IP6X - DUST TIGHT - NO PARTICLE INGRESS.
 - ii. IPX7 WATERPROOF FOR 30 MINUTES UP TO 1 METER UNDERWATER.
 - iii. IPX8 WATERPROOF FOR 48 HOURS AT 1 METER UNDERWATER.
 - iv. IPX8 WATERPROOF FOR 12 HOURS AT 5 METERS UNDERWATER.
 - v. PRESSURE TEST - 1 BAR FOR 10 SECONDS.

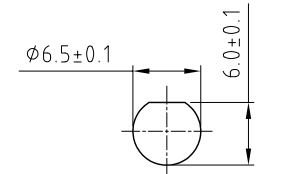
NOTES:

1. THE ORIENTATION OF CONNECTORS ON DRAWING IS FOR REFERENCE ONLY, IF THE ORDER IS LEFT BLANK THE CONNECTOR WILL NOT HAVE FIXED ORIENTATION.
2. FIXED ORIENTATION IS SUGGESTED FOR CABLE LENGTH 50MM TO 100MM. PLEASE SPECIFY THE FIXED ORIENTATIONS FROM THE ORDER CODE (F1, F2 ETC)
3. CONTACT GCT IF THE ORIENTATION YOU REQUIRE IS NOT SHOWN.
4. WORKING FREQUENCY RANGE: DC-6GHz.
5. OPERATING TEMPERATURE: -40°C TO +125°C.
6. IMPEDANCE: 50 OHM.

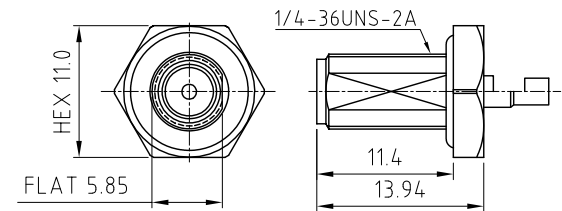
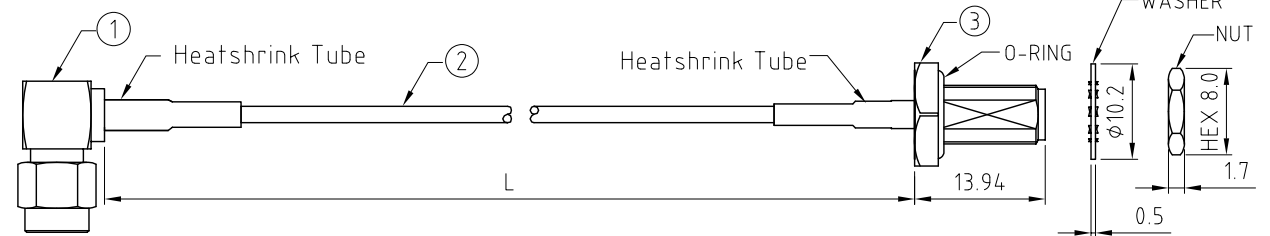
1. THE ORIENTATION OF CONNECTORS ON DRAWING IS FOR REFERENCE ONLY, IF THE ORDER IS LEFT BLANK THE CONNECTOR WILL NOT HAVE FIXED ORIENTATION.
2. FIXED ORIENTATION IS SUGGESTED FOR CABLE LENGTH 50MM TO 100MM. PLEASE SPECIFY THE FIXED ORIENTATIONS FROM THE ORDER CODE (F1, F2 ETC)
3. CONTACT GCT IF THE ORIENTATION YOU REQUIRE IS NOT SHOWN.
4. WORKING FREQUENCY RANGE: DC-6GHz.
5. OPERATING TEMPERATURE: -40°C TO +125°C.
6. IMPEDANCE: 50 OHM.

<p><u>USAGE PRECAUTIONS: CABLES USING 'MICRO' COAX ARE DELICATE:</u></p> <p>(i) HANDLE WITH CARE.</p> <p>(ii) DO NOT TWIST; APPLY EXCESSIVE FORCES OR SHARP BENDS TO THE CABLE. DO NOT FORCEFULLY DEFORM WIRES.</p> <p>(iii) CONSULT CONNECTOR MANUFACTURER'S DATASHEETS FOR DETAILED NOTES ON HANDLING INSTRUCTIONS.</p>

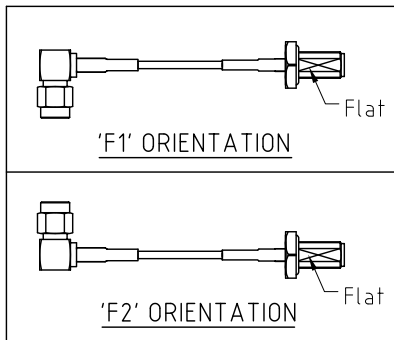
- | |
|---|
| (i) HANDLE WITH CARE.
(ii) DO NOT TWIST; APPLY EXCESSIVE FORCES OR SHARP BENDS TO THE CABLE. DO NOT FORCEFULLY DEFORM WIRES.
(iii) CONSULT CONNECTOR MANUFACTURER'S DATASHEETS FOR DETAILED NOTES ON HANDLING INSTRUCTIONS. |
|---|



RECOMMENDED SMA
MOUNTING HOLE



SMA JACK DETAIL DRAWING



CAB495RF - X X X X- X X - X - 1

"L" LENGTH IN MM:
eg: 100MM = 0100
(MIN. 0050-MAX.2000
STANDARD = 0100, 0150, 0200)
Tolerance: 50mm: ± 2 mm.
51-200mm: ± 5 mm.
201-500mm: ± 7 mm.
501-999mm: ± 10 mm.
>1000mm: $\pm (L \times 0.02)$ mm.

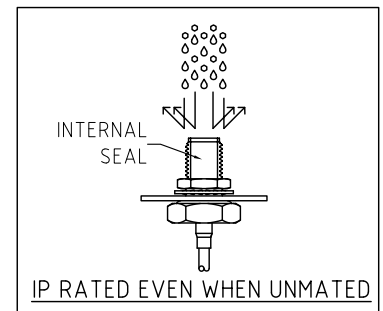
eg: 100MM = 0100
(MIN. 0050-MAX.2000
STANDARD = 0100, 0150, 0200)
Tolerance: 50mm: ± 2 mm.
51-200mm: ± 5 mm.
201-500mm: ± 7 mm.
501-999mm: ± 10 mm.
>1000mm: $\pm (L \times 0.02)$ mm.




BLANK = SEPARATELY PACKED (STANDARD)
A = ALL ASSEMBLED WITH CONNECTOR

BLANK = SEPARATELY PACKED (STANDARD)
A = ALL ASSEMBLED WITH CONNECTOR

ORIENTATION OPTIONS:
BLANK = DOES NOT HAVE A FIXED ORIENTATION
F1 = SMA PLUG CONNECTION DOWN (L=50-200MM)
F2 = SMA PLUG CONNECTION UP (L=50-200MM)
(SEE NOTES 1, 2, 3 AND DIAGRAMS FOR MORE INFORMATION)

BLANK = DOES NOT HAVE A FIXED ORIENTATION
F1 = SMA PLUG CONNECTION DOWN (L=50-200MM)
F2 = SMA PLUG CONNECTION UP (L=50-200MM)
(SEE NOTES 1, 2, 3 AND DIAGRAMS FOR MORE INFORMATION)



<div>REV. DATE & DRN</div> <div>10.29/02/21 - NYW RELEASE</div> <div>11.25/07/22 - NYW ANEAD TYPD.</div> <div>12.03/02/24 - CC</div> <div>ADD IP RATING VIEW</div> <div>13.03/02/25 - CC</div> <div>Change operating temp. from -55°C to -40°C.</div> <div>Add GCT logo.</div>	<div>Scale: NTS</div> <div>Drawn: CC</div> <div>App'd: XXX</div> <div>Date: 13 FEB. '25</div>	<div>THIRD ANGLE</div> <div></div> <div>Title CABLE ASSEMBLY</div> <div>Revision: 1.3</div>	<div>Unstated Tolerances:</div> <div>.X ±0.2</div> <div>.XX ±0.2</div> <div>.XXX ±0.2</div> <div>ANGLES N/A</div> <div>Unit: mm</div>	<div>IP Rated RF Products</div> <div> </div> <div>www.gct.co www.gradconn.com</div> <div><div>© THIS DRAWING IS CONFIDENTIAL AND MUST NOT BE COPIED OR DISCLOSED WITHOUT WRITTEN CONSENT</div></div>	<div>Drawing Number:</div> <div>CAB495RF</div> <div>Sheet 1 of 1</div> <div>Drawing © E and O E</div>
	<div>© THIS DRAWING IS CONFIDENTIAL AND MUST NOT BE COPIED OR DISCLOSED WITHOUT WRITTEN CONSENT</div>				