

CAB458RF: I-PEX MHF I PLUG + FRONT MOUNT SMA S/T BULKHEAD JACK WITH O-RING RATED TO IP67/68 + MULTIPLE CABLE, 6GHz

## SPECIFICATIONS :

1. I-PEX MHF I PLUG, P/N:  
FOR 1.37MM CABLE: 20351-112R-37.  
FOR RG178 CABLE: 20278-112R-18
- 2.COAXIAL CABLE, SEE P/N OPTIONS.
3. FRONT MOUNT SMA STRAIGHT BULKHEAD JACK WITH O-RING RATED TO IP67/68, P/N: RFCT-SMA087-F78.

## ENVIRONMENTAL:

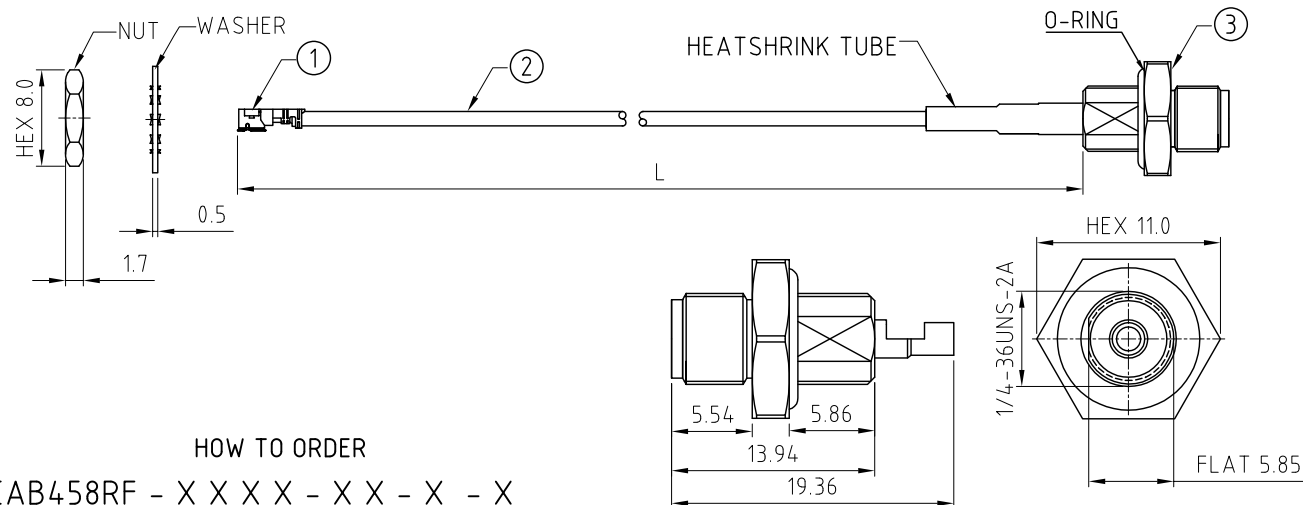
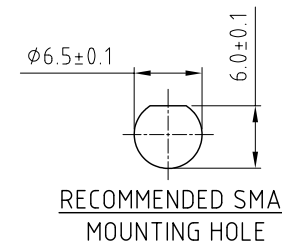
- A. BULKHEAD MOUNTED CONNECTOR (RFCT-SMA087-F78) RATED TO THE FOLLOWING SPECIFICATION:
- i. IP6X - DUST TIGHT - NO PARTICLE INGRESS.
  - ii. IPX7 WATERPROOF FOR 30 MINUTES UP TO 1 METER UNDERWATER.
  - iii. IPX8 WATERPROOF FOR 48 HOURS AT 1 METER UNDERWATER.

## NOTES:

1. THE ORIENTATION OF CONNECTORS ON DRAWING IS FOR REFERENCE ONLY, IF THE ORDER IS LEFT BLANK THE CONNECTOR WILL NOT HAVE FIXED ORIENTATION.
2. FIXED ORIENTATION IS SUGGESTED FOR CABLE LENGTH 25MM TO 100MM. PLEASE SPECIFY THE FIXED ORIENTATIONS FROM THE ORDER CODE (F1, F2, ETC)
3. CONTACT GCT IF THE ORIENTATION YOU REQUIRE IS NOT SHOWN.
4. WORKING FREQUENCY RANGE: DC-6GHz.
5. OPERATING TEMPERATURE: -40°C~+85°C.
6. IMPEDANCE: 50 OHM.
7. IT IS INTENDED THAT MOUNTING OF THIS CONNECTOR IS ACHIEVED USING THE NUT AND WASHER PROVIDED. PLEASE CONTACT GCT FOR ADVISE IF PLANNING TO USE A DIFFERENT METHOD OF MOUNTING.

## USAGE PRECAUTIONS: CABLES USING 'MICRO' COAX ARE DELICATE:

- (i) HANDLE WITH CARE.
- (ii) DO NOT TWIST; APPLY EXCESSIVE FORCES OR SHARP BENDS TO THE CABLE. DO NOT FORCEFULLY DEFORM WIRES.
- (iii) CONSULT CONNECTOR MANUFACTURER'S DATASHEETS FOR DETAILED NOTES ON HANDLING INSTRUCTIONS.



## HOW TO ORDER

CAB458RF - X X X X - X X - X - X

"L" LENGTH IN MM:  
eg: 100MM = 0100  
(MIN. 0050-MAX.0400  
STANDARD = 0100, 0150, 0200)  
Tolerance: 50-200mm: ±5mm.  
201-400mm: ±7mm.

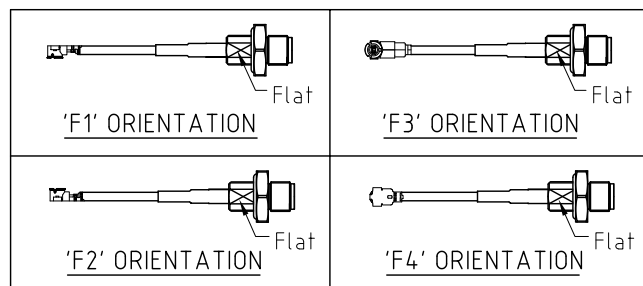
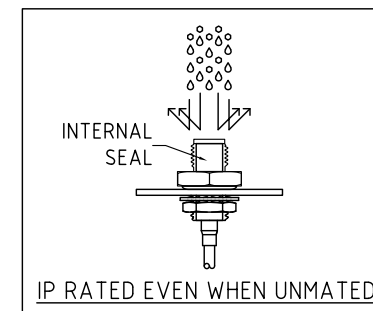
CABLE SIZE OPTION:  
1 = Ø1.37MM CABLE, COLOR: BLACK  
2 = RG178 CABLE, COLOR: BROWN

WASHER AND NUT OPTIONS:  
BLANK = SEPARATELY PACKED (STANDARD)  
A = ALL ASSEMBLED WITH CONNECTOR

## ORIENTATION OPTIONS:

BLANK = DOES NOT HAVE A FIXED ORIENTATION  
F1 = MHF CONNECTION DOWN (L=50-200MM)  
F2 = MHF CONNECTION UP (L=50-200MM)  
F3 = MHF CONNECTION AND D FLAT SAME ORIENTATION (L=50-200MM)  
F4 = MHF CONNECTION AND D FLAT OPPOSITE ORIENTATION (L=50-200MM)  
(SEE NOTES 1, 2, 3 AND DIAGRAMS FOR MORE INFORMATION)

## SMA DETAIL DRAWING



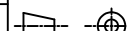
Scale: NTS

Drawn: CC

App'd: XXX

Date: 16 FEB. '25

THIRD ANGLE



Title CABLE ASSEMBLY

Revision: 1.3

Unstated  
.X  
.XX  
.XXX  
ANGLES

Tolerances:

Unit: mm

IP Rated  
RF Products

www.gct.co

www.gradconn.com

Drawing Number:

CAB458RF

Sheet 1 of 1

Drawing © E and O E

© THIS DRAWING IS CONFIDENTIAL AND MUST NOT BE COPIED OR DISCLOSED WITHOUT WRITTEN CONSENT