

CAB443RF: I-PEX I MHF + ISOLATED RP SMA STRAIGHT BULKHEAD JACK WITH O-RING RATED TO IP67 + RG178 CABLE, 6GHz

**SPECIFICATIONS :**

1. I-PEX MHF I PLUG, P/N: 20278-112R-18.
2. RG178 COAXIAL CABLE, COLOR: BROWN.
3. ISOLATED RP SMA STRAIGHT BULKHEAD JACK WITH O-RING RATED TO IP67, NICKEL PLATED. P/N: RFCT-SMA086-F78.

## ENVIRONMENTAL:

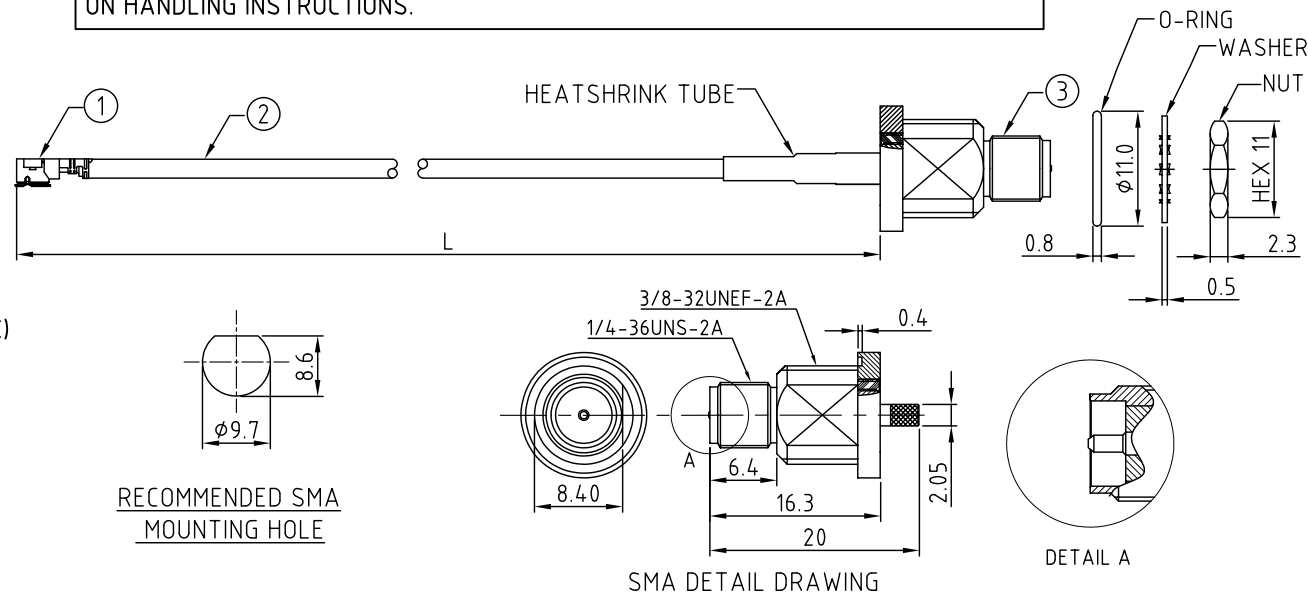
- A. BULKHEAD MOUNTED CONNECTOR (RFCT-SMA086-F78) RATED TO THE FOLLOWING SPECIFICATION:
- i. IP6X - DUST TIGHT - NO PARTICLE INGRESS.
  - ii. IPX7 WATERPROOF FOR 30 MINUTES UP TO 1 METER UNDERWATER.

NOTES:

1. THE ORIENTATION OF CONNECTORS ON DRAWING IS FOR REFERENCE ONLY, IF THE ORDER IS LEFT BLANK THE CONNECTOR WILL NOT HAVE FIXED ORIENTATION.
2. FIXED ORIENTATION IS SUGGESTED FOR CABLE LENGTH 25MM TO 100MM. PLEASE SPECIFY THE FIXED ORIENTATIONS FROM THE ORDER CODE (F1, F2, ETC)
3. CONTACT GCT IF THE ORIENTATION YOU REQUIRE IS NOT SHOWN.
4. WORKING FREQUENCY RANGE: DC-6GHz.
5. OPERATING TEMPERATURE: -40°C TO +80°C.
6. IMPEDANCE: 50 Ohm.
7. CARE SHOULD BE TAKEN NOT TO OVERTIGHTEN THE MATING CONNECTOR. OVERTIGHTENING RISKS COMPROMISING THE IP RATING OF THE CONNECTOR.

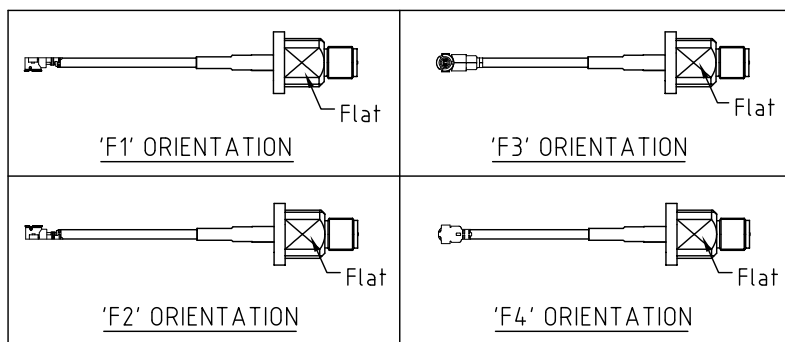
USAGE PRECAUTIONS: CABLES USING 'MICRO' COAX ARE DELICATE:

- (i) HANDLE WITH CARE.
- (ii) DO NOT TWIST; APPLY EXCESSIVE FORCES OR SHARP BENDS TO THE CABLE. DO NOT FORCEFULLY DEFORM WIRES.
- (iii) CONSULT CONNECTOR MANUFACTURER'S DATASHEETS FOR DETAILED NOTES ON HANDLING INSTRUCTIONS.



## HOW TO ORDER

CAB443RF - X X X X - X X - X - 1

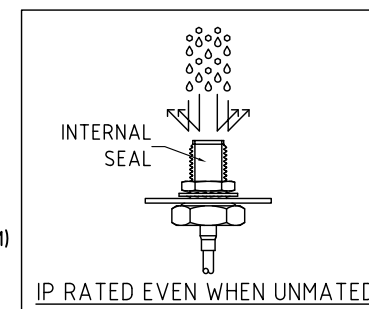


"L" LENGTH IN MM:  
eg: 100MM = 0100  
(MIN. 0025-MAX.0400  
STANDARD = 0100, 0150, 0200)  
Tolerance: <50mm: ±2mm  
50-200mm: ±5mm.  
201-400mm: ±7mm.


O-RING, WASHER AND NUT OPTIONS:  
 BLANK = SEPARATELY PACKED (STANDARD)  
 A = ASSEMBLED WITH CONNECTOR

ORIENTATION OPTIONS:

BLANK = DOES NOT HAVE A FIXED ORIENTATION  
F1 = MHF CONNECTION DOWN (L=25-200MM)  
F2 = MHF CONNECTION UP (L=25-200MM)  
F3 = MHF CONNECTION AND D FLAT SAME ORIENTATION (L=25-200MM)  
F4 = MHF CONNECTION AND D FLAT OPPOSITE ORIENTATION (L=25-200MM)  
(SEE NOTES 1, 2, 3 AND DIAGRAMS FOR MORE INFORMATION)



REV. DATE & DRN	10. 12/10/70 - NYW RELEASE
	11. 11/02/71 - NYW
	12. 03/07/72 - NYW
	13. 05/07/72 - NYW
	14. 07/07/72 - NYW
	15. 01/07/74 - CC
	16. 02/75 - CC
	17. 02/75 - CC
	18. 02/75 - CC
	19. 02/75 - CC
	20. 02/75 - CC
	21. 02/75 - CC
	22. 02/75 - CC
	23. 02/75 - CC
	24. 02/75 - CC
	25. 02/75 - CC
	26. 02/75 - CC
	27. 02/75 - CC
	28. 02/75 - CC
	29. 02/75 - CC
	30. 02/75 - CC
	31. 02/75 - CC
	32. 02/75 - CC
	33. 02/75 - CC
	34. 02/75 - CC
	35. 02/75 - CC
	36. 02/75 - CC
	37. 02/75 - CC
	38. 02/75 - CC
	39. 02/75 - CC
	40. 02/75 - CC
	41. 02/75 - CC
	42. 02/75 - CC
	43. 02/75 - CC
	44. 02/75 - CC
	45. 02/75 - CC
	46. 02/75 - CC
	47. 02/75 - CC
	48. 02/75 - CC
	49. 02/75 - CC
	50. 02/75 - CC
	51. 02/75 - CC
	52. 02/75 - CC
	53. 02/75 - CC
	54. 02/75 - CC
	55. 02/75 - CC
	56. 02/75 - CC
	57. 02/75 - CC
	58. 02/75 - CC
	59. 02/75 - CC
	60. 02/75 - CC
	61. 02/75 - CC
	62. 02/75 - CC
	63. 02/75 - CC
	64. 02/75 - CC
	65. 02/75 - CC
	66. 02/75 - CC
	67. 02/75 - CC
	68. 02/75 - CC
	69. 02/75 - CC
	70. 02/75 - CC
	71. 02/75 - CC
	72. 02/75 - CC
	73. 02/75 - CC
	74. 02/75 - CC
	75. 02/75 - CC
	76. 02/75 - CC
	77. 02/75 - CC
	78. 02/75 - CC
	79. 02/75 - CC
	80. 02/75 - CC
	81. 02/75 - CC
	82. 02/75 - CC
	83. 02/75 - CC
	84. 02/75 - CC
	85. 02/75 - CC
	86. 02/75 - CC
	87. 02/75 - CC
	88. 02/75 - CC
	89. 02/75 - CC
	90. 02/75 - CC
	91. 02/75 - CC
	92. 02/75 - CC
	93. 02/75 - CC
	94. 02/75 - CC
	95. 02/75 - CC
	96. 02/75 - CC
	97. 02/75 - CC
	98. 02/75 - CC
	99. 02/75 - CC
	100. 02/75 - CC

Scale: NTS	THIRD ANGLE	Unstated X XX XXX ANGLES	Tolerances: N/A N/A N/A N/A
Drawn: CC			
App'd: XXX	Title CABLE ASSEMBLY		
Date: 16 FEB. '25	Revision: 1.6	Unit: mm	

IP Rated RF Products	 	Drawing Number: CAB443RF	
		Sheet 1	of 1
© THIS DRAWING IS CONFIDENTIAL AND MUST NOT BE COPIED OR DISCLOSED WITHOUT WRITTEN CONSENT		Drawing ©	E and O E