

## CABLE 378 RF: I-PEX MHF 4L TO 1.13 CABLE TO RP SMA S/T BULKHEAD JACK WITH O-RING (IP67/68), 6GHz

## SPECIFICATIONS:

1. I-PEX MHF 4L PLUG, P/N: 20565-001R-13
2. 1.13MM COAXIAL CABLE, COLOR: BLACK
3. SMA STRAIGHT BULKHEAD JACK WITH O-RING RATED TO IP67/68, P/N: RFCT-SMA071-F78.

## ENVIRONMENTAL:

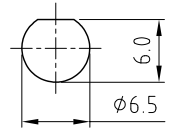
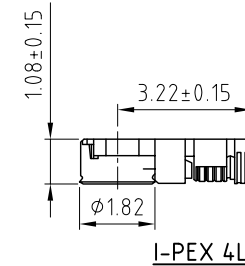
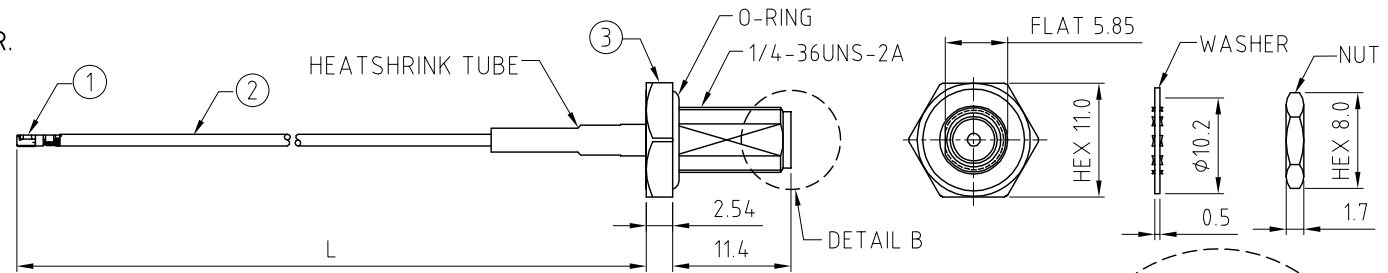
- A. BULKHEAD MOUNTED CONNECTOR (RFCT-SMA071-F78) RATED TO THE FOLLOWING SPECIFICATION:
- i. IP6X - DUST TIGHT - NO PARTICLE INGRESS.
  - ii. IPX7 WATERPROOF FOR 30 MINUTES UP TO 1 METER UNDERWATER.
  - iii. IPX8 WATERPROOF FOR 48 HOURS AT 1 METER UNDERWATER.

## NOTES:

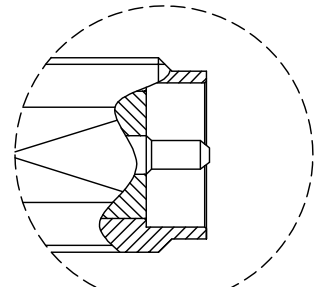
1. THE ORIENTATION OF CONNECTORS ON DRAWING IS FOR REFERENCE ONLY, IF THE ORDER IS LEFT BLANK THE CONNECTOR WILL NOT HAVE FIXED ORIENTATION.
2. FIXED ORIENTATION IS SUGGESTED FOR CABLE LENGTH 50MM TO 100MM. PLEASE SPECIFY THE FIXED ORIENTATIONS FROM THE ORDER CODE (F1, F2, ETC)
3. CONTACT GCT IF THE ORIENTATION YOU REQUIRE IS NOT SHOWN.
4. WORKING FREQUENCY RANGE: DC-6GHz.
5. OPERATING TEMPERATURE: -40°C~+85°C.
6. IMPEDANCE: 50 Ohm.

## USAGE PRECAUTIONS: CABLES USING 'MICRO' COAX ARE DELICATE:

- (i) HANDLE WITH CARE.
- (ii) DO NOT TWIST; APPLY EXCESSIVE FORCES OR SHARP BENDS TO THE CABLE. DO NOT FORCEFULLY DEFORM WIRES.
- (iii) CONSULT CONNECTOR MANUFACTURER'S DATASHEETS FOR DETAILED NOTES ON HANDLING INSTRUCTIONS.

RECOMMENDED SMA  
MOUNTING HOLE

I-PEX 4L

DETAIL B  
SCALE 3:1

## HOW TO ORDER

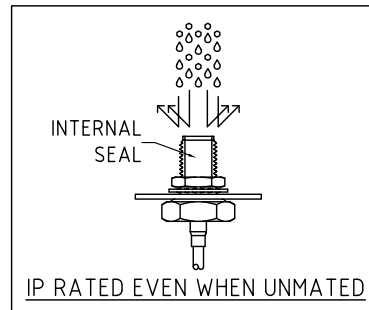
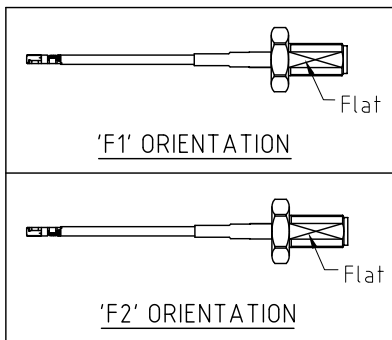
CABLE 378 RF - X X X - X X - X - 1

"L" LENGTH IN MM:  
eg: 100MM = 100  
(MIN. 050-MAX.400)  
STANDARD = 100, 150, 200)  
Tolerance: 50-200mm: ±5mm.  
201-400mm: ±7mm.

CABLE SIZE:  
1 = Ø1.13MM CABLE, COLOR: BLACK

WASHER AND NUT OPTIONS:  
BLANK = SEPARATELY PACKED (STANDARD)  
A = ASSEMBLED WITH CONNECTOR

ORIENTATION OPTIONS:  
BLANK = DOES NOT HAVE A FIXED ORIENTATION  
F1 = MHF CONNECTION DOWN (L=50-200MM)  
F2 = MHF CONNECTION UP (L=50-200MM)  
(SEE NOTES 1, 2, 3 AND DIAGRAMS FOR MORE INFORMATION)



REV.	DATE & DRN
10	19/02/20 - CC RELEASE
11	20/06/20 - NYW
12	24/07/20 - NYW
13	24/07/20 - NYW
14	22/02/25 - CC
15	22/02/25 - CC
16	22/02/25 - CC
17	22/02/25 - CC
18	22/02/25 - CC
19	22/02/25 - CC
20	22/02/25 - CC
21	22/02/25 - CC
22	22/02/25 - CC
23	22/02/25 - CC
24	22/02/25 - CC
25	22/02/25 - CC
26	22/02/25 - CC
27	22/02/25 - CC
28	22/02/25 - CC
29	22/02/25 - CC
30	22/02/25 - CC
31	22/02/25 - CC
32	22/02/25 - CC
33	22/02/25 - CC
34	22/02/25 - CC
35	22/02/25 - CC
36	22/02/25 - CC
37	22/02/25 - CC
38	22/02/25 - CC
39	22/02/25 - CC
40	22/02/25 - CC
41	22/02/25 - CC
42	22/02/25 - CC
43	22/02/25 - CC
44	22/02/25 - CC
45	22/02/25 - CC
46	22/02/25 - CC
47	22/02/25 - CC
48	22/02/25 - CC
49	22/02/25 - CC
50	22/02/25 - CC
51	22/02/25 - CC
52	22/02/25 - CC
53	22/02/25 - CC
54	22/02/25 - CC
55	22/02/25 - CC
56	22/02/25 - CC
57	22/02/25 - CC
58	22/02/25 - CC
59	22/02/25 - CC
60	22/02/25 - CC
61	22/02/25 - CC
62	22/02/25 - CC
63	22/02/25 - CC
64	22/02/25 - CC
65	22/02/25 - CC
66	22/02/25 - CC
67	22/02/25 - CC
68	22/02/25 - CC
69	22/02/25 - CC
70	22/02/25 - CC
71	22/02/25 - CC
72	22/02/25 - CC
73	22/02/25 - CC
74	22/02/25 - CC
75	22/02/25 - CC
76	22/02/25 - CC
77	22/02/25 - CC
78	22/02/25 - CC
79	22/02/25 - CC
80	22/02/25 - CC
81	22/02/25 - CC
82	22/02/25 - CC
83	22/02/25 - CC
84	22/02/25 - CC
85	22/02/25 - CC
86	22/02/25 - CC
87	22/02/25 - CC
88	22/02/25 - CC
89	22/02/25 - CC
90	22/02/25 - CC
91	22/02/25 - CC
92	22/02/25 - CC
93	22/02/25 - CC
94	22/02/25 - CC
95	22/02/25 - CC
96	22/02/25 - CC
97	22/02/25 - CC
98	22/02/25 - CC
99	22/02/25 - CC
100	22/02/25 - CC

Scale: NTS	THIRD ANGLE	Unstated .X .XX .XXX ANGLES	Tolerances: N/A N/A N/A N/A
Drawn: CC			
App'd: XXX	Title CABLE ASSEMBLY		
Date: 22 Feb. '25	Revision: 1.4	Unit: mm	

IP Rated RF Products
© THIS DRAWING IS CONFIDENTIAL AND MUST NOT BE COPIED OR DISCLOSED WITHOUT WRITTEN CONSENT

www.gct.co	www.gradconn.com

Type: Cable 378 RF
CABLE 378 RF
Drawing Number:
Sheet 1 of 1
Drawing © E and O E