

CABLE 320 RF: RF CABLE ASSEMBLY, I-PEX MHF 1 LK PLUG + SMA STRAIGHT BULKHEAD JACK + MULTIPLE CABLE OPTIONS – 3GHz

SPECIFICATIONS:

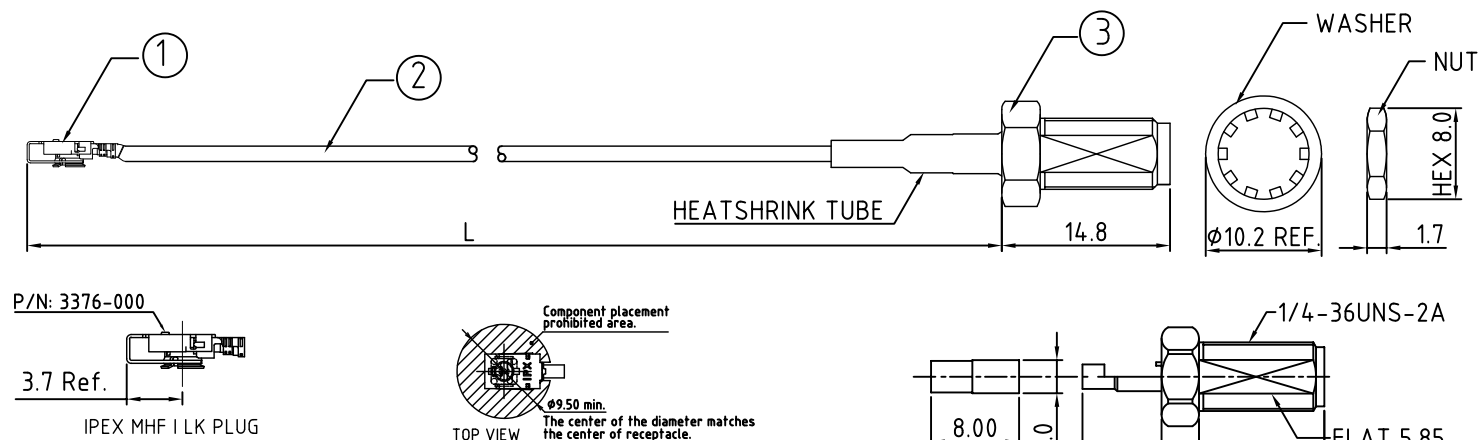
1. I-PEX MHF I LK PLUG, P/N:
Ø1.37MM CABLE: 20670-001R-37 + 3376-000
Ø1.13MM CABLE: 20670-001R-13 + 3376-000
RG178 CABLE: 20670-001R-18 + 3376-000
2. COAXIAL CABLE, SEE P/N OPTION FOR DETAIL.
3. SMA STRAIGHT BULKHEAD JACK, GOLD. P/N:
RFCT-SMA010-F78.

NOTES:

1. THE ORIENTATION OF CONNECTORS ON DRAWING IS FOR REFERENCE ONLY, IF THE ORDER IS LEFT BLANK THE CONNECTOR WILL NOT HAVE FIXED ORIENTATION.
2. FIXED ORIENTATION IS SUGGESTED FOR CABLE LENGTH 25MM TO 100MM. PLEASE SPECIFY THE FIXED ORIENTATIONS FROM THE ORDER CODE (F1, F2, ETC)
3. CONTACT GCT IF THE ORIENTATION YOU REQUIRE IS NOT SHOWN.
4. WORKING FREQUENCY RANGE: DC-3GHz.
5. OPERATING TEMPERATURE: -40°C TO +85°C.
6. IMPEDANCE: 50 OHM.

USAGE PRECAUTIONS: CABLES USING 'MICRO' COAX ARE DELICATE:

- (i) HANDLE WITH CARE.
- (ii) DO NOT TWIST; APPLY EXCESSIVE FORCES OR SHARP BENDS TO THE CABLE. DO NOT FORCEFULLY DEFORM WIRES.
- (iii) CONSULT CONNECTOR MANUFACTURER'S DATASHEETS FOR DETAILED NOTES ON HANDLING INSTRUCTIONS.



HOW TO ORDER
CABLE 320 RF - X X X - X X - X - X

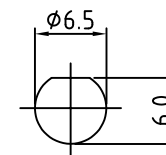
"L" LENGTH IN MM
eg: 100MM = 100
(MIN. = 025, MAX. = 400
STANDARD = 100, 150, 200)
Tolerance: <50mm : ±2mm.
51-200mm: ±5mm.
201-400mm: ±7mm.

CABLE SIZE OPTIONS:
 1 = Ø1.37MM CABLE, COLOR: BLACK
 2 = Ø1.13MM CABLE, COLOR: GRAY (NON-STANDARD)
 3 = RG178 CABLE, COLOR: BROWN (NON-STANDARD)

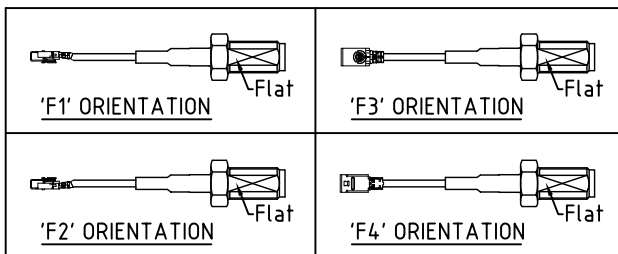
WASHER AND NUT OPTIONS:
 BLANK = SEPERATELY PACKED (STANDARD)
 A = ASSEMBLED WITH CONNECTOR


ORIENTATION OPTIONS:

BLANK = DOES NOT HAVE A FIXED ORIENTATION
F1 = MHF CONNECTION DOWN (L=25-200MM)
F2 = MHF CONNECTION UP (L=25-200MM)
F3 = MHF CONNECTION AND D FLAT SAME ORIENTATION (L=50-200MM)
F4 = MHF CONNECTION AND D FLAT OPPOSITE ORIENTATION (L=50-200MM)
(SEE NOTES 1, 2, 3 AND DIAGRAMS FOR MORE INFORMATION)



RECOMMENDED SMA MOUNTING HOLE



Scale: NTS		Unrated X	Tolerances: N/A	Material SEE NOTE
Drawn: KY		.XX .XXX ANGLES	N/A N/A N/A	
App'd: XXX	Title CABLE ASSEMBLY			NOT TO SCALE
Date: 16 FEB. '25	Revision:18			Unit: mm

 www.gct.co	 www.gradconn.com	Type: Cable 320 RF	
		CABLE 320 RF	
Drawing Number:		Sheet 1	of 1
 THIS DRAWING IS CONFIDENTIAL AND MUST NOT BE COPIED OR DISCLOSED WITHOUT WRITTEN CONSENT	Drawing		E and O E

GCT



THIS DRAWING IS CONFIDENTIAL AND MUST NOT BE COPIED OR DISCLOSED WITHOUT WRITTEN CONSENT

Type:	Cable 320 RF
-------	--------------

CABLE 320 RF

Drawing Number:

Sheet 1 of 1

Drawing (C)	E and O E
-------------	-----------