

## CABLE 395 RF: I-PEX MHF + RP SMA RIGHT ANGLE BULKHEAD JACK WITH O-RING RATED TO IP67/68 + MULTIPLE CABLE SIZES, 6GHz

## SPECIFICATIONS :

1. I-PEX MHF PLUG, P/N: FOR RG178 CABLE: 20278-112R-18, FOR  $\phi 1.13\text{MM}$  CABLE: 20278-112R-13, FOR  $\phi 1.37\text{MM}$  CABLE: 20351-112R-37.
2. COAXIAL CABLE, SEE P/N OPTION FOR DETAIL.
3. RP SMA RIGHT ANGLE BULKHEAD JACK WITH O-RING RATED TO IP67/68, GOLD PLATED, P/N:  
FOR RG178 CABLE: RFCT-SMA077-F78.  
FOR  $\phi 1.13\text{MM}$  CABLE: RFCT-SMA078-F13.  
FOR  $\phi 1.37\text{MM}$  CABLE: RFCT-SMA078-F37.

## ENVIRONMENTAL:

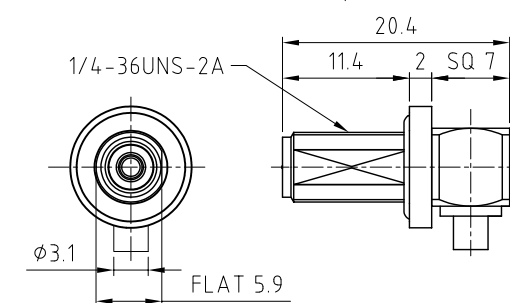
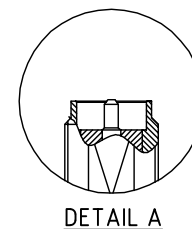
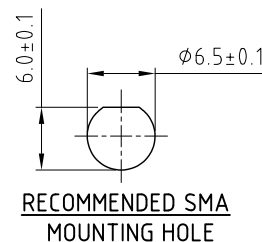
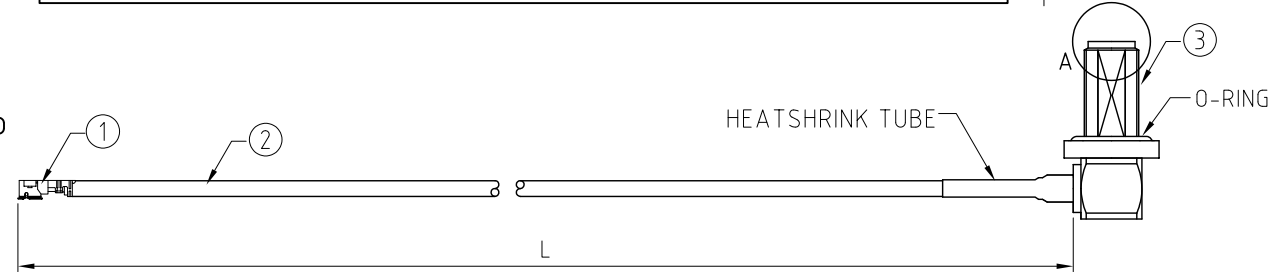
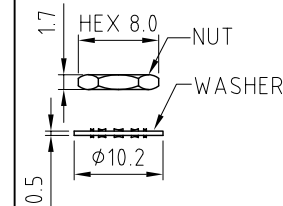
- A. BULKHEAD MOUNTED CONNECTOR (RFCT-SMA077-F78/ RFCT-SMA078-F13) RATED TO THE FOLLOWING SPECIFICATION:
- i. IP6X - DUST TIGHT - NO PARTICLE INGRESS.
  - ii. IPX7 WATERPROOF FOR 30 MINUTES UP TO 1 METER UNDERWATER.
  - iii. IPX8 WATERPROOF FOR 48 HOURS AT 1 METER UNDERWATER.

## NOTES:

1. THE ORIENTATION OF CONNECTORS ON DRAWING IS FOR REFERENCE ONLY, IF THE ORDER IS LEFT BLANK THE CONNECTOR WILL NOT HAVE FIXED ORIENTATION.
2. FIXED ORIENTATION IS SUGGESTED FOR CABLE LENGTH 50MM TO 100MM. PLEASE SPECIFY THE FIXED ORIENTATIONS FROM THE ORDER CODE (F1, F2, ETC)
3. CONTACT GCT IF THE ORIENTATION YOU REQUIRE IS NOT SHOWN.
4. WORKING FREQUENCY RANGE: DC-6GHz.
5. OPERATING TEMPERATURE:  $-40^{\circ}\text{C}$  TO  $+85^{\circ}\text{C}$
6. IMPEDANCE: 50 OHM.

## USAGE PRECAUTIONS: CABLES USING 'MICRO' COAX ARE DELICATE:

- (i) HANDLE WITH CARE.
- (ii) DO NOT TWIST; APPLY EXCESSIVE FORCES OR SHARP BENDS TO THE CABLE. DO NOT FORCEFULLY DEFORM WIRES.
- (iii) CONSULT CONNECTOR MANUFACTURER'S DATASHEETS FOR DETAILED NOTES ON HANDLING INSTRUCTIONS.



## HOW TO ORDER

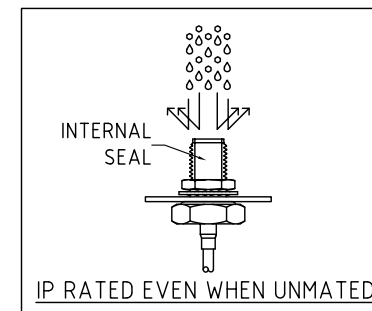
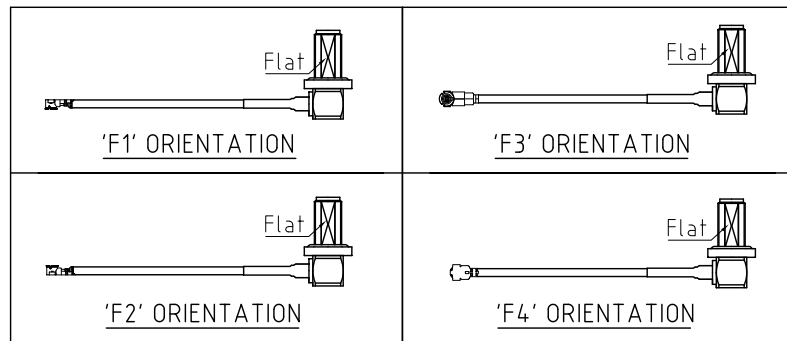
CABLE 395 RF - X X X - X X - X - X

"L" LENGTH IN MM:  
eg: 100MM = 100  
(MIN. 050-MAX.400)  
STANDARD = 100, 150, 200)  
Tolerance: 50-200mm:  $\pm 5\text{mm}$ .  
201-400mm:  $\pm 7\text{mm}$ .


CABLE SIZE OPTIONS:  
1 = RG178 CABLE, COLOR: BROWN  
2 =  $\phi 1.13\text{MM}$  CABLE, COLOR: GRAY  
3 =  $\phi 1.37\text{MM}$  CABLE, COLOR: BLACK

WASHER AND NUT OPTIONS:  
BLANK = SEPARATELY PACKED (STANDARD)  
A = ASSEMBLED WITH CONNECTOR

ORIENTATION OPTIONS:  
BLANK = DOES NOT HAVE A FIXED ORIENTATION  
F1 = OPPOSITE ORIENTATION (L=50-200MM)  
F2 = SAME ORIENTATION (L=50-200MM)  
F3 = LEFT CONNECTION SAME AS D-FLAT (L=50-200MM)  
F4 = LEFT CONNECTION OPPOSITE TO D-FLAT (L=50-200MM)  
(SEE NOTES 1, 2, 3 AND DIAGRAMS FOR MORE INFORMATION)



REV. DATE & DRN
10 27/04/20 - NYM RELEASE
11 06/05/20 - NYM 2
12 24/07/20 - NYM
13 05/09/23 - NYM
14 31/03/24 - CC
15 22/02/25 - CC
Add GCT logo.

Scale: NTS	THIRD ANGLE	Unstated .X .XX .XXX ANGLES	Tolerances: ±0.2 ±0.2 ±0.2 N/A	
Drawn: CC		Title CABLE ASSEMBLY		
App'd: XXX	Revision: 1.5			
Date: 22 Feb. '25	Unit: mm			

IP Rated  
RF ProductsDrawing Number:  
CABLE 395 RF

Sheet 1 of 1

Drawing © E and O E

© THIS DRAWING IS CONFIDENTIAL AND MUST NOT BE COPIED OR DISCLOSED WITHOUT WRITTEN CONSENT