

## CABLE 391 RF: MMCX R/A PLUG + SMA RIGHT ANGLE BULKHEAD JACK WITH O-RING RATED TO IP67/68 + MULTIPLE CABLE SIZES, 6GHz

## SPECIFICATIONS :

1. MMCX RIGHT ANGLE PLUG, P/N: RFCT-MMCX003-M78.
2. COAXIAL CABLE, SEE P/N OPTIONS FOR DETAIL.
3. SMA RIGHT ANGLE BULKHEAD JACK WITH O-RING RATED TO IP67/68, GOLD PLATED.  
P/N FOR RG178 CABLE: RFCT-SMA073-F78.  
P/N FOR Ø1.37MM CABLE: RFCT-SMA080-F37.

## ENVIRONMENTAL:

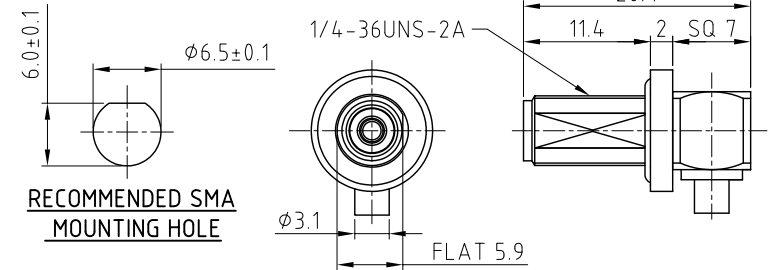
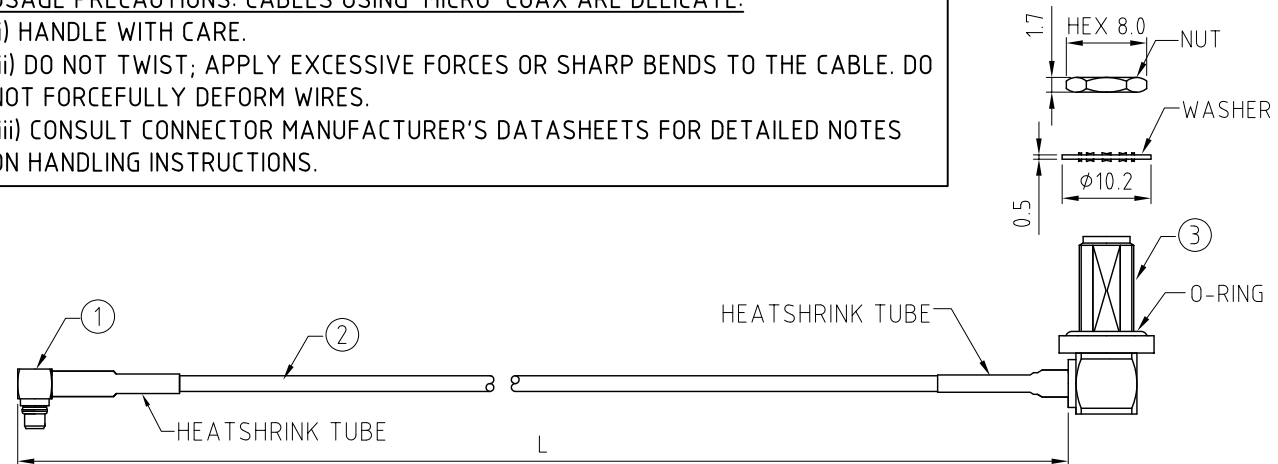
- A. BULKHEAD MOUNTED CONNECTOR (RFCT-SMA073-F78/RFCT-SMA080-F37) RATED TO THE FOLLOWING SPECIFICATION:
- i. IP6X - DUST TIGHT - NO PARTICLE INGRESS.
  - ii. IPX7 WATERPROOF FOR 30 MINUTES UP TO 1 METER UNDERWATER.
  - iii. IPX8 WATERPROOF FOR 48 HOURS AT 1 METER UNDERWATER.

## NOTES:

1. THE ORIENTATION OF CONNECTORS ON DRAWING IS FOR REFERENCE ONLY, IF THE ORDER IS LEFT BLANK THE CONNECTOR WILL NOT HAVE FIXED ORIENTATION.
2. FIXED ORIENTATION IS SUGGESTED FOR CABLE LENGTH 50MM TO 100MM. PLEASE SPECIFY THE FIXED ORIENTATIONS FROM THE ORDER CODE (F1, F2, ETC)
3. CONTACT GCT IF THE ORIENTATION YOU REQUIRE IS NOT SHOWN.
4. WORKING FREQUENCY RANGE: DC-6GHz.
5. OPERATING TEMPERATURE: -40°C~+125°C.
6. IMPEDANCE: 50 Ohm.

## USAGE PRECAUTIONS: CABLES USING 'MICRO' COAX ARE DELICATE:

- (i) HANDLE WITH CARE.
- (ii) DO NOT TWIST; APPLY EXCESSIVE FORCES OR SHARP BENDS TO THE CABLE. DO NOT FORCEFULLY DEFORM WIRES.
- (iii) CONSULT CONNECTOR MANUFACTURER'S DATASHEETS FOR DETAILED NOTES ON HANDLING INSTRUCTIONS.



## HOW TO ORDER

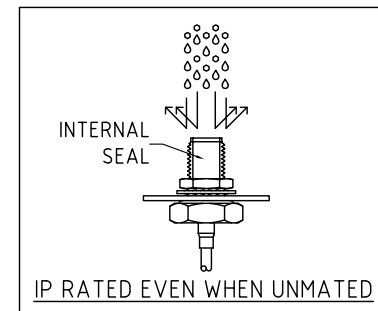
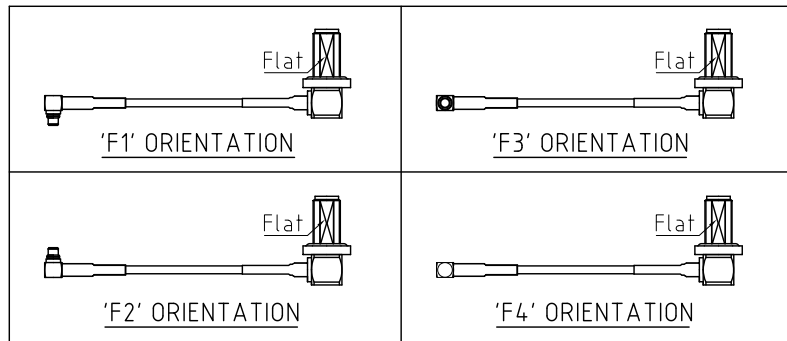
CABLE 391 RF - X X X - X X - X - X

"L" LENGTH IN MM:  
eg: 100MM = 100  
(MIN. 050-MAX.400)  
STANDARD = 100, 150, 200  
Tolerance: 50-200mm: ±5mm.  
201-400mm: ±7mm.

CABLE SIZE OPTIONS:  
1 = RG178 CABLE, COLOR: BROWN  
2 = Ø1.37MM CABLE, COLOR: BLACK

WASHER AND NUT OPTIONS:  
BLANK = SEPARATELY PACKED (STANDARD)  
A = ASSEMBLED WITH CONNECTOR

ORIENTATION OPTIONS:  
BLANK = DOES NOT HAVE A FIXED ORIENTATION  
F1 = OPPOSITE ORIENTATION (L=50-200MM)  
F2 = SAME ORIENTATION (L=50-200MM)  
F3 = LEFT CONNECTION SAME AS D-FLAT (L=50-200MM)  
F4 = LEFT CONNECTION OPPOSITE TO D-FLAT (L=50-200MM)  
(SEE NOTES 1, 2, 3 AND DIAGRAMS FOR MORE INFORMATION)



REV. DATE & DRN  
10 22/04/20 - CC RELEASE  
11 20/06/20 - NYW  
12 20/07/20 - NYW  
13 20/07/20 - NYW  
14 20/07/20 - NYW  
15 20/07/20 - NYW  
16 20/07/20 - NYW  
17 20/07/20 - NYW  
18 20/07/20 - NYW  
19 20/07/20 - NYW  
20 20/07/20 - NYW  
21 20/07/20 - NYW  
22 20/07/20 - NYW  
23 20/07/20 - NYW  
24 20/07/20 - NYW  
25 20/07/20 - NYW  
26 20/07/20 - NYW  
27 20/07/20 - NYW  
28 20/07/20 - NYW  
29 20/07/20 - NYW  
30 20/07/20 - NYW  
31 20/07/20 - NYW  
32 20/07/20 - NYW  
33 20/07/20 - NYW  
34 20/07/20 - NYW  
35 20/07/20 - NYW  
36 20/07/20 - NYW  
37 20/07/20 - NYW  
38 20/07/20 - NYW  
39 20/07/20 - NYW  
40 20/07/20 - NYW  
41 20/07/20 - NYW  
42 20/07/20 - NYW  
43 20/07/20 - NYW  
44 20/07/20 - NYW  
45 20/07/20 - NYW  
46 20/07/20 - NYW  
47 20/07/20 - NYW  
48 20/07/20 - NYW  
49 20/07/20 - NYW  
50 20/07/20 - NYW  
51 20/07/20 - NYW  
52 20/07/20 - NYW  
53 20/07/20 - NYW  
54 20/07/20 - NYW  
55 20/07/20 - NYW  
56 20/07/20 - NYW  
57 20/07/20 - NYW  
58 20/07/20 - NYW  
59 20/07/20 - NYW  
60 20/07/20 - NYW  
61 20/07/20 - NYW  
62 20/07/20 - NYW  
63 20/07/20 - NYW  
64 20/07/20 - NYW  
65 20/07/20 - NYW  
66 20/07/20 - NYW  
67 20/07/20 - NYW  
68 20/07/20 - NYW  
69 20/07/20 - NYW  
70 20/07/20 - NYW  
71 20/07/20 - NYW  
72 20/07/20 - NYW  
73 20/07/20 - NYW  
74 20/07/20 - NYW  
75 20/07/20 - NYW  
76 20/07/20 - NYW  
77 20/07/20 - NYW  
78 20/07/20 - NYW  
79 20/07/20 - NYW  
80 20/07/20 - NYW  
81 20/07/20 - NYW  
82 20/07/20 - NYW  
83 20/07/20 - NYW  
84 20/07/20 - NYW  
85 20/07/20 - NYW  
86 20/07/20 - NYW  
87 20/07/20 - NYW  
88 20/07/20 - NYW  
89 20/07/20 - NYW  
90 20/07/20 - NYW  
91 20/07/20 - NYW  
92 20/07/20 - NYW  
93 20/07/20 - NYW  
94 20/07/20 - NYW  
95 20/07/20 - NYW  
96 20/07/20 - NYW  
97 20/07/20 - NYW  
98 20/07/20 - NYW  
99 20/07/20 - NYW  
100 20/07/20 - NYW

Scale: NTS  
Drawn: CC  
App'd: XXX  
Date: 22 Feb. '25

THIRD ANGLE  
Unstated  
.X  
.XX  
.XXX  
ANGLES  
Tolerances:  
N/A  
N/A  
N/A  
N/A

Title CABLE ASSEMBLY  
Revision:1.6  
Unit: mm

IP Rated  
RF Products

© THIS DRAWING IS CONFIDENTIAL AND MUST NOT BE COPIED OR DISCLOSED WITHOUT WRITTEN CONSENT

GCT GradConn  
www.gct.co  
www.gradconn.com

Type: Cable 391 RF  
CABLE 391 RF  
Drawing Number:  
Sheet 1 of 1  
Drawing © E and O E