

## CABLE 319 RF: I-PEX MHF I LK PLUG + SMA STRAIGHT BULKHEAD JACK WITH O-RING RATED TO IP67/68 + MULTIPLE CABLE SIZES

## SPECIFICATIONS :

## 1. I-PEX MHF I LK PLUG, P/N:

FOR Ø1.37MM CABLE: 20670-001R-37 + 3376-000.

FOR Ø1.13MM CABLE: 20670-001R-13 + 3376-000.

FOR RG178 CABLE: 20670-001R-18 + 3376-000.

## 2. COAXIAL CABLE, SEE P/N OPTIONS.

3. SMA STRAIGHT BULKHEAD JACK WITH O-RING RATED TO IP67/68, P/N:  
RFCT-SMA002-F78.

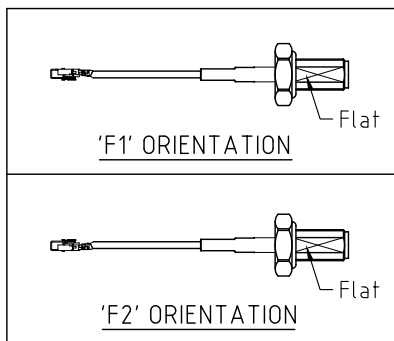
## ENVIRONMENTAL:

A. BULKHEAD MOUNTED CONNECTOR (RFCT-SMA002-F78) TESTED TO  
THE FOLLOWING SPECIFICATION:

- IP6X - DUST TIGHT - NO PARTICLE INGRESS.
- IPX7 WATERPROOF FOR 30 MINUTES UP TO 1 METER UNDERWATER.
- IPX8 WATERPROOF FOR 48 HOURS AT 1 METER UNDERWATER.
- IPX8 WATERPROOF FOR 12 HOURS AT 5 METERS UNDERWATER.
- PRESSURE TEST - 1 BAR FOR 10 SECONDS.

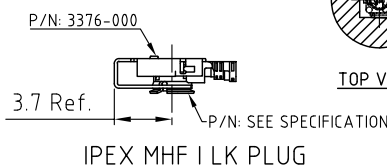
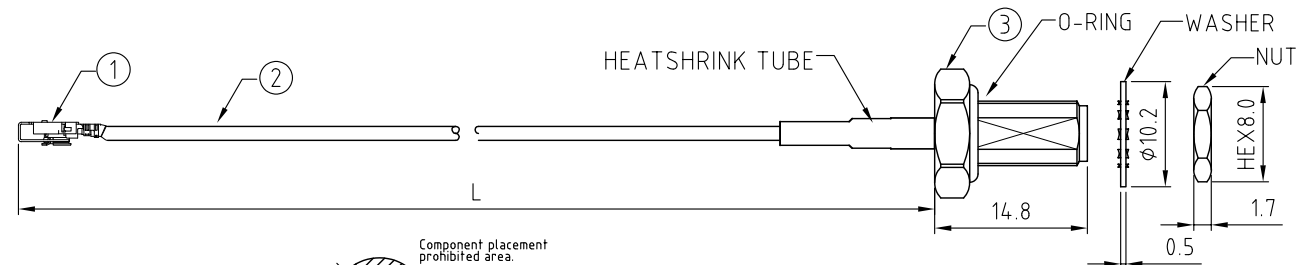
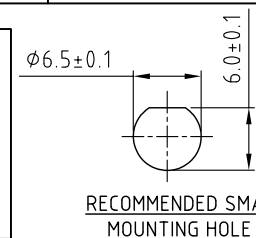
## NOTES:

- THE ORIENTATION OF CONNECTORS ON DRAWING IS FOR REFERENCE ONLY, IF THE ORDER IS LEFT BLANK THE CONNECTOR WILL NOT HAVE FIXED ORIENTATION.
- FIXED ORIENTATION IS SUGGESTED FOR CABLE LENGTH 25MM TO 100MM. PLEASE SPECIFY THE FIXED ORIENTATIONS FROM THE ORDER CODE (F1, F2, ETC)
- CONTACT GCT IF THE ORIENTATION YOU REQUIRE IS NOT SHOWN.
- WORKING FREQUENCY RANGE: DC-3GHz.
- OPERATING TEMPERATURE: -40°C TO +85°C
- IMPEDANCE: 50 OHM



## USAGE PRECAUTIONS: CABLES USING 'MICRO' COAX ARE DELICATE:

- HANDLE WITH CARE.
- DO NOT TWIST; APPLY EXCESSIVE FORCES OR SHARP BENDS TO THE CABLE. DO NOT FORCEFULLY DEFORM WIRES.
- CONSULT CONNECTOR MANUFACTURER'S DATASHEETS FOR DETAILED NOTES ON HANDLING INSTRUCTIONS.



## HOW TO ORDER

CABLE 319 RF - X X X - X X - X - X

"L" LENGTH IN MM:

eg: 100MM = 100

(MIN. 025-MAX.400

STANDARD = 100, 150, 200)

Tolerance: 50-200mm: ±5mm.

201-400mm: ±7mm.

CABLE SIZE:

1 = Ø1.37MM CABLE, COLOR: BLACK (STANDARD)

2 = Ø1.13MM CABLE, COLOR: GRAY

3 = RG178 CABLE, COLOR: BLACK

WASHER AND NUT OPTIONS:

BLANK = SEPARATELY PACKED (STANDARD)

A = ALL ASSEMBLED WITH CONNECTOR

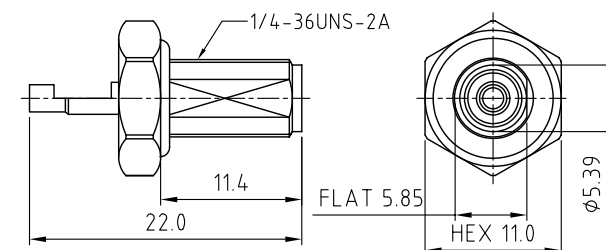
ORIENTATION OPTIONS:

BLANK = DOES NOT HAVE A FIXED ORIENTATION

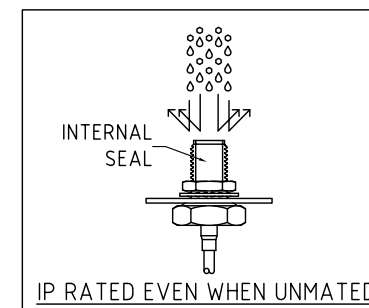
F1 = MHF CONNECTION DOWN (L=25-200MM)

F2 = MHF CONNECTION UP (L=25-200MM)

(SEE NOTES 1, 2, 3 AND DIAGRAMS FOR MORE INFORMATION)



## SMA DETAIL DRAWING



REV. DATE & DRN	10 27/07/18 - NYM RELEASE
11 05/08/18 - NYM RELEASE OPTION	
12 22/05/20 - NYM	
13 27/07/20 - NYM	
14 06/10/21 - NYM	
15 03/17/20 - NYM	
16 06/10/21 - NYM	
17 17/03/24 - CC	
18 16/02/25 - KY	
Add GCT logo.	

Scale: NTS	THIRD ANGLE	Unstated .X .XX .XXX ANGLES	Tolerances: N/A N/A N/A N/A
Drawn: KY			
App'd: XXX	Title CABLE ASSEMBLY		
Date: 16 FEB. '25	Revision: 1.8	Unit: mm	

IP Rated  
RF Products

GCT

GradConn

www.gct.co

www.gradconn.com

Type: Cable 319 RF

CABLE 319 RF

Drawing Number:

Sheet 1 of 1

Drawing © E and O E

© THIS DRAWING IS CONFIDENTIAL AND MUST NOT BE COPIED OR DISCLOSED WITHOUT WRITTEN CONSENT