

## CABLE 252 RF: SMA R/A PLUG + RP SMA STRAIGHT BULKHEAD JACK W/O-RING RATED TO IP67/68 + RG178 CABLE

## SPECIFICATIONS :

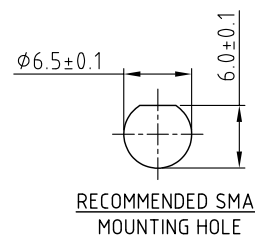
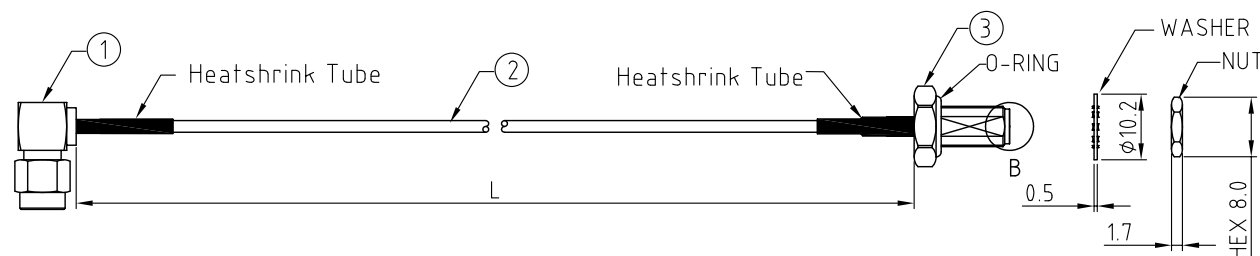
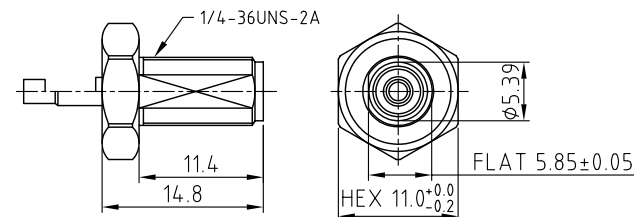
1. SMA RIGHT ANGLE PLUG, P/N: RFCT-SMA025-M78.
2. COAXIAL CABLE, SEE P/N OPTIONS FOR DETAIL.
3. RP SMA STRAIGHT BULKHEAD JACK W/O-RING RATED TO IP67/68, P/N: RFCT-SMA008-F78.

## ENVIRONMENTAL:

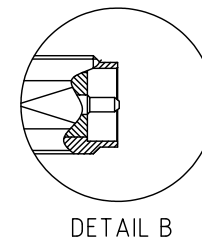
- A. BULKHEAD MOUNTED CONNECTOR (RFCT-SMA008-F78) TESTED TO THE FOLLOWING SPECIFICATION:
- i. IP6X - DUST TIGHT - NO PARTICLE INGRESS.
  - ii. IPX7 WATERPROOF FOR 30 MINUTES UP TO 1 METER UNDERWATER.
  - iii. IPX8 WATERPROOF FOR 48 HOURS AT 1 METER UNDERWATER.
  - iv. IPX8 WATERPROOF FOR 12 HOURS AT 5 METERS UNDERWATER.
  - v. PRESSURE TEST - 1 BAR FOR 10 SECONDS.

## NOTES:

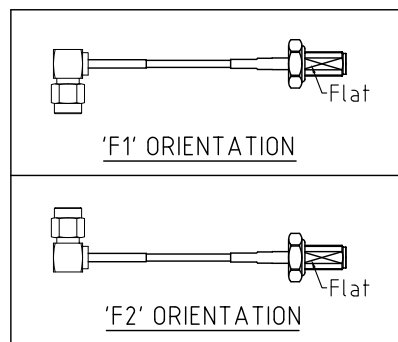
1. THE ORIENTATION OF CONNECTORS ON DRAWING IS FOR REFERENCE ONLY, IF THE ORDER IS LEFT BLANK THE CONNECTOR WILL NOT HAVE FIXED ORIENTATION.
2. FIXED ORIENTATION IS SUGGESTED FOR CABLE LENGTH 25MM TO 100MM. PLEASE SPECIFY THE FIXED ORIENTATIONS FROM THE ORDER CODE (F1, F2, ETC)
3. CONTACT GCT IF THE ORIENTATION YOU REQUIRE IS NOT SHOWN.
4. WORKING FREQUENCY RANGE: DC-3GHz.
5. OPERATING TEMPERATURE: -40°C TO +125°C
6. IMPEDANCE: 50 OHM

RECOMMENDED SMA  
MOUNTING HOLE

SMA JACK DETAIL DRAWING



DETAIL B

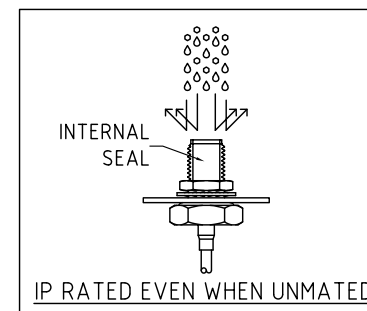
HOW TO ORDER  
CABLE 252 RF - X X X X - X X - X - 1

"L" LENGTH IN MM:  
eg: 100MM = 0100  
(MIN. 0050-MAX.2000)  
STANDARD = 0100, 0150, 0200  
Tolerance: 50mm: ±2mm.  
51-200mm: ±5mm.  
201-500mm: ±7mm.  
>501mm: ±10mm.

CABLE SIZE:  
1 = RG178 CABLE, COLOR: BROWN.

WASHER AND NUT OPTIONS:  
BLANK = SEPARATELY PACKED (STANDARD)  
A = ALL ASSEMBLED WITH CONNECTOR

ORIENTATION OPTIONS:  
BLANK = DOES NOT HAVE A FIXED ORIENTATION  
F1 = SMA PLUG CONNECTION DOWN (L=50-200MM)  
F2 = SMA PLUG CONNECTION UP (L=50-200MM)  
(SEE NOTES 1, 2, 3 AND DIAGRAMS FOR MORE INFORMATION)



Type: Cable 252 RF

CABLE 252 RF

Drawing Number:

Sheet 1 of 1

Drawing © E and O E

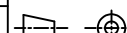
Scale: NTS

Drawn: KY

App'd: XXX

Date: 16 FEB. '25

THIRD ANGLE



Title CABLE ASSEMBLY

Revision: 1.5

Unstated  
.X  
.XX  
.XXX  
ANGLES

Tolerances:  
N/A  
N/A  
N/A  
N/A

Unit: mm

IP Rated  
RF Products

© THIS DRAWING IS CONFIDENTIAL AND MUST NOT BE COPIED OR DISCLOSED WITHOUT WRITTEN CONSENT

**GCT** **GradConn**

www.gct.co

www.gradconn.com