



Qoltec FAST Ethernet PoE SWITCH 8x RJ45 PoE 2x RJ45 Uplink 1x SFP | 120W | 1000 Mb

Product code: 52297

The SWITCH PoE network switch combines the functions of a switch with the ability to power network devices via Ethernet. It is equipped with 8 10/100/1000 Mbps ports with PoE power support, as well as 2 1000 Mbps Uplink ports and a 1000 Mbps SFP fiber port. It enables data transmission and powering of IEEE 802.3af compliant devices e.g. IP cameras, Wi-Fi access points, offering a maximum power of up to 15.4W per port and a total maximum power of up to 120W for the entire device. It automatically detects and identifies connected devices, ensuring safe and optimal power supply. Power cable included.

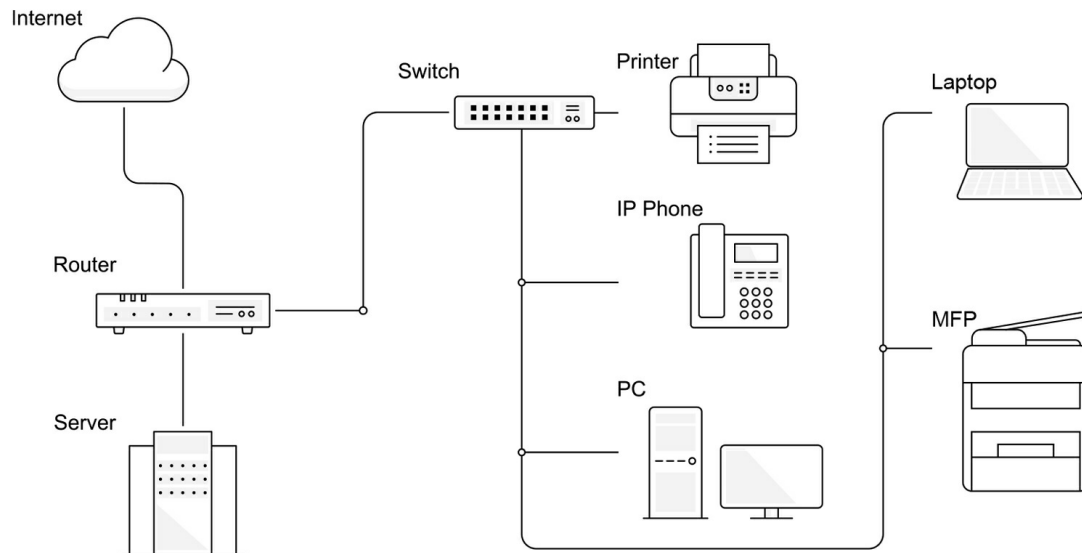
DISCOVER THE FULL POTENTIAL OF YOUR NETWORK



Advanced PoE technology – Stable and fast local network, smooth data transmission

Experience a reliable and efficient plug-and-play network device. With 8 10/100/1000 Mbps ports with PoE function, as well as additional 2 Uplink (RJ45 1000 Mbps) and SFP (fiber 1000 Mbps) ports, the device allows you to create a flexible and scalable LAN – without unnecessary power cables, external power supplies or additional switches.

RELIABLE COMMUNICATION - WIDELY USED IN ANY SPACE

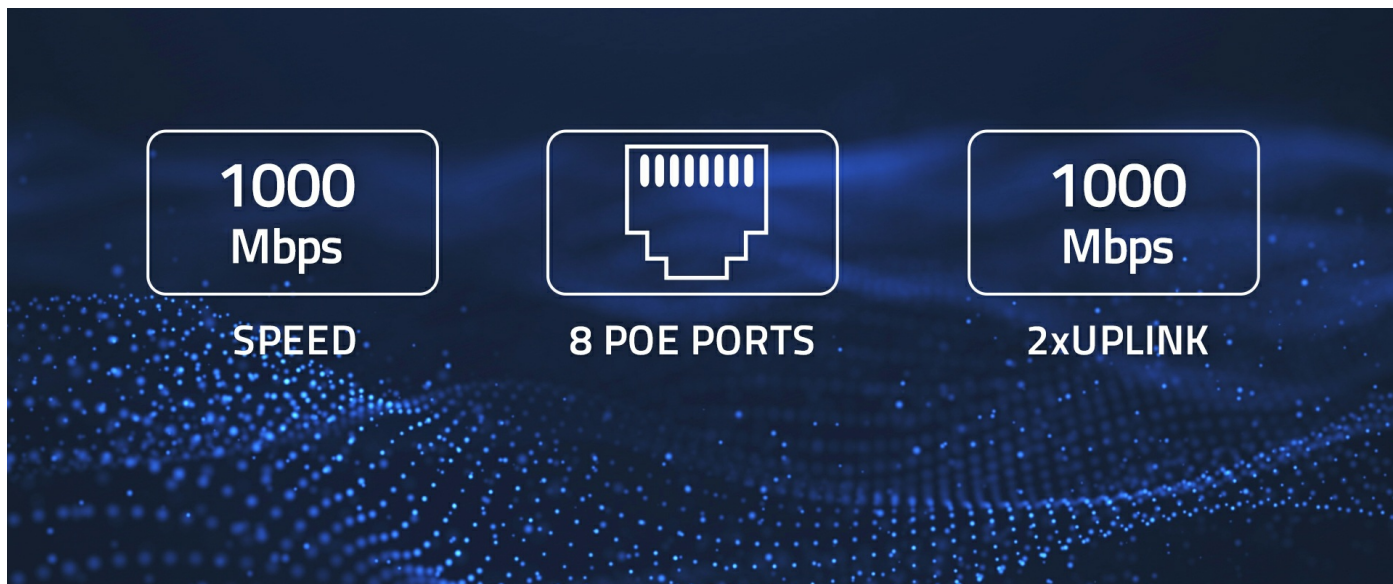


Power and transmit data from IP cameras, connect network points using fiber over SFP port

The switch is designed for users who need a reliable network connection in various environments:

- **in home multimedia networks** (movie streaming, online gaming, smart home operation),
- **In IP surveillance** (support for PoE-powered cameras),
- **in small and medium-sized companies** (Wi-Fi access points, VoIP, NAS servers),
- **in fiber optic installations** (thanks to the SFP port - e.g., interconnection between buildings).

POWER UP AND TRANSFER DATA AT SPEEDS OF UP TO 1 GB/S



Automatically detects and recognizes PoE devices, Data transmission speed up to 1 Gb/s

Discover new possibilities with a Qoltec device that offers:

- Compliant with IEEE 802.3af - offering up to **15.4W** per port and up to **120W** total output power for the entire switch,
- Automatic detection of PoE devices,
- SFP port for fiber optic connections,
- Data transmission speed up to 1Gb/s,
- Robust metal housing protects the electronics inside and allows for operation in more demanding conditions,
- Quiet operation thanks to passive cooling,
- Plug & Play - no configuration.

QUIET OPERATION, STURDY METAL CONSTRUCTION AND INSTANT INSTALLATION



Simple and fast installation of the device, Plug&play

Our device **Offers instant and hassle-free installation**, thanks to Plug & Play technology, which requires no additional configuration or technical expertise. You only need to follow a few simple steps. First, **connect the devices to the appropriate RJ45 ports using the appropriate network cables** and then connect one of the ports to your router or access modem. Make sure the LEDs on the switch indicate activity on the ports. The rugged metal housing protects the electronics, provides durability, resistance to electromagnetic interference and efficient heat dissipation, resulting in long and stable operation.

TRUST CONFIRMED BY WARRANTY

Product with 24 months guarantee

Do you care about the high quality of the product you buy? Our solutions will meet your expectations. **The product is covered by a 24-month warranty** valid from the day of purchase.

TECHNICAL DATA

Producer	Qoltec
Standard	IEEE802.3, IEEE802.3u, IEEE802.3x, IEEE802.3af
Interface	8x RJ45, 1x SFP, 2x RJ45 Uplink
Max. bandwidth	12Gb/s
Max. baud rate	Uplink : 1000Mb/s, SFP: 1000Mb/s, PoE : 10/100/1000Mb/s
Cooling system	Passive cooling
Usage	Communication, Internet
Application	IP surveillance (PoE cameras) Wi-Fi access points Small and medium office networks Automation and IoT systems
OTHER PARAMETERS	
Colour	Black
Material	Metal
Working temperature	-10 C ~ 55
Dimensions (D/L x W x H)	120 x 200 x 43 mm
Package	Box
Package contents	1 x Network switch 1 x Cable 1 x User manual 1 x Warranty card
Package depth / length [mm]	185
Package width [mm]	235
Package height [mm]	70
Net weight [kg]	0.763
Gross weight [kg]	0.894
Warranty	24 months
EAN code	5901878522975