

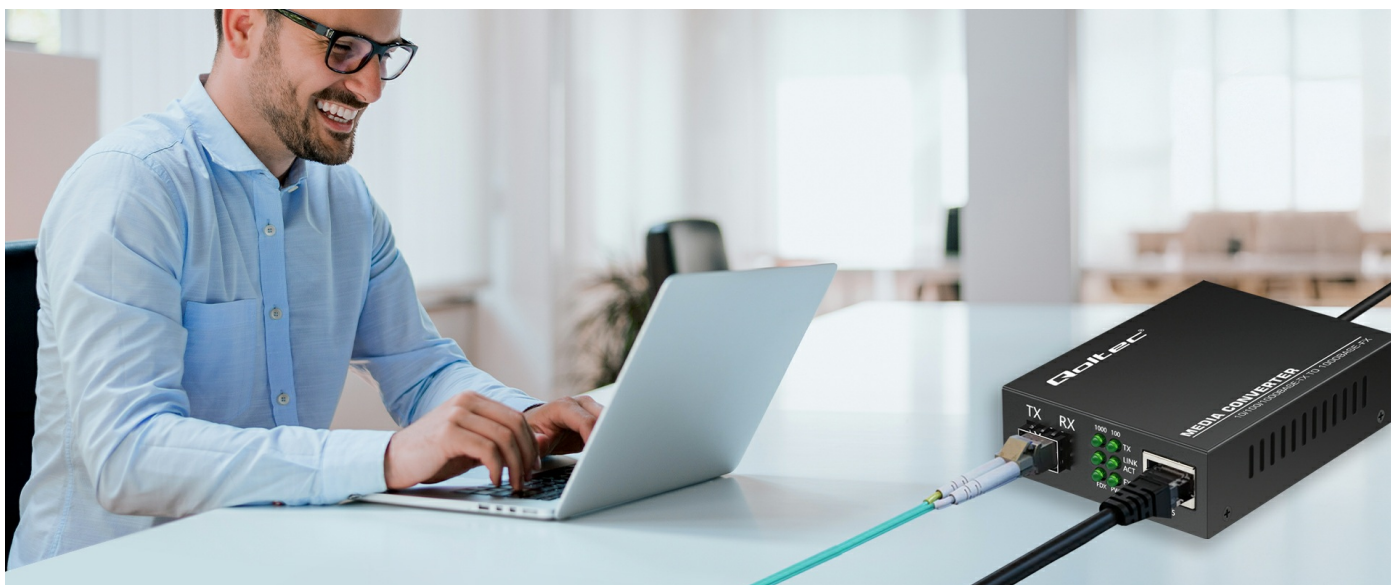


## Qoltec Bidirectional Ethernet SWITCH Media Converter 1x RJ45 1x SFP | 1000Mbps | 5V

Product code: 52295

Bidirectional media converter for transmitting 10/100/1000Base-TX Ethernet signal over 1000Base-FX fiber. Equipped with 1 RJ45 port and SFP slot, it allows you to easily extend your LAN over long distances. Compatible with most SFP modules. Supports Plug & Play mode. Ideal for monitoring systems, server rooms and office infrastructure. Features status LEDs : TX, RX LINK / ACT, POWER, FDX.

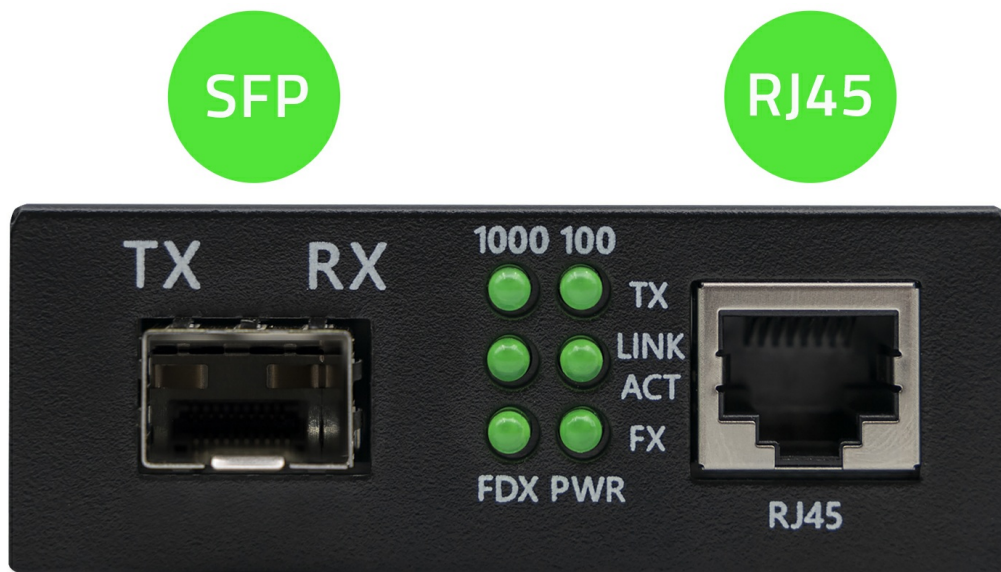
### BET ON TECHNOLOGY THAT MAKES A DIFFERENCE - GIGABIT SPEED, MAXIMUM THROUGHPUT, FLEXIBLE CONFIGURATION



Stable and fast local network without electromagnetic interference

A reliable and efficient network device that enables conversion of the signal from RJ45 cable (10/100/1000 Mbps) to fiber optic cable and vice versa with a transmission speed of 1000 Mbps. It provides a stable and fast connection and smooth data transmission. The device works bidirectionally - it supports both sending and receiving data in Full-Duplex or Half-Duplex mode. Such functionality allows significantly **Expand the capabilities of the network infrastructure, without the need for complex solutions** or incurring the cost of investing in additional equipment.

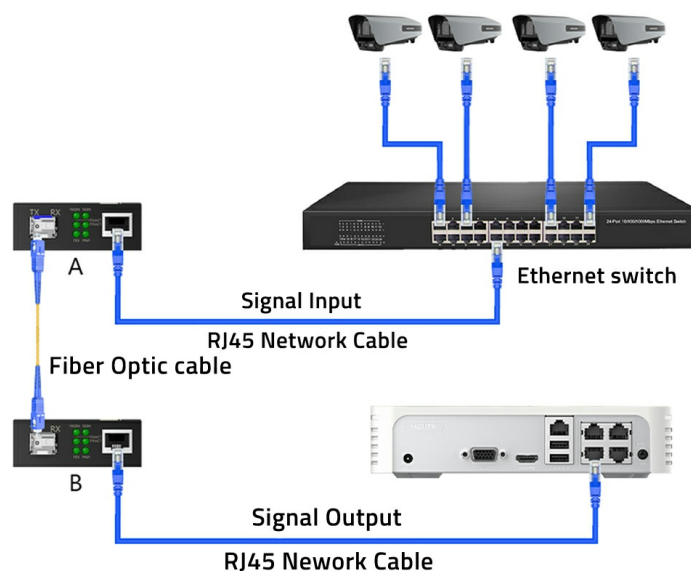
## ROBUST METAL CONSTRUCTION, ADVANCED FEATURES AND EASE OF USE



Bidirectional data transmission up to 1 Gbps, Full/Half Duplex, information LEDs: TX, FX LINK/ACT, POWER, FDX  
Discover new possibilities with a Qoltec device that offers:

- Supports **Simultaneous transmission and reception of data** In Full-Duplex or Half-Duplex mode,
- Equipped with **4 RJ45 ports and SFP**
- **SFP data rates up to 1Gb/s**,
- **Metal housing**,
- LED indicators for connection status and activity : TX, FX LINK/ACT, POWER, FDX,
- Works with CAT 5, 5e, 6, 7, 8 network cables,
- Provides **high resistance to electromagnetic interference and stable data transmission even over long distances**.

## EXPAND YOUR MULTIMEDIA CAPABILITIES IN JUST MINUTES



Simple and quick installation of the device in a few steps , automatic connection detection

Our device **Offers instant and hassle-free installation**, thanks to Plug & Play technology, which requires no additional configuration or technical expertise. **The device is ready to work almost immediately after connecting, just follow a few steps :**

- Insert the appropriate SFP module into the slot on the converter,
- Connect the devices to the appropriate ports using network cables and fiber optic patchcord,
- Connect RJ45 port to router, switch or access modem,
- Connect the power supply and make sure the LEDs indicate activity on the ports.

## HOW TO PROPERLY SET UP A FIBER OPTIC CONNECTION?



When is one converter enough and when do you need two converters? Find out how to choose the right number of devices for your network infrastructure

To create a full network connection over fiber, in most cases two media converters are needed – one on each side of the link. Such a configuration is required when the two devices you want to connect (e.g. switches, routers, computers) have only standard RJ45 (Ethernet) ports and no integrated SFP ports. **However, if one of the devices already has an SFP port and supports fiber optic modules (e.g., a modern switch), you only need to use one converter on the device side without an optical port.**

## TRUST CONFIRMED BY WARRANTY

Product with 24 months guarantee

Do you care about the high quality of the product you buy? Our solutions will meet your expectations. **The product is covered by a 24-month warranty** valid from the day of purchase.

## TECHNICAL DATA

Producer	Qoltec
Standard	IEEE802.3, IEEE802.3u, 10/100/1000Base-TX na 1000Base-FX
Operating voltage	5V
Operating current	1A
Interface	1xRJ45, 1xSFP
Max. baud rate	SFP: 1000Mb/s, RJ45: 10/100/1000Mb/s
Cooling system	Pasive
Usage	Communication, Internet
Additional information	Cable length ~0.39m Power cable ~0.35m Full-duplex & half duplex
OTHER PARAMETERS	
Colour	Black
Material	Metal
Working temperature	0 C ~ 60
Dimensions (D/L x W x H)	70 x 100 x 25 mm
Package	Box
Package contents	1 x Media converter 1 x Power adapter 1 x User manual 1 x Guaranty card
Package depth / length [mm]	105
Package width [mm]	120
Package height [mm]	63
Net weight [kg]	0.175
Gross weight [kg]	0.235
Warranty	24 months
EAN code	5901878522951