

YE SERIES (Single Phase One-Stage Filters)



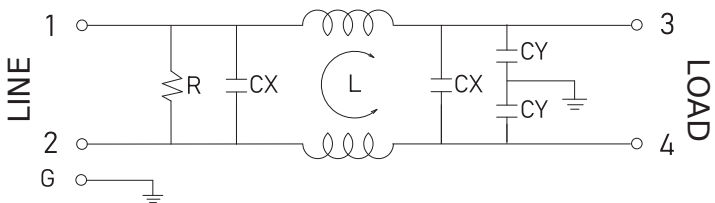
Features

- The YE series is a special designed single phase one-stage filter with both common mode and normal mode performing high noise suppression.
- The rated current can be offered from 5 to 30 amps.
- Various output selections such as fast-on terminal, M4 screw terminals and lead wire.
- Low leakage current version upon requested.
- Approved by UL ,CSA ,VDE and CE
- Application for Electrical and electronic equipment, Household equipment, Automation equipment, Fitness machine
- Custom-speciÀ c versions are available on request.

Technical SpeciÀ cation

| | |
|------------------------------|-------------------------------------|
| Rated voltage | 125/250VAC |
| Rated currents | Up to 30A |
| Operating frequency | 50/60Hz |
| Hipot rating(Line-to-line) | 1450VDC |
| Hipot rating(Line-to-ground) | 2250VDC |
| Operating temperature | -25~+85YC |
| Safety compliance | 5A (UL,CSA) ; 5 to 30A (VDE, CE) |

Typical electrical schematic



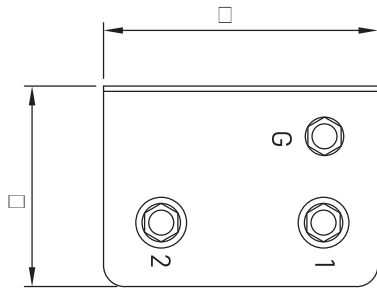
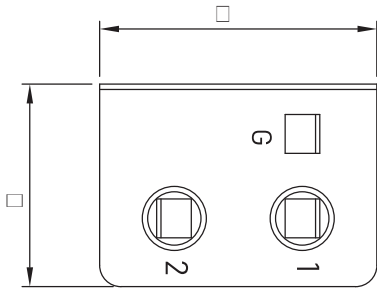
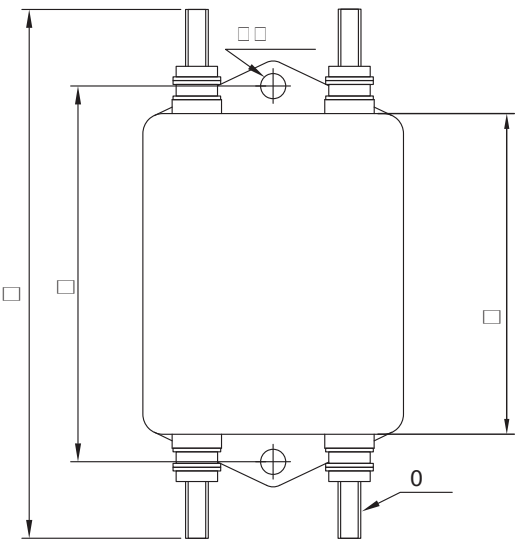
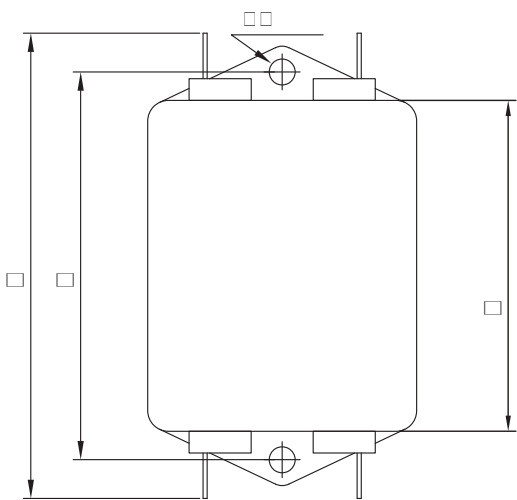
Filter Selection Table

| Part NO. | Rated Current (A) | Inductance L(mH) | Capacitance CX(μF) | Capacitance CY(pF) | Resistance R(ohm) | Output connections |
|----------|-------------------|------------------|--------------------|--------------------|-------------------|--|
| YE05T1 | 5 | | | | | Fast-on terminal (optional lead-wire) |
| YE10T1 | 10 | | | | | |
| YE15T1 | 15 | | | | | |
| YE20T1 | 20 | | | | | |
| YE30T1 | 30 | | | | | |
| YE05T4 | 5 | | | | | M4 Screw terminals |
| YE10T4 | 10 | | | | | |
| YE15T4 | 15 | | | | | |
| YE20T4 | 20 | | | | | |
| YE30T4 | 30 | | | | | |

Physical Dimensions: (mm)

<(7

<(7



Typical Attenuation & RPPRQPRGH 1RUPDOPRGH

