

Solenoids 08XX



Catalog Register
A17, P17

Publication 7500784.06.04.96



Standard voltages: 24 V DC, 230 V 50 Hz, other voltages on request.

Design to VDE Reg. VDE 0580. 100% duty cycle.

Max. wire cross section of connection cable:

Solenoid 080X: 1.5 mm²,

Solenoid 084X: 2.5 mm²

| | Rated power | | | Degree of protection to DIN 40050 ¹⁾ | Perm. relative air humidity [%] | Temperatures ²⁾ | | | Weight [kg] | Voltage | Circuit diagram | Cat. No. Solenoids | Constructional features |
|---|-------------|-----------|------------|---|---------------------------------|----------------------------|---------------|---------------------|-------------|---------|-----------------|--------------------|--|
| | DC | AC Inrush | AC Holding | | | Fluid max. [°C] | Ambience [°C] | Max. temp. sum [°C] | | | | | |
|  | 16W | 50VA | 27VA | IP00 | <80 | +80 | -25 to +60 | 120 | 0.3 | O | 01 | 0800 | Epoxy encapsulated solenoid |
| | 16W | 50VA | 27VA | IP65 | <80 | +80 | -25 to +60 | 120 | 0.33 | O | 01 | 0801 | Epoxy encapsulated solenoid, connector (black) to solenoid, DIN 43650 A |
| | | 18VA | 18VA | IP65 | <80 | +80 | -25 to +60 | 120 | 0.34 | AC | 06 | 0807 | Epoxy encapsulated solenoid, connector (black) DIN 43650 A, with rectifier |
|  | 15W | 50VA | 22VA | IP65 | <80 | +120 | -5 to +60 | 140 | 0.5 | O | 01 | 0840 | Steel housing, cable gland Pg 11, for M15x1 mounting thread |
| | | 17VA | 17VA | IP65 | <80 | +100 | -5 to +60 | 140 | 0.5 | AC | 06 | 0841 | Steel housing, cable gland Pg 11, for M15x1 mounting thread, with rectifier, varistor |
| | 15W | 50VA | 22VA | IP66 | <95 | +130 | -5 to +70 | 150 | 0.5 | O | 01 | 0842 | Steel housing, cable gland Pg 11, coil- and terminal space epoxy sealed, for M15x1 mounting thread, cable +140 °C 3x1.5mm ² , 3m long or as specified |

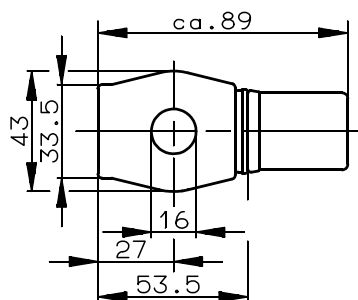
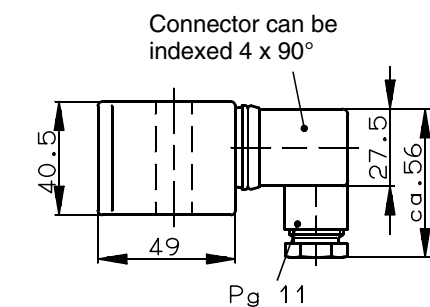
O – DC or AC,
depending on winding

¹⁾ Degree of protection applies to complete assembly composed of valve and coil, with electrical wiring according to regulations.

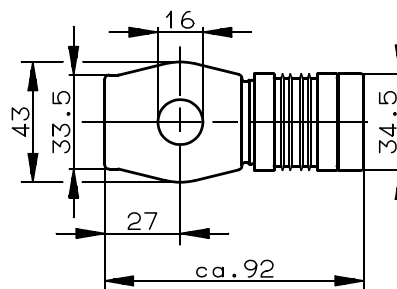
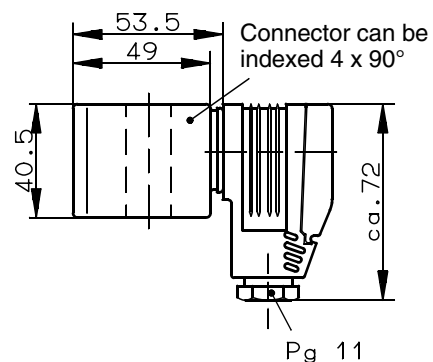
²⁾ Temperatures mentioned refer to solenoids only. Permissible valve temperatures are not considered here. The max. temperature sum composed of the ambient- and fluid temperature must not be exceeded.

Dimensional drawings

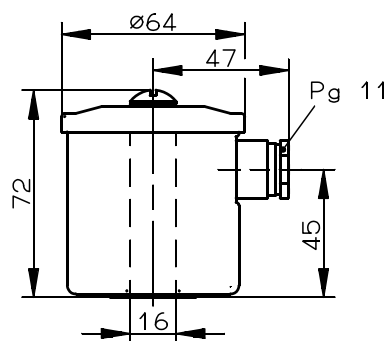
| |
|----------------------|
| Cat. No. Solenoid |
| 0801 |



| |
|----------------------|
| Cat. No. Solenoid |
| 0807 |

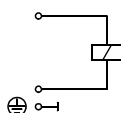


| |
|-------------------------|
| Cat. No. Solenoid |
| 0840, 0841, 0842 |

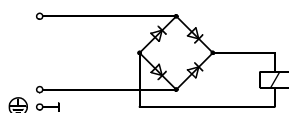


Circuit diagrams

01



06



Connection possibilities for epoxy encapsulated solenoids

| Picture | Description | Cat. No. (cpl. part) | Remarks |
|---|--|----------------------------------|--|
|  | Connector to DIN 43650 A (black) (grey) | 0570275 0657859 | 12...250 VDC/VAC |
| | Connector to DIN 43650 A with knurled-head screw (black) (grey) | 0659295 0660135 | 12...250 VDC/VAC |
| | Connector to DIN 43650 A with rectifier (small design) (black) (grey) | 0663303 0664633 | 12...250 VDC/VAC  |
|  | Connector to DIN 43650 A with LED (black) (grey) | 0664031 0664030 | 15...30 VDC  |
| | Connector to DIN 43650 A with lamp (black) (grey) | 0663034 0663860 | 150...250 VDC/VAC  |
|  | Connector with rectifier, symbol to DIN 43650 A (black) (grey) | 0570819 0570322 | 15...250 VDC/10...250 VAC  |
|  | Connector to DIN 43650 A with cable 3x1 mm ² , 3 m long | 0681493 | 250 VDC/VAC |
|  | Connector to DIN 43650 A with cable 3x1 mm ² , 3 m long, with LED and Zener diode | 0664363 | 24 VDC/VAC  |
|  | Adapter with varistor and indicating light for connectors to DIN 43650 A, degree of protection IP 54 | 0662804 | 24 VDC/VAC  |
| | Length 39 mm, height 20 mm above solenoid | | |
| | Adapter with RC-link and indicating light for connectors to DIN 43650 A, degree of protection IP 54 | 0662805 | 220 VDC/VAC  |
| | Length 39 mm, height 20 mm above solenoid | | |