

This document shall be issued upon changes to the design of a GCT Product.
It shall be distributed to all Interested Parties and shall be made available on the GCT Website.

Date of Notice: (DD/MM/YYYY)

13/03/2025

Product Change Notice Number:

SIM8066 B PCN
20250313

Product Identifier:

SIM8066-6-1-14-01-A

Drawing Revision Letter:

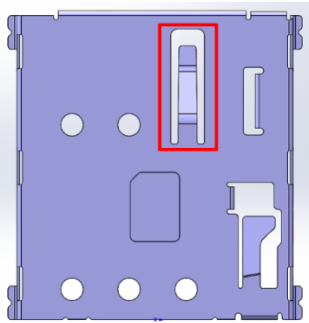
B

Effective from date code/batch code:

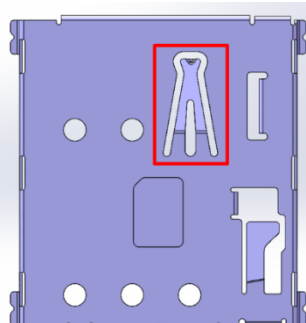
On or prior to 1st
July 2025
(see details below)**Description of Changes:** with diagrams if relevant**Modification of the card detect switch to a more durable bifurcated design, which provides improved reliability:**

1. Card detect switch – shell side, change to a bifurcated design

Rev A3

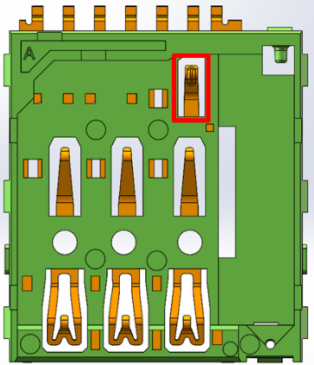


Rev B

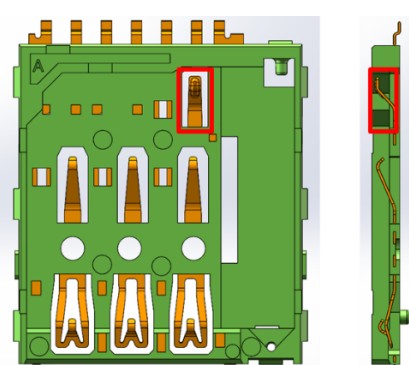


2. Card detect switch – spring contact side, change to a flatter design

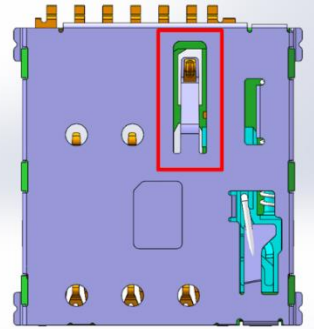
Rev A3



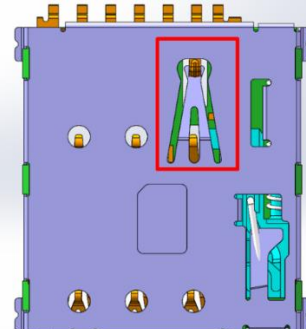
Rev B

**General overview**

Rev A3



Rev B



Reason for Change:

As part of our continuous improvement program, tests have shown that the bifurcated design is more durable, which, when coupled with the flatter spring contact design, increases contact area to give improved reliability.

Anticipated Impact on Form, Fit, Function or Reliability:

There is no material impact on form, fit, function or reliability. As highlighted in Description of Changes above, there are some aesthetic differences, but these only impact any Incoming Quality Control (IQC) check sheets. See Appendix for further details

Required Inventory Action:

Transition from Revision A3 to Revision B will be as a rolling change. Version A3 products can continue to be used without concern.

During March 2025, GCT will make verification samples available for all customers. Customer may wish to use these samples to undertake their own testing of Revision B products. However, the product changes are very minor and GCT has undertaken full successful testing of Revision B products, so such testing may be redundant.

GCT will ensure availability of Revision A3 products until 30th June 2025. After this date, only Revision B products will be available.

If you would like to switch over to Revision B product prior to 1st July 2025, please advise your local GCT Customer Services representative.

Traceability:

As both revision A3 and revision B will be supplied concurrently until June 30th, 2025, for ease of traceability during this period the following convention for Batch Reference will be observed from March 1st, 2025 until June 30th, 2025:

Batch Reference formatted as: YYMMDD-OR#, where:

YY = Year of manufacture

MM = Month of Manufacture

DD = Day of Manufacture

-0 = dash + numeral zero

R = Revision: Either 0 (Revision B) or 1 (Revision A3)

= Numeral from 1 to 9 indicating production run within the date represented by YYYYMMDD

For example, 250625-001 represents first production run on 25th June 2025 of Revision B parts. Conversely, 250503-012 represents the second production run on 3rd May 2025 of Revision A3 parts.

Additionally, and with immediate effect until GCT ceases to supply revision A3 on 30th June 2025, each carton of revision B of SIM8066 will have a label affixed indicating that the parts are the new revision. Revision A3 cartons and will not have a label affixed.

At product level, it should be easy to identify the visual difference between the two revisions (see above), therefore GCT believes that the traceability measures detailed should be sufficient for all operational purposes.

Notes:

See Appendix below for a categorized list of all changes effected by this PCN.

Contact Information(s): (if blank, please visit www.gct.co or use the regional details below).

GCT Europe (UK) +44 (0)1707 321122 sales@gct-europe.com	GCT Americas (USA) +1 978 208 1618 sales@gct-americas.com	GCT Asia-Pacific (HK) +852 2578 9030 sales@gct-apac.com

QR18 Version 1.2

Prepared by: MJC

Reviewed by: ST

Approved by: ST

Prepared: 06/04/2017

Reviewed: 06/04/2017

Approved: 06/04/2017

Appendix – Description of Changes by Category:

FORM & DIMENSIONS: Minor changes in appearance (see diagrams above) which should be communicated to your IQC team.
FOOTPRINT/LAYOUT: No change.
FIT/MATING ISSUES: No change.
FUNCTION: No change.
ELECTRICAL ISSUES: No change.
PLATING ISSUES: No change.
MATERIALS: No change.
DURABILITY & FORCES: Improvement in durability of card detection switch.
PACKAGING: No change.
PICK & PLACE ISSUES: No change.
AVAILABILITY/OPTIONS/VARIANTS: Current version (Revision A3) will be available until 30 th June 2025. Improved version (Revision B) will be available from March 2025, including availability of verification samples.
ENVIRONMENTAL/TEMPERATURE ISSUES: No change.
CERTIFICATIONS/COMPLIANCE: No change.
OTHER ISSUES: No change.

--END--