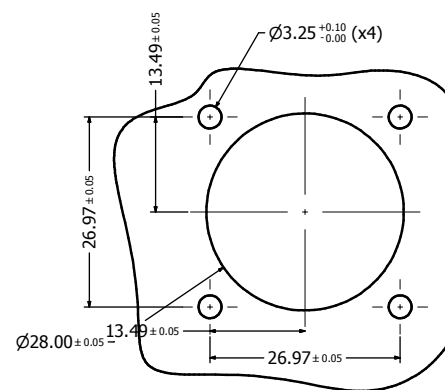
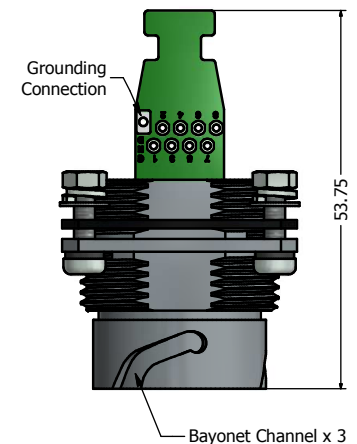


Recommended Double-D Panel Cutout



Recommended Round Panel Cutout



## Notes:

### 1. Electrical Specifications:

- Meets EIA/TIA-568-B.2 Cat.5e Specification
- Contact Resistance: 20 mOhm max.
- Insulation Resistance: 500MOhm min. @ 100 VDC
- Current Rating: 1.2A max. at 25°C
- Working Voltage: 100 VDC
- DWV: 1000 VDC/60s Contact to Contact, 1500 VDC/60s Contact to Metal Shell
- Operating Temperature: -40°C to +85°C

### 2. Material and Finish:

- Receptacle Housing (with Flange): Zinc Die-Cast, Finish: Nickel Plated
- RJ45 PCB Jack Metal Shell: Copper Alloy, Nickel Plated
- RJ45 PCB Jack Plastic Housing: Glass filled PBT UL94 V-0, Color: Black
- RJ45 PCB Jack Contacts: Phosphor Bronze, Finish: 50u" Gold min. over Nickel
- PCB: FR-4
- Panel Gasket: NBR, Color: Black
- M3 Mounting Hardware: Stainless Steel
- Includes 4 x (Screw + Nut + Flat Washer + Spring Lock Washer)

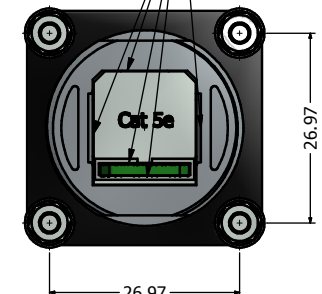
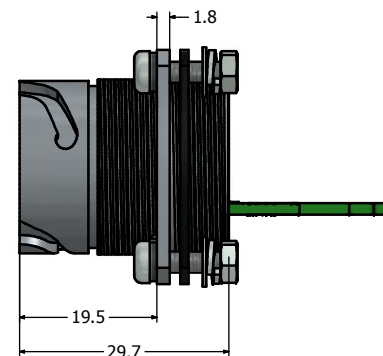
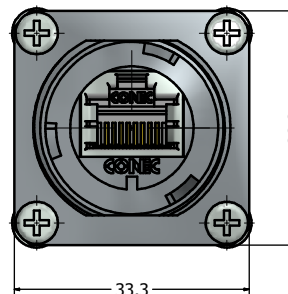
3. Connector can be front or rear mounted to a maximum panel thickness of 3.2mm.

4. IP67 rated when covered or fully mated with the appropriate mating connector

5. Hardware shipped unassembled

6. Recommended M3 screw mounting torque: 8 to 10 lb-inch

7. Supplied with a cable tie



Directive 2002/95/EC RoHS Compliant

THIS DRAWING MAY NOT BE COPIED OR REPRODUCED IN ANY MANNER AND MAY NOT BE PASSED ON TO A THIRD PARTY WITHOUT WRITTEN PERMISSION. OWNERSHIP AND COPYRIGHT OF CONEC CORPORATION	Customer:			Tolerance Unless otherwise specified 0 PLC ±0.30 1 PLC ±0.20 2 PLC ±0.10 3 PLC ±0.05 ANGLES ±1°		Scale:	Dim. in mm
	Name	Title	Approval Date				
Rev.	Changes	Date	Name	Draw.	Date	Name	
b	1 x b	May/07/2013	Vincent Ke	Appd.	Nov. 22	J. Chaudry	
a	original			Norm			
				D-old			
DOT NOT ALTER CAD DRAWING BY HAND				CONEC®			
Material: See Notes						Cat. 5e RJ45 PCB Jack Version-III	
						Receptacle (with Flange) Assembly Kit	
						Nickel Plated Zinc Die-Cast Version	
Drawing No.: 17K1A384						DIN A3	
Part No.: SEE PART NUMBER TABLE						Sheet 1/1	

Description	Part Number
Nickel Plated Zinc Die-Cast with Cat5e RJ45 PCB Jack with Grounding Hole + a Cable Tie	17-111174
Potted Nickel Plated Zinc Die-Cast with Cat5e RJ45 Jack with Grounding Hole + a Cable Tie	17-111184