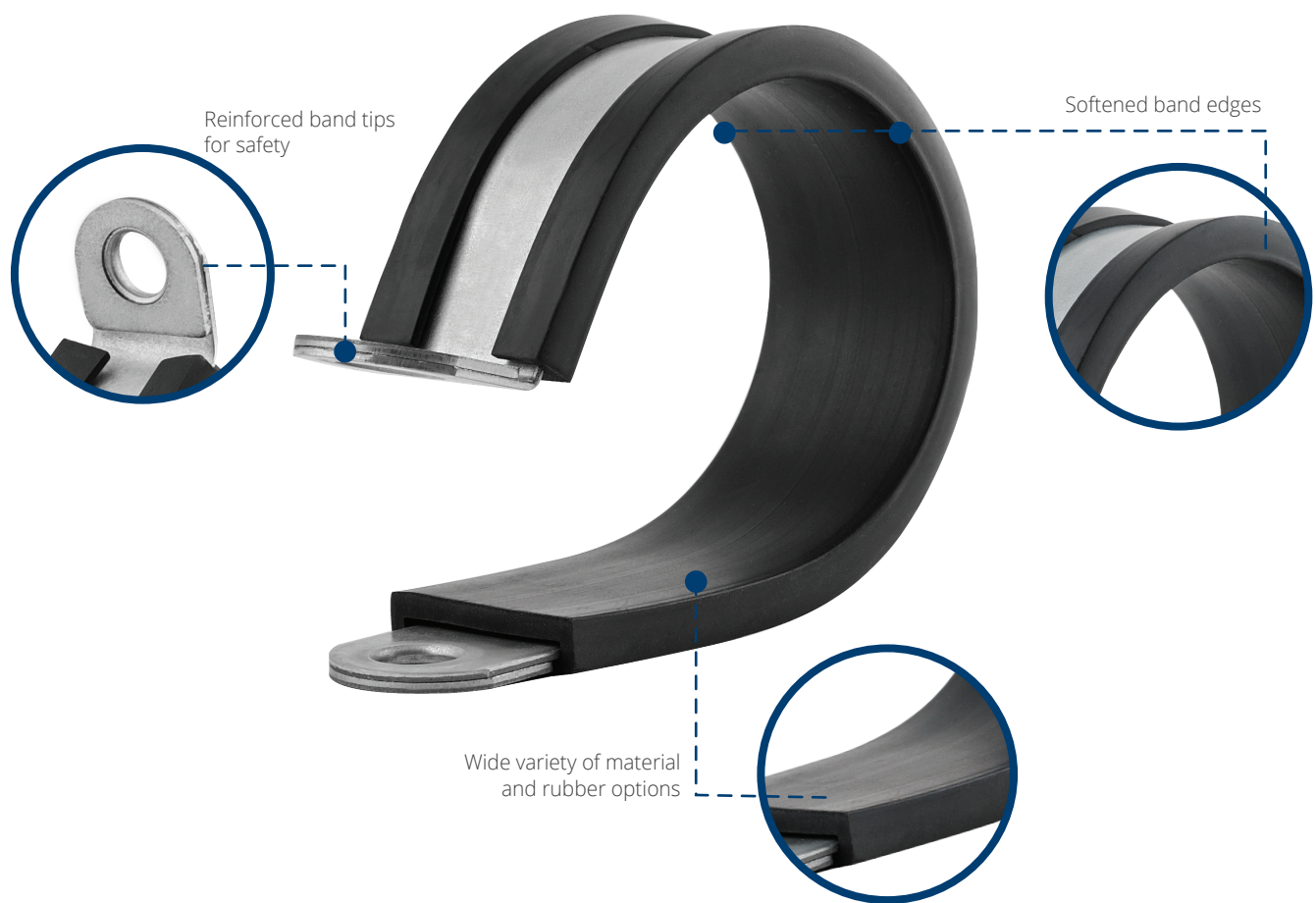
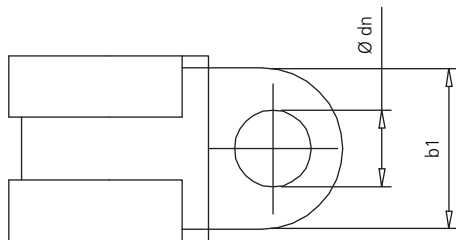
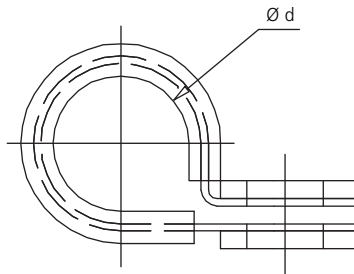




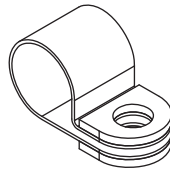
CC - Retaining Clamps



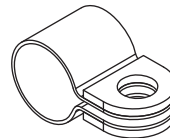
CC - Technical Properties



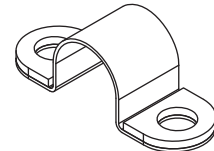
Tip A1



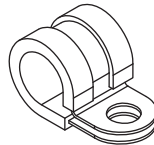
Tip B1



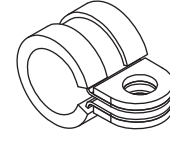
Tip C1



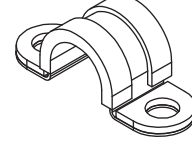
Tip D1



Tip E1



Tip F1



Rubber Type	CR	EPDM
Color	Black	Black
Temperature (C°)	- 35 - +100	- 40 - +120
Ozone Resistance	Very good	Very good
Light Resistance	Very good	Very good
Fuel Resistance	Sufficient	Insufficient
Oil Resistance	Good	Insufficient
Alcohol Resistance	Good	Good
Acid Resistance	Good	Good
Base Resistance	Good	Good

Ø D (mm)	b1= 12,0 mm dn= 5,3 mm	b1= 15,0 mm dn= 6,4 mm	b1= 20,0 mm dn= 8,4 mm	b1= 25,0 mm dn= 10,5 mm
4,0	-	-	-	-
5,0	●	●	-	-
6,0	●	●	-	-
7,0	●	●	-	-
8,0	●	●	-	-
9,0	●	●	-	-
10,0	●	●	●	-
11,0	●	●	●	-
12,0	●	●	●	-
13,0	●	●	●	-
14,0	●	●	●	-
15,0	●	●	●	●
16,0	●	●	●	●
17,0	●	●	●	●
18,0	●	●	●	●
19,0	●	●	●	●
20,0	●	●	●	●
.....
50,0	●	●	●	●

	W1	W3	W4	W5
Band	Mild Steel	1.4016 DIN EN-10088-2 or equivalent	1.4301 DIN EN-10088-2 or equivalent	1.4401 DIN EN-10088-2 or equivalent
Corrosion Resistance (min. Hour) ISO 9227	72	200*	240	400

* : %10 red rust allowed on the total surface of W3 products, after salt spray test