



Qoltec Module UPS DC for DIN rail | 40A | 24V

Product code: 50886

The DIN rail DC UPS module is a device that provides a reliable source of power in emergency situations. Designed specifically for DIN-rail mounting, this module integrates easily into an existing power supply system. It is ideal for professional installations that require uninterrupted operation in the event of a loss of mains power. In the case of a break or failure of the mains supply, the module automatically switches to battery power, which eliminates the need for manual intervention.

MODULE DC WITH UPS FUNCTION FOR DIN RAIL



Uninterruptible power supply for a wide variety of industries and technologies

The DIN rail UPS module from Qoltec is used in many industries and fields thanks to the reliability and ability to provide continuous power even in the event of power cuts. It is a useful component of industrial automation systems, machine control, telecommunications, alarm and monitoring systems, lighting technology and industrial electronics where the size of power supply devices and their adaptation to limited space is important.

FAULT-FREE POWER SUPPLY - STRENGTH IN STABILITY



Podtrzymanie źródła zasilania, funkcja UPS, automatyczne przełączanie na zasilanie bateryjne, pełna diagnostyka podłączonej baterii

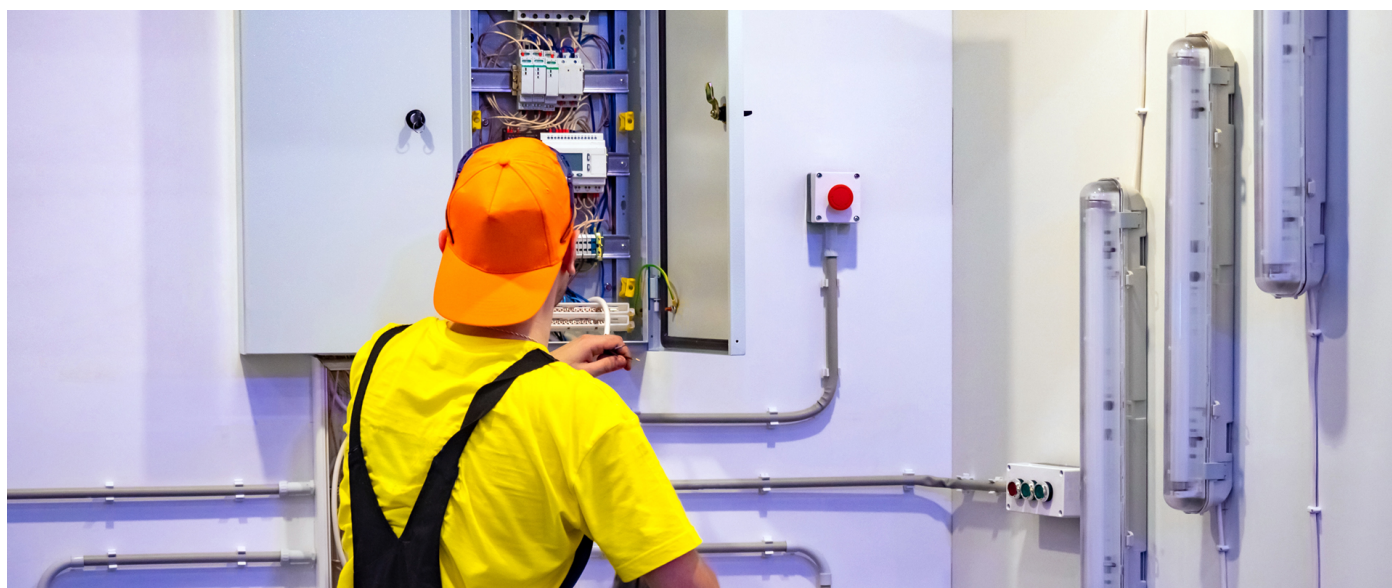
By connecting to a power supply and an external battery, the 40A DC UPS module enables power continuity to be maintained in emergency situations. Automatic switching to battery power is instantaneous, eliminating the risk of data loss, system failure or any other unwanted effect associated with loss of power. When mains power is restored, the UPS module reverts to battery charging mode, preparing the system for a possible next power outage. The operating time of the unit depends on the capacity of the connected battery, allowing customisation to meet individual system needs and requirements.

A POWER SUPPLY THAT WILL NEVER LET YOU DOWN



Designed for 24V systems with a load capacity of up to 40A The UPS module supports 24V systems and offers an impressive load capacity of up to 40A, making it ideal for a variety of applications. The right choice of power supply will ensure a reliable and safe power supply for your system. The UPS module also has a diagnostic function. If a battery abnormality is detected, the module uses an LED to warn of a fault (red LED) or a discharged battery (yellow LED).

RELIABLE AND SAFE POWER SUPPLY



Zastosowanie zaawansowanych zabezpieczeń

The DIN rail module is not only a source of reliable power, but also a device designed with safety and security of your system in mind. Manufactured from the highest quality materials to ensure you get a reliable power supply in any situation.

It offers a range of advanced safety features to ensure safe operation even in harsh conditions.

- overload protection
- overvoltage protection
- overheat protection
- over-discharge battery protection
- reverse polarity battery protection.

CONFIDENCE CONFIRMED BY A WARRANTY

Product with 24 months guarantee

Do you care about the high quality of the product you are buying? Our suggestions will meet your expectations. The module comes with a 24-month guarantee from the date of purchase.

TECHNICAL DATA

Producer	Qoltec
Type	Buffer
Input voltage	24VDC
Input Voltage Range	24-29VDC
Output voltage	40A
Output Voltage Range	24-30V
Frequency	50 ~ 60 Hz
Battery type	Lead-acid
Battery capacity	4AH~135AH
Battery voltage	24V
Charge current battery	2A
Efficiency	88%
Security	<ul style="list-style-type: none">- Overload protection,- Overvoltage protection,- Low battery cut-off- Reverse polarity protection
Type of assembly	TH35
IP rating	IP20
Working temperature	-30°C ~ +70°C
Storage temperature	-40 ~+85
Working humidity	5 ~ 95% RH (without condensation)
Storage humidity	5 ~ 95% RH (without condensation)
Color	Silver
Dimensions (D/L x W x H)	130 x 63 x 125mm
Package contents	1 x DIN rail module
Package depth / length [mm]	77
Package width [mm]	152
Package height [mm]	146
Net weight [kg]	0.432
Gross weight [kg]	0.474
Certifications	CE
Warranty	24 month
EAN code	5901878508863