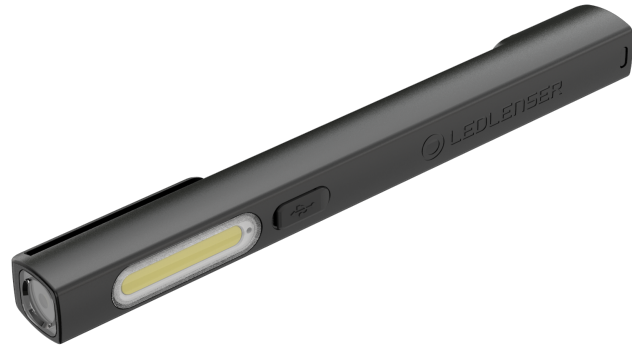




— PRODUCT DATA SHEET

W2R Work



W2R Work

PRODUCT DESCRIPTION

Precise light, always close at hand: The Ledlenser W2R Work is a rechargeable pen and test light for tradespeople, construction workers and anyone in need of a reliable light in miniature format. The superior Ledlenser light quality ensures precise illumination – either via wide-area flood light or via spot LED in the lamp head. The W2R Work can easily be attached to breast pockets using a clip. The powerful rechargeable battery can be charged quickly and easily via USB-C and can be replaced if necessary. Other clever features include a nubbed surface for a strong grip, a handy transport lock and a low battery warning function.

- Compact, rechargeable test light with two light sources for wide-area (flood) or spot illumination
- Premium light beam for precise illumination
- Robust plastic housing with non-slip surface structure and handy clip
- Service-replaceable li-ion battery; easily rechargeable via USB-C, with charge level indicator
- Transport lock prevents light from being accidentally turned on

TECHNICAL DATA

Width [mm]	17
Depth [mm]	24
Height [mm]	176
Weight incl. batteries [g]	61
Weight without batteries [g]	42
Focus function	No
Primary material	PC
Cartridge	No

POWER SUPPLY

Power source type	Rechargeable battery
Battery quantity	1
Battery type	Li-ion
Battery replaceable	Yes
Total battery voltage [V]	3.7
Total battery capacity [mAh]	630
Total battery energy ² [Wh]	2.331
Rechargeable	Yes
Charging time ⁵ [min]	150
Energy modes	Constant Light
Energy status indicator	Charge Indicator, Low Battery Warning

FURTHER SPECIFICATIONS

IP class	IP54
Drop test (drop height) [m]	1
IK Code [J]	7
Working temperature range [°C]	-20 to +40

LIGHT FUNCTIONS

Low Power, Mid Power, Power

LIGHT SOURCE

	COB	Spot
Amount LEDs	1	1
LED type	COB LED	Xtreme LED
Color	White	White
Color temperature [K]	6000 to 7500	6000 to 7500
Color rendering index (CRI)	70	70

LIGHT VALUES - COB

ANSI – Constant Light	Boost	Power	Mid Power	Low Power
Light output ¹ [lm]		220		60
Run time ¹ [h]		1.5		7

LIGHT VALUES - Spot

ANSI – Constant Light	Boost	Power	Mid Power	Low Power
Light output ¹ [lm]			100	
Beam distance ¹ [m]			60	
Run time ¹ [h]			3.5	

SWITCH

Front Switch

FEATURES

Transportation lock

W2R Work

PACKAGING AND LOGISTICS



PACKAGING INFORMATION

Type of packaging	Box
Scope of delivery	1 set of rechargeable batteries, USB cable
Item No.	502809
Customs tariff number	8513100000
Color	black
MSRP price (€)	34.90

SINGLE PACKAGE

Dimensions W x H x D [cm]	7.2 x 21 x 8.5
Gross weight [g]	200
GTIN-13	4058205032063

EXPORT CARTON

Unit	24
Dimensions W x D x H [cm]	45.5 x 29 x 34
Gross weight [kg]	5.6
GTIN-13	4058205032049

W2R Work

PRODUCT SERIES

Robust, versatile and rechargeable: The Ledlenser W-series work lights offer reliable professional light for workshops, construction sites or your next DIY project. From compact clip lights and convenient pen lights to flexible high-end lights: Outstanding Ledlenser light quality and numerous innovative features make the W-series work lights a must-have for every well-stocked tool box.

FOOTNOTES

The information pertaining to scope of delivery, appearance, performance, dimensions and weight corresponds to the information available at the time of publication. In the interest of product development, we reserve the right to change scope of delivery, appearance, design and color without prior notice. Product images may vary from the actual products and may show optional accessories which can be purchased separately. Errors and omissions excepted.

1) Measurement values according to ANSI FL1 in the respective setting. If no setting is explicitly indicated, the values refer to luminous flux (lumens/lm) and lighting range (meters/m) on the highest setting, and to battery duration (hours/h) on the lowest setting. A boost function (if available) can be used several times, but only for short periods of time. If the light is equipped with (a) colored LED(s), the measurement values are given for the white light or the white LED. If the light has different energy modes, the measurement is made based on the "energy saving mode".

2) Calculated capacity value in watt-hours (Wh). This applies to the delivery state of the battery/ies inside the respective item, or for lights with rechargeable battery/ies, to the rechargeable battery/ies inside the product when fully charged.

5) Charging time varies by hardware used.