

**SERIES:** CPS-4059X-X105PM | **DESCRIPTION:** SIREN**FEATURES**

- multiple tone options
- black or white case color
- mounting bracket
- 103 dB @ 1 m

**SPECIFICATIONS**

| parameter             | conditions/description                             | min | typ | max | units |
|-----------------------|--|-----|-----|-----|-------|
| rated voltage         |  |     | 24  |     | Vdc   |
| operating voltage     |  | 12  |     | 24  | Vdc   |
| current consumption   | at rated voltage                                   |     |     |     |       |
|                       | one tone model                                     |     |     | 80  | mA    |
|                       | six tone model                                     |     |     | 200 | mA    |
|                       | bibi tone model                                    |     |     | 80  | mA    |
|                       | melodic tone model                                 |     |     | 80  | mA    |
| sound pressure level  | at 1 m, rated voltage                              |     |     |     |       |
|                       | one tone model                                     | 103 |     |     | dB    |
|                       | six tone model                                     | 100 |     |     | dB    |
|                       | bibi tone model                                    | 100 |     |     | dB    |
|                       | melodic tone model                                 | 90  |     |     | dB    |
| tone                  | one tone, six tone, bibi tone, melodic tone models |     |     |     |       |
| dimensions            | 58 x 45 x 40                                       |     |     |     | mm    |
| weight                |  |     | 47  |     | g     |
| material              | ABS (black or white models)                        |     |     |     |       |
| terminal              | wire leads   |     |     |     |       |
| operating temperature |  | -20 |     | 85  | °C    |
| storage temperature   |  | -20 |     | 60  | °C    |
| RoHS                  | yes  |     |     |     |       |
| IP level              | IP44   |     |     |     |       |

**PART NUMBER KEY****CPS - 4059 X - X 105PM**

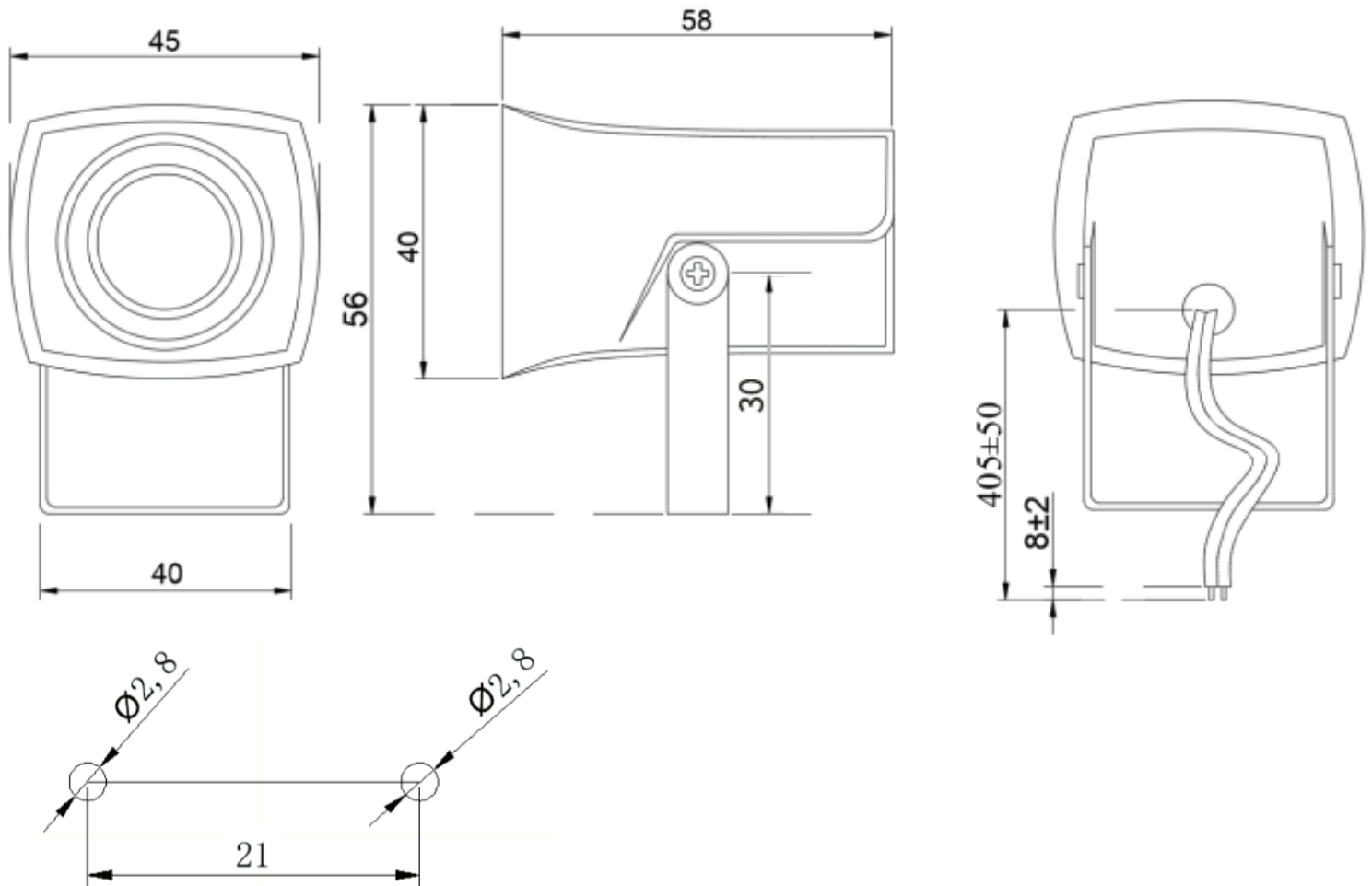
Base Number

Case Color Options:  
"blank" = black  
W = whiteTone Options:  
1 = one tone  
6 = six tone  
B = bibi tone  
M = melodic tone

## MECHANICAL DRAWING

units: mm  
tolerance:  $\pm 3$  mm

wire: UL 1007, 24 AWG



Recommended Mounting Hole Layout

REVISION HISTORY

| rev. | description                       | date       |
|------|-----------------------------------|------------|
| 1.0  | initial release                   | 11/09/2023 |
| 1.01 | CUI Devices rebranded to Same Sky | 09/11/2024 |

The revision history provided is for informational purposes only and is believed to be accurate.



Same Sky offers a one (1) year limited warranty. Complete warranty information is listed on our website.

Same Sky reserves the right to make changes to the product at any time without notice. Information provided by Same Sky is believed to be accurate and reliable. However, no responsibility is assumed by Same Sky for its use, nor for any infringements of patents or other rights of third parties which may result from its use.

Same Sky products are not authorized or warranted for use as critical components in equipment that requires an extremely high level of reliability. A critical component is any component of a life support device or system whose failure to perform can be reasonably expected to cause the failure of the life support device or system, or to affect its safety or effectiveness.

**sameskydevices.com**