


381166698	DATA SHEET	
Valid from: 03.09.2024	EPIC® SOLAR 4 GEN2 PANEL MOUNT MALE	

Beschreibung

- Low contact-resistance for efficient power transmission
- Crimp connection for field mounting
- Panel mount male connector incl. contact



General Characteristics

Series	EPIC® SOLAR 4 GEN2
Rated voltage	1500 V DC
Rated impulse voltage	16 kV
Contact	Male
Contact resistance	< 5 mOhm
Conductor cross section	4 mm ² , 6 mm ²
Outer diameter of cable	Ø 5,2 up to 7,0 mm
Flammability Class	UL94 V-0
Protection rate	IP68 (1m/1h)
Safety class	II
Temperature range	-40°C up to +85°C

Materials and Surfaces

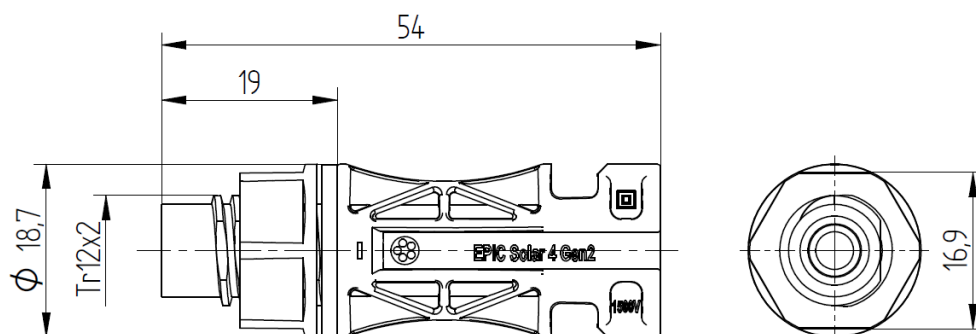
Insulating Body	Polyamide
Counter Nut	Polyamide
Contact	T2 Copper, tin plated
Seal	Silicone rubber

Conductor cross section [mm ²]	Max. permitted current [A]
4	40
6	50

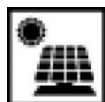
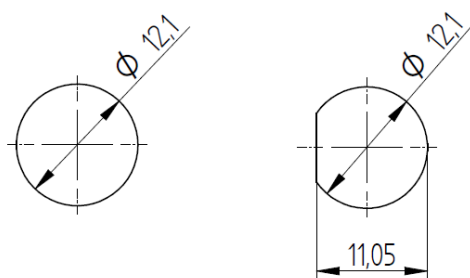
Creator: VACH1/BU EPIC Released: TODV1/BU EPIC	Document: DB381166698EN Version: 00	Page 1 of 2
---	--	-------------

381166698	DATA SHEET	
Valid from: 03.09.2024	EPIC® SOLAR 4 GEN2 PANEL MOUNT MALE	

Technical Drawings



Panel cutout



Solar Energy



UV-resistant



Waterproof

Info

4 mm connector system with double locking hook
Field-mountable solar connector

Application range

Photovoltaic plants
Crystalline and thin-film constructions
Solartracker

Product features

Inclusive contact

Remark

Photographs are not to scale and do not represent detailed images of the respective products.

Creator: VACH1/BU EPIC Released: TODV1/BU EPIC	Document: DB381166698EN Version: 00	Page 2 of 2
---	--	-------------