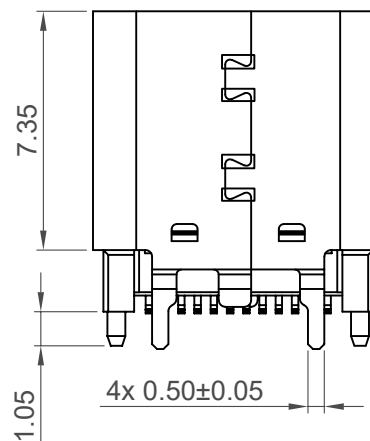
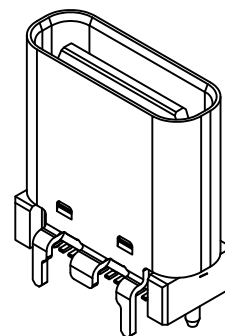


Section: A-A



Specifications

Material

Insulator: LCP, UL 94V-0, Black
Contact: Copper Alloy
Mid Plate: Stainless Steel
EMI Plate: Stainless Steel
Shell: Stainless Steel

Plating

Contact
Contact Area: See ordering grid
Solder Tails: Matte Tin over 50µ" min. Nickel
Shell: 30µ" min. Nickel
Mid Plate: Clear
EMI Plate: Clear

Electrical

Current Rating: 5.00A collectively for Vbus pins
6.25A collectively for GND pins
1.25A for A5/B5 pin
0.25A per pin for all other pins

Voltage Rating: 48V DC

Power Rating: 240W

Contact Resistance: 40mΩ max initial.
50mΩ max after test

Dielectric Withstanding Voltage: 100V AC
Insulation Resistance 100MΩ min

Mechanical & Environmental

Operating Temperature: -25°C to +85°C

Mating Force: 5 to 20 N.

Unmated Force: 6 to 20 N after test

Durability: 20,000 cycles

Ordering Grid

USB4115 - XX - C Request Samples and Quotation

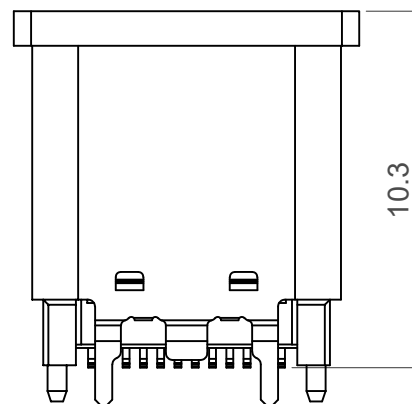
Contact Plating
03 = 3µ" Gold (Standard)
30 = 30µ" Gold

Packing Options
C = Tape & Reel with Cap
(450 per reel)

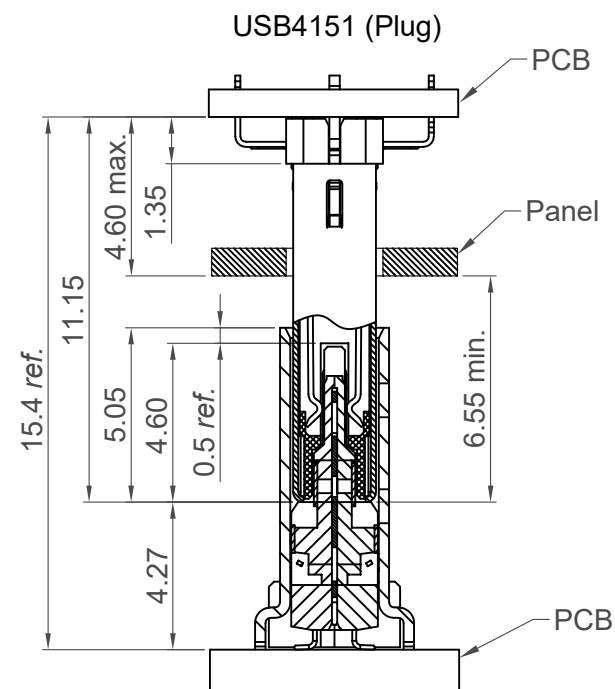
USB-IF TID NO. : 11254
IEC 62680-1-3:2022

GCT
www.gct.co

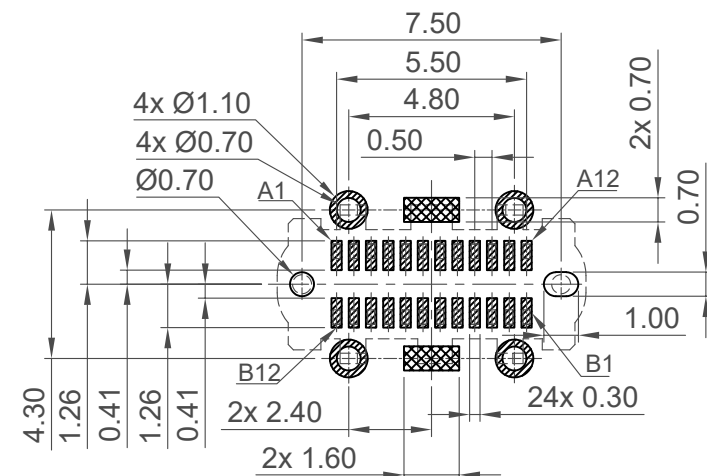
Part Number		Product Description	
USB4115		USB3.2 Gen2 Type C Receptacle, Vertical,	
Drawing Date		SMT, H=9.30mm	
28th September 2020			
By	KY	Tolerances (Except as Noted)	Units:
Detail	USB4115 B PCN	Length	Metric (mm)
Revision	B7	Angle	
Date	05/11/24	X.X ± 0.30	
		X.XX ± 0.25	
		X.XXX ± 0.10	
		This drawing is confidential and copyright of Global Connector Technology, Ltd (GCT). This drawing must not be copied or disclosed without written consent. E & OE	
		Not to Scale	Sheet No. 1/3



Cap Information



USB4115 (Receptacle)
Plug and Receptacle Mating View







Recommended PCB Layout

Thickness $1.20 \pm 0.10 \text{ mm}$

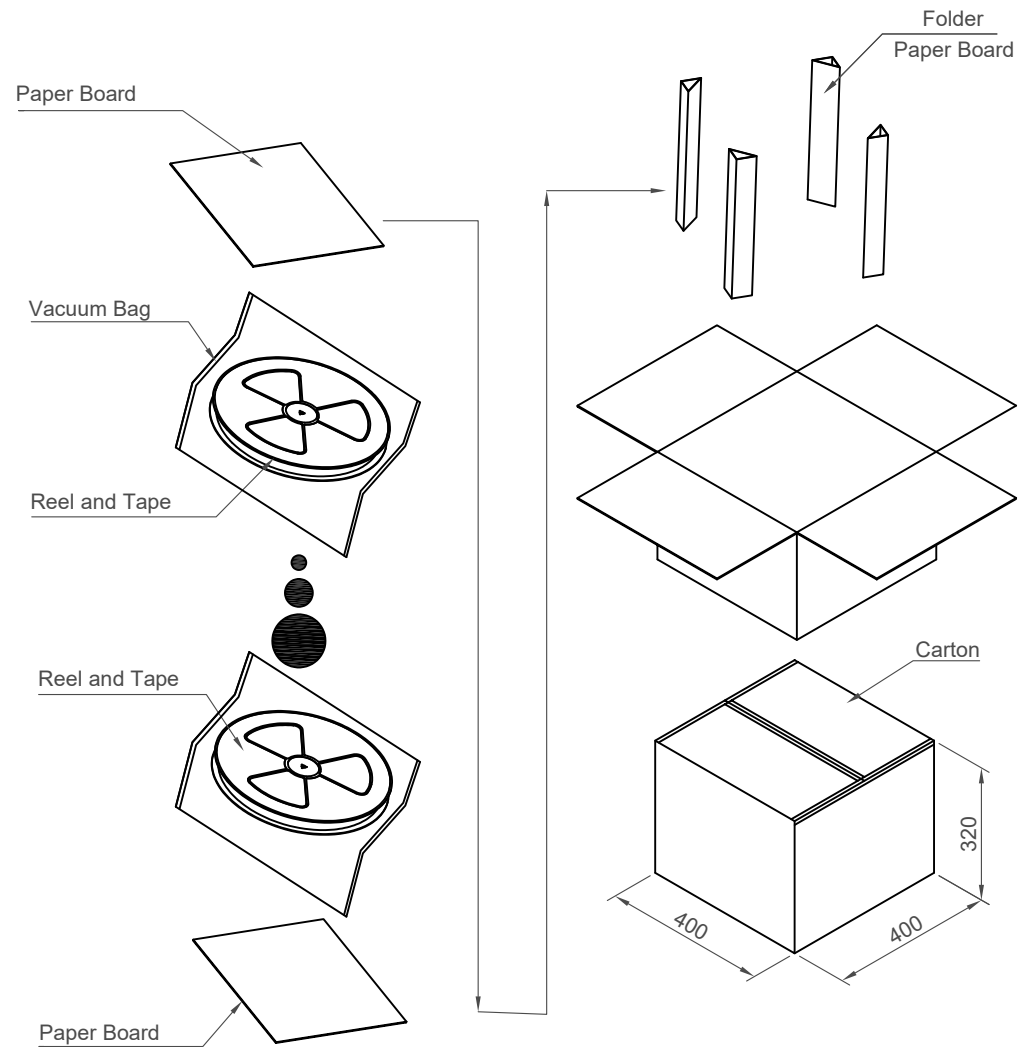
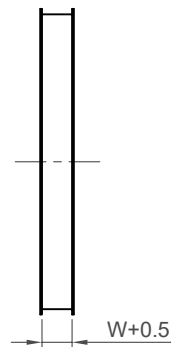
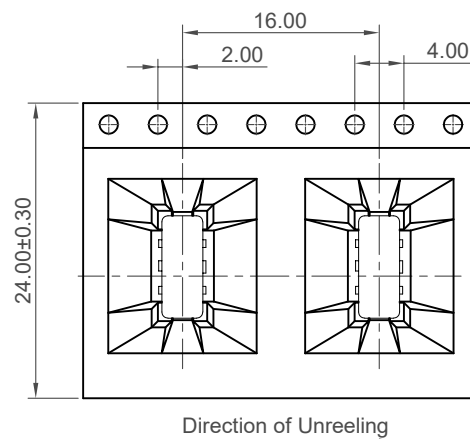
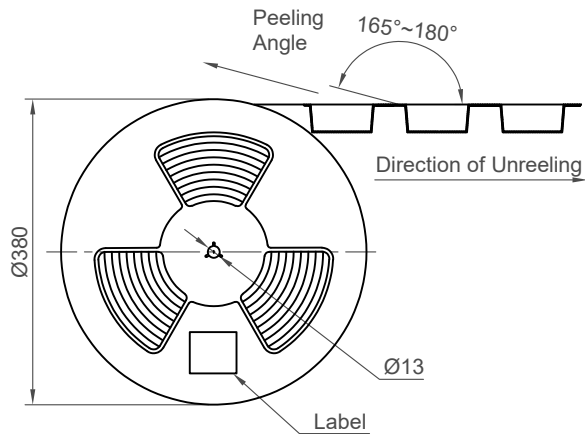
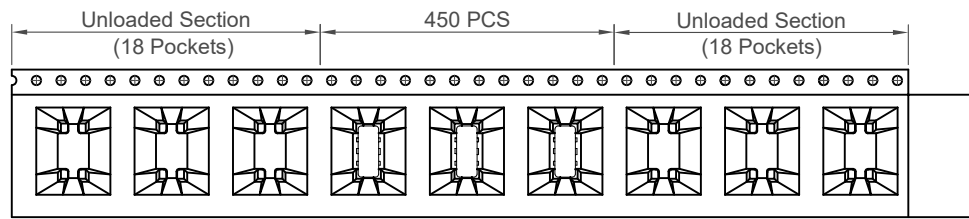
Tolerance: $\pm 0.05\text{mm}$

 Solder Area  Keep Out Area  Component Outline

Pin	Signal	Mating Sequence	Pin	Signal	Mating Sequence
A1	GND	First	B12	GND	First
A2	SSTXp1	Second	B11	SSRXp1	Second
A3	SSTXn1	Second	B10	SSRXn1	Second
A4	V _{BUS}	First	B9	V _{BUS}	First
A5	CC1	Second	B8	SBU2	Second
A6	Dp1	Second	B7	Dn2	Second
A7	Dn1	Second	B6	Dp2	Second
A8	SBU1	Second	B5	CC2	Second
A9	V _{BUS}	First	B4	V _{BUS}	First
A10	SSRXn2	Second	B3	SSTXn2	Second
A11	SSRXp2	Second	B2	SSTXp2	Second
A12	GND	First	B1	GND	First
SHELL		GND	SHELL		GND

Part Number		Product Description				<div> www.gct.co</div>			
USB4115		USB3.2 Gen2 Type C Receptacle, Vertical, SMT, H=9.30mm							
Drawing Date									
28th September 2020									
By	KY	Tolerances (Except as Noted)		Units:	<div> RoHS COMPLIANT 2011/65/EU REACH SVHC Dec-15</div>	<div></div> <div>This drawing is confidential and copyright of Global Connector Technology, Ltd (GCT). This drawing must not be copied or disclosed without written consent. E & OE</div>	Not to Scale	Drawn By CC	Sheet No. 2/3
Detail	USB4115 B PCN	Length	Angle	Metric (mm)					
Revision	B7	X.X ± 0.30	-	<div> 3rd Angle Projection</div>					
Date	05/11/24	X.XX ± 0.25							
		X.XXX ± 0.10							





Pcs / Reel	Reels / Carton	Total Quantity
450	10	4,500 pcs

Part Number		Product Description	
USB4115		USB3.2 Gen2 Type C Receptacle, Vertical,	
Drawing Date		SMT, H=9.30mm	
28th September 2020			
By	KY	Tolerances (Except as Noted)	Units:
Detail	USB4115	Length	Metric (mm)
Revision	B PCN	Angle	
Date	B7	X.X ± 0.30	
	05/11/24	X.XX ± 0.25	
		X.XXX ± 0.10	



This drawing is confidential and copyright of Global Connector Technology, Ltd (GCT). This drawing must not be copied or disclosed without written consent. E & OE

GCT
www.gct.co

Not to Scale
Drawn By CC
Sheet No. 3/3