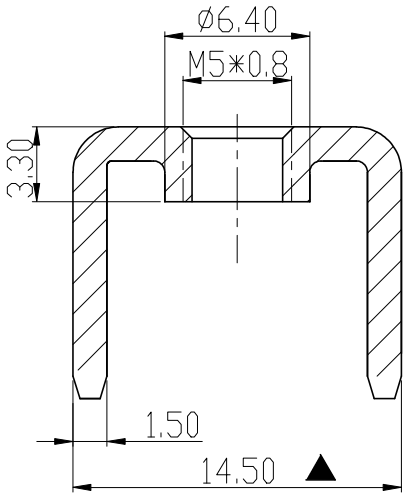
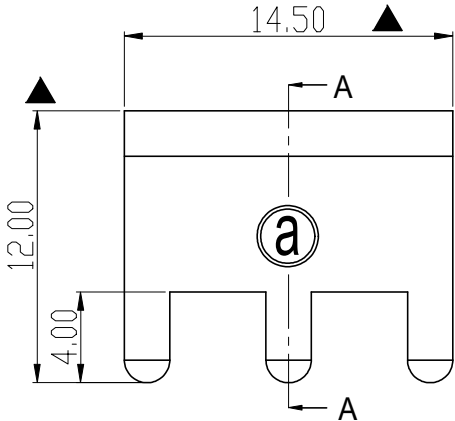


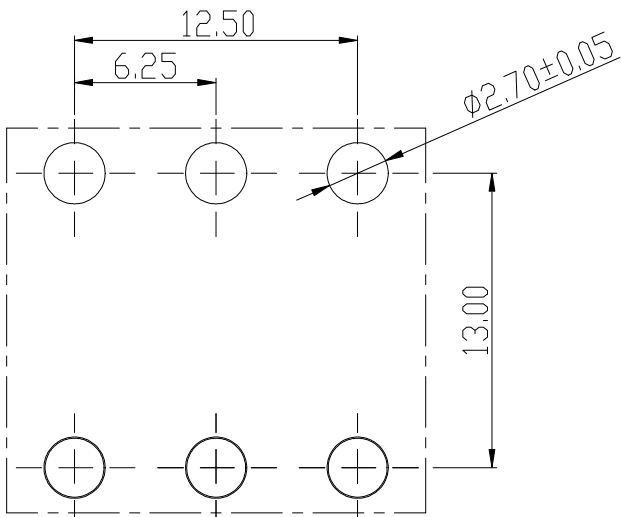
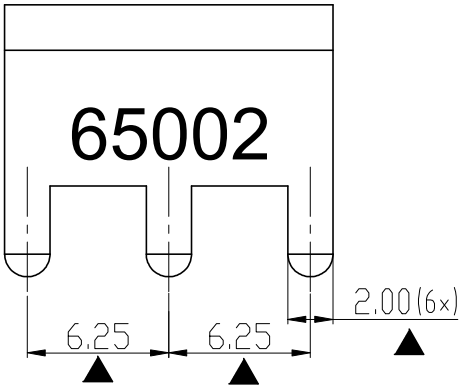
RoHS Compliant

Rev.	SIGN	DATE	DESCRIPTION	APPROVER
B	—	2024.05.16	The first release	Guoxue
THIS IS CAD DRAWING, DO NOT REVISE MANUALLY!!!				


- Technical Specification:
- 1. Material: Copper alloy ,Matte Tin Plated
 - 2. Current: 90A.
 - 3. Torque: 18 lbf.in.
 - 4.Mark "▲" is the Critical dimension.



SECTION A-A



PCB LAYOUT

<div>Amphenol</div> <div>ANYTEK</div>				<div>CUSTOMER COPY</div> <div>ALL RIGHTS RESERVED. REPRODUCTION OR ISSUE TO THIRD PARTIES IN ANY FORM WHATEVER IS NOT PERMITTED WITHOUT WRITTEN AUTHORITY FROM THE PROPRIETOR. PROPERTY OF ANYTEK TECHNOLOGY CO., LTD</div>			
TITLE		AMT65002 Conductive Bracket					
PART NO.		AMT0650002TH0000G		DWG NO.		8AMT0031	
APPROVED		CHECKED	DESIGNED	DRAWN	CUST NO.		Tolerance
		Guoxue 2024.05.16	Guoxue 2024.05.16	<div></div>		UNIT: mm	>30 ±0.60
						SCALE: NONE	6-30 ±0.40
							0-6 ±0.30
						SHEET: 01/01	REV.: B