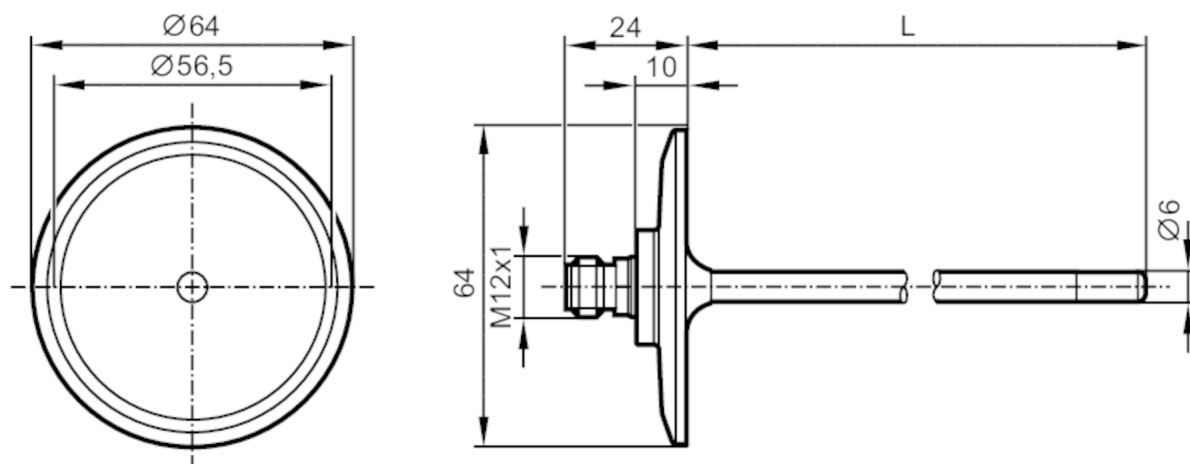




Temperature sensor with process connection

TM-030KFEC02-

/US/



L = probe length corresponds to installation length EL



EC 1935/2004 EHEDG Certified FCM FDA

Product characteristics

Measuring range	-40...150 °C	-40...302 °F
Process connection	Clamp DN50 (2") DIN 32676 (ISO 2852)	
Installation length EL [mm]	30	

Application

Special feature	Gold-plated contacts	
Measuring element	1 x Pt 100; (to DIN EN 60751, class A)	
Application	hygienic systems	
Media	liquids and gases	
Pressure rating [bar]	25	
Pressure rating [MPa]	2.5	
Minimum installation depth [mm]	15	

Electrical data

Protection class	III
------------------	-----

Measuring/setting range

Probe length L	[mm]	30	
Measuring range		-40...150 °C	-40...302 °F

Accuracy / deviations

Accuracy [K]	± (0,15 K + 0,002 x t)
--------------	-------------------------

Response times

Dynamic response T05 / T09 [s]	1 / 3; (to DIN EN 60751)
--------------------------------	--------------------------

Operating conditions

Ambient temperature [°C]	-25...80
Storage temperature [°C]	-40...100
Protection	IP 68; IP 69K

Tests / approvals

Shock resistance	DIN EN 60068-2-27	50 g (11 ms)
------------------	-------------------	--------------



Temperature sensor with process connection

TM-030KFEC02-

/US/

Vibration resistance	DIN EN 60068-2-6	10 g (10...2000 Hz)
MTTF [years]		22831

Mechanical data		
Weight [g]		228.5
Housing		cylindrical
Dimensions [mm]		Ø 64 / L = 54
Materials		stainless steel (316L/1.4404)
Materials (wetted parts)		stainless steel (316L/1.4404) electropolished
Process connection		Clamp DN50 (2") DIN 32676 (ISO 2852)
Surface characteristics Ra/Rz of the wetted parts		Ra: < 0.8
Probe diameter [mm]		6
Installation length EL [mm]		30

Remarks		
Remarks		operating voltage "supply class 2" according to cULus The values for accuracy apply to flowing water.
Pack quantity		1 pcs.

Electrical connection

Connector: 1 x M12; coding: A; Contacts: gold-plated



Connection

