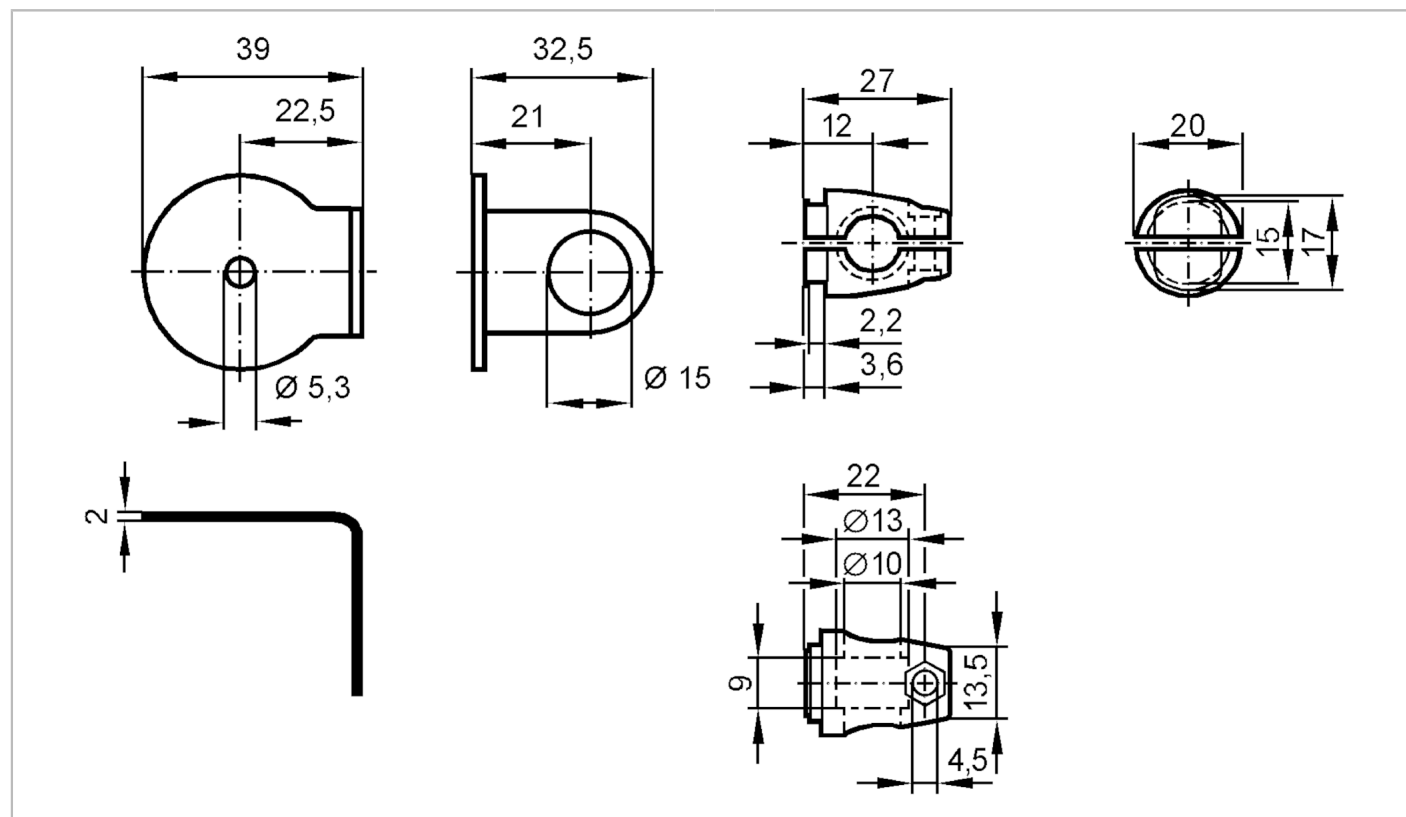


E20907



Mounting set for reflectors

SYSTEM COMPONENT REFL BOLT



Application

Design clamp mounting, for reflector, Ø 35 mm

Mechanical data

Weight [g] 102
Type of mounting free-standing; (M8)
Materials fixture: stainless steel (316Ti/1.4571); Clamp: stainless steel (1.4408)

Accessories

Items supplied screw: 1 x M8 x 40

Remarks

Pack quantity 1 pcs.