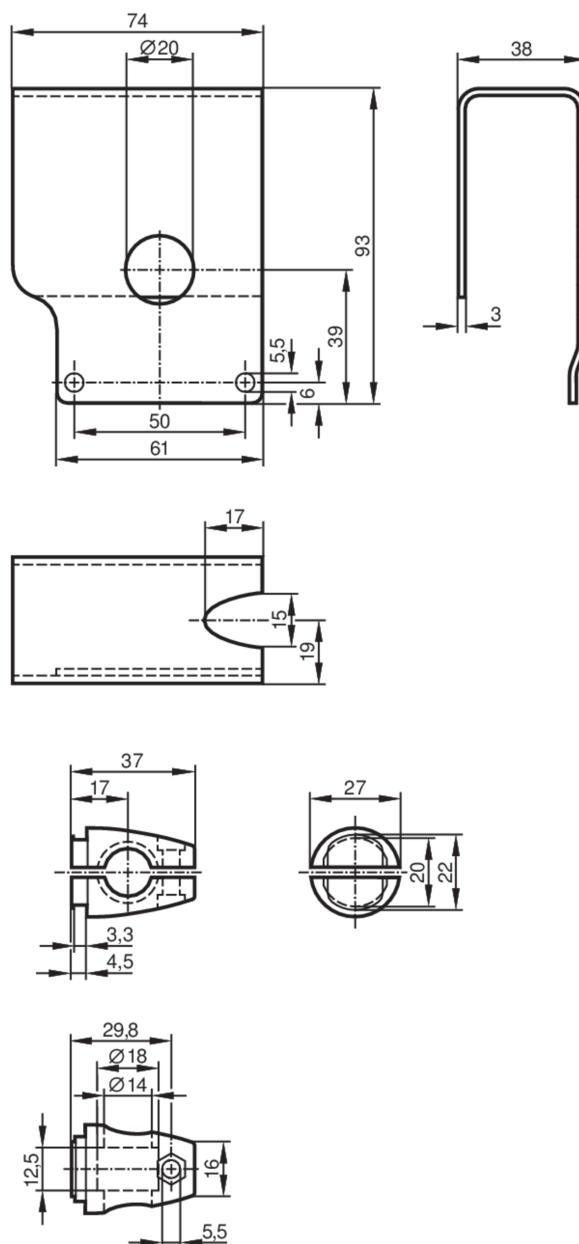


Mounting set with protective cover for photoelectric sensors

MOUNTING SET PROTECTIVE OL



Application

Design	clamp mounting, with protective cover
--------	---------------------------------------

Mechanical data

Weight	[g]	555
Type of mounting		free-standing; (M12)
Materials		fixture: stainless steel (303/1.4305); Clamp: diecast zinc

Accessories

Items supplied	screw: 1 x M12 x 120
----------------	----------------------

Remarks

Pack quantity	1 pcs.
---------------	--------