



Qoltec Anti Blue Light Filter 23" | 16:9 | Eye protection | Anti Glare | Matt | for screen

Product code: 51074

The Qoltec blue light filter protects your eyes from the negative effects of prolonged monitor use. Its main advantages are:

- reduction of exposure to blue light,
- anti-reflective coating,
- blockage of external light interference,
- improved work comfort by reducing eye strain,
- protection of vision,
- protection against scratches, dust, and dirt.

PEACEFUL NIGHTS AND HEALTHY EYES THANKS TO MONITOR FILTERS



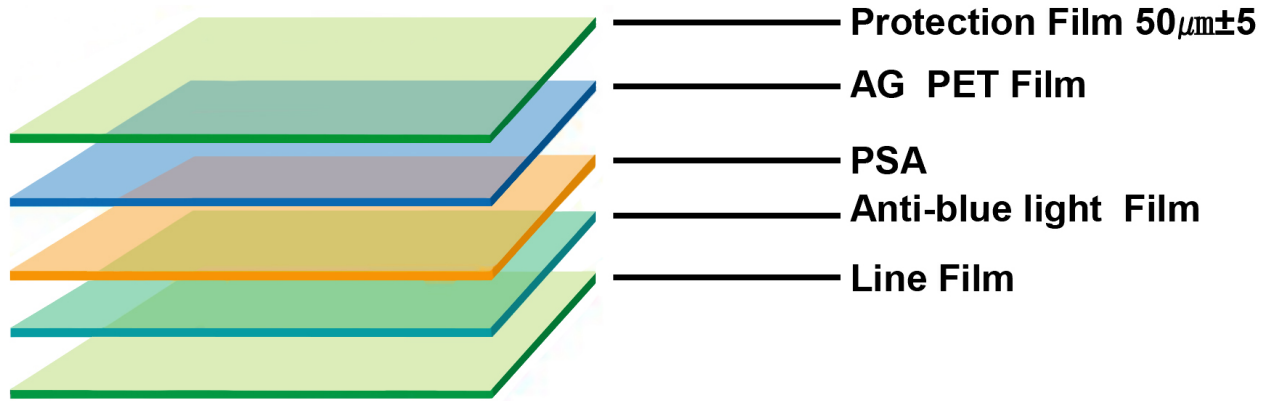
The matt blue light filter is the ideal solution for those spending a lot of time in front of a screen

Did you know that **excessive exposure to blue light** emitted by screens can **affect the quality of your sleep and eye health** ? Qoltec blue light filters are a stylish solution that can be easily mounted on your monitor or laptop, allowing you to enjoy technology without compromise.

Imagine an evening spent watching your favorite series or working on a creative project without worrying about eye strain. These practical and elegant accessories not only **protect your eyes** but also improve the comfort of daily computer use. Introduce **quality and health care** into your life with blue light filters – perfect for **modern, conscious** individuals.



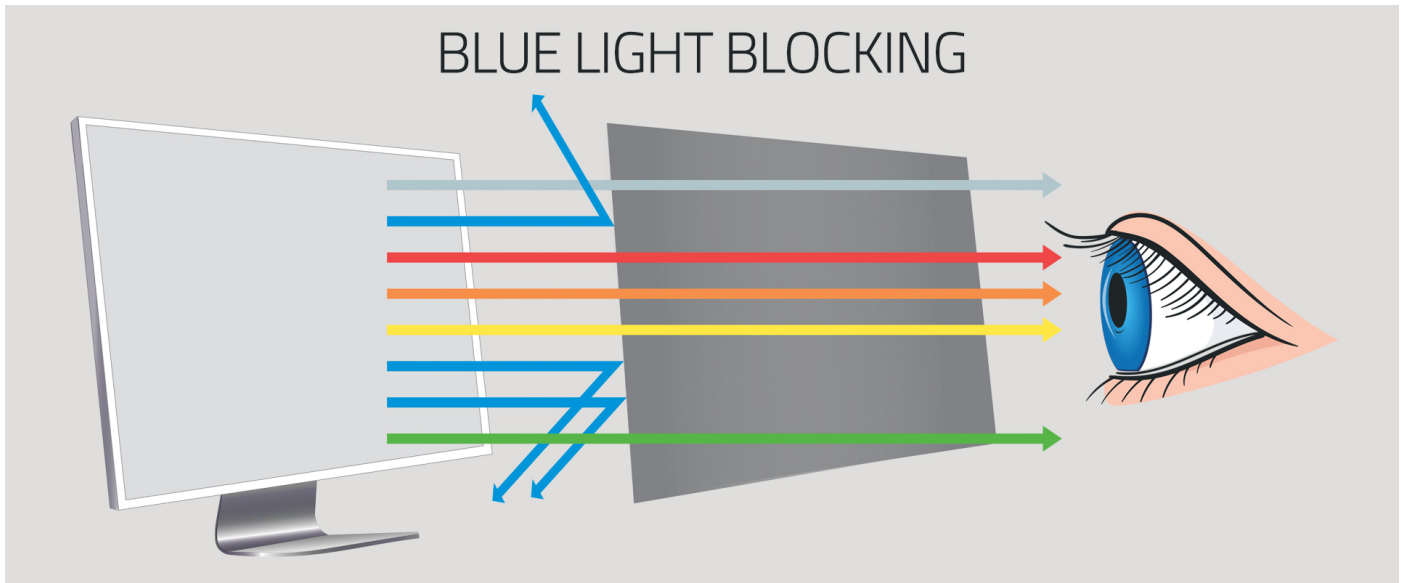
5-LAYER PROTECTION FOR YOUR VISION



The filter consists of 5 layers, including mainly the blockage of harmful radiation and blue light

For the Anti Blue Light filter to effectively perform its function, it must consist of the appropriate layers. The Qoltec filter includes all of them, ensuring that:

- **first** - it significantly **reduces the amount of blue light** reaching your eyes, reducing sleep problems and allowing extended computer use
- **second** - it **eliminates a large portion of UV rays** that are harmful to your vision
- **third** - it **protects your monitor** from dirt and scratches.



The matte Qoltec filter guarantees eye protection with Anti Blue Light and Anti-Glare functions

The blue light filter is a **protective shield for your vision**. Long-term use of a computer can be harmful to your eyes due to the radiation emitted by the screen. The Qoltec filter, with its **protection against harmful blue light**, limits this radiation. As a result, it protects your eyes, and sleep improves even after long hours in front of the screen.

Additionally, the Qoltec filter, thanks to its **anti-reflective properties**, significantly enhances the comfort of computer use by reducing eye strain and blocking interference caused by external light.



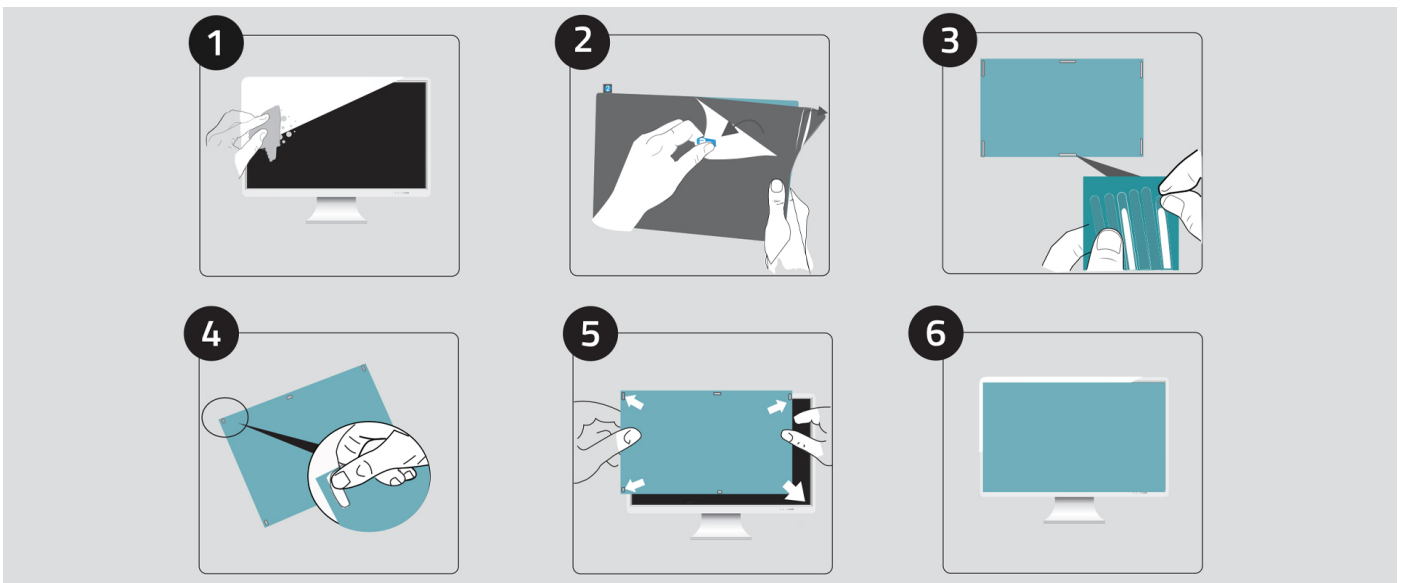
MATT FILTER – YOUR KEY TO COMFORTABLE COMPUTER WORK



The Anti Glare feature eliminates light reflections thanks to the matt surface of the filter

The **matte surface of the monitor filter** is an excellent solution that combines functionality with aesthetics. Primarily, **it eliminates reflections and light glare**, significantly improving work comfort, especially in bright rooms or under intense lighting. This reduces eye strain, leading to **greater productivity and better well-being** during prolonged computer use. Additionally, the matte surface **does not leave visible fingerprints**, keeping the screen impeccably clean and ensuring a clear, sharp image at all times.

DURABILITY AND EASE OF INSTALLATION



Ensuring Screen Protection with the Highest Quality Materials

Made from the highest quality LG material, the Qoltec filter additionally **protects your screen from dirt, scratches, and fingerprints**. This filter is not only functional but also practical. Thanks to its simple and quick installation, **you can easily install the filter on your device** by attaching the clips to the designated spots as per the instructions, and then securing the filter to the monitor screen.

TRUST CONFIRMED BY WARRANTY



Product covered by a 24-month warranty

Do you care about the high quality of the product you buy? Our solutions will meet your expectations. Each of our offered blue light filters is covered by a 24-month warranty from the date of purchase.

TECHNICAL DATA

Producer	Qoltec
Diagonal screen	23"
Screen proportions	16:9
Thickness	0.5mm
Other parameters	
Colour	Transparent
Material	PET
Dimensions (D/L x W x H)	509.17 x 286.41 x 0.5 mm
Package contents	1 x Blue light filter 1 x Mounting kit
Package depth / length [mm]	342
Package width [mm]	3
Package height [mm]	559
Net weight [kg]	0.2410
Gross weight [kg]	0.2560
Warranty	24 months
EAN code	5901878510743