

Illuminated pushbutton Ø 22 mm silver contact

82-6151.1114.B001



<https://eao.com/p/82-6151.1114.B001>

Your product:



82-6151.1114.B001
Illuminated pushbutton Ø
22 mm silver contact

FRONT

Front bezel shape:	flush
Front bezel material:	Stainless steel

MOUNTING

Mounting cut-out:	Ø 22 mm
-------------------	---------

OPERATING-/INDICATION PART

Lens optics:	opaque
Illumination colour:	Red
Lens colour:	Silver
Lens material:	Stainless steel
Lens illumination:	illuminative
Lens shape:	flush
Shape of illumination:	Ring

ELECTRICAL CHARACTERISTICS

Electric strength:	1500 VAC, 50 Hz 1 minute between life terminals and ground
Operating voltage:	24 V AC/DC
Rated Operational Voltage Ue:	250 VAC
Pollution degree:	2, according to EN IEC 60947-1
Contacts:	1 C
Thermal current Ith:	5 A

Switching voltage and switching current:

according to IEC 60947-5-1 (Silver contacts)		
Service categorie AC-15		
Voltage		Current
24 VAC		1 A
35 VAC		1 A (M12 versio
110 VAC		1 A
220 VAC		0.5 A
Switch rating DC service categorie DC-13 (Silver contacts)		
Voltage		Current
24 VDC		0.7 A
35 VDC		0.5 A (M12 vers
110 VDC		0.2 A
220 VDC		0.1 A

according to UL 508 (Silver contacts)

$\cos \phi$ 0,75 ... 0,8

Voltage	Current
120 VAC	5 A
240 VAC	3 A
24 VAC	1 A

Rated insulation voltage Ui:

250 V

Electrical lifetime:

50 000 cycles of operation

MECHANICAL CHARACTERISTIC**Operating force:**

4 N ... 7 N

Operating Travel:

ca. 3 mm

Terminal:

Soldering terminal, 2.8 x 0.5 mm

Mechanical lifetime:

1 Mio. cycles of operation

Contact material:

Silver

Weight:

0.018 kg

Switching system:

Snap-action switching element

Switching action:

Momentary

Tightening torque:

0.5 ... 0.6 Nm

AMBIENT CONDITION**Operating temperature:**

- 30 °C ... + 70 °C

Climate resistance:

Damp heat, 21 days according to IEC 60512-11

Storage temperature:

- 40 °C ... + 80 °C

Shock resistance:

Max. 500 m / s² as per IEC 60068-2-27

Vibration resistance:

10 ... 500 Hz, amplitude 1.5 mm p-p according to IEC 60068-2-6

CERTIFICATE

Approbations:

CB, CCC, C UL, UL

Conformities:

CE, 2011 / 65 / EC (RoHS), 2014 / 35 / EU (LVD)

OTHER

Symbol:

ON/OFF

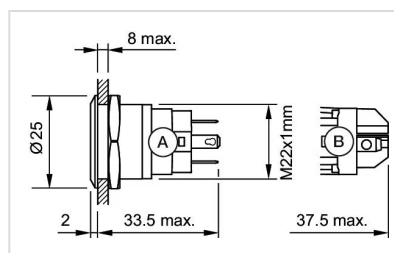
Short Description:

Illuminated pushbutton Ø 22 mm silver contact, Momentary, 24 V AC/DC, 1 C, Soldering terminal, 2.8 x 0.5 mm, Stainless steel, Red, ON/OFF, Silver

Kind of illumination:

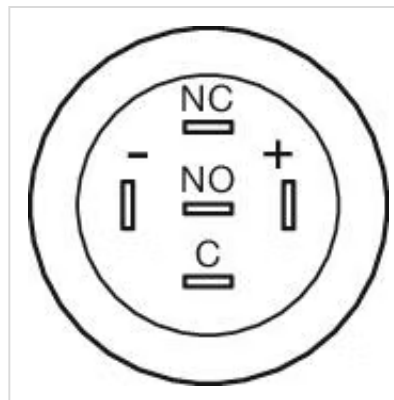
Single-LED

Dimension drawings:

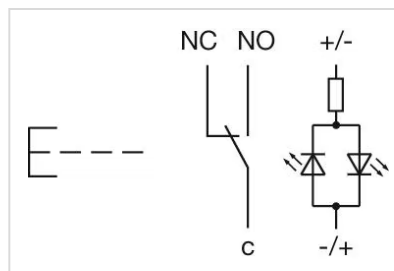


A = Solder terminal
B = Screw terminal

Component layouts:



Wiring diagrams:



Mounting cut-outs:

