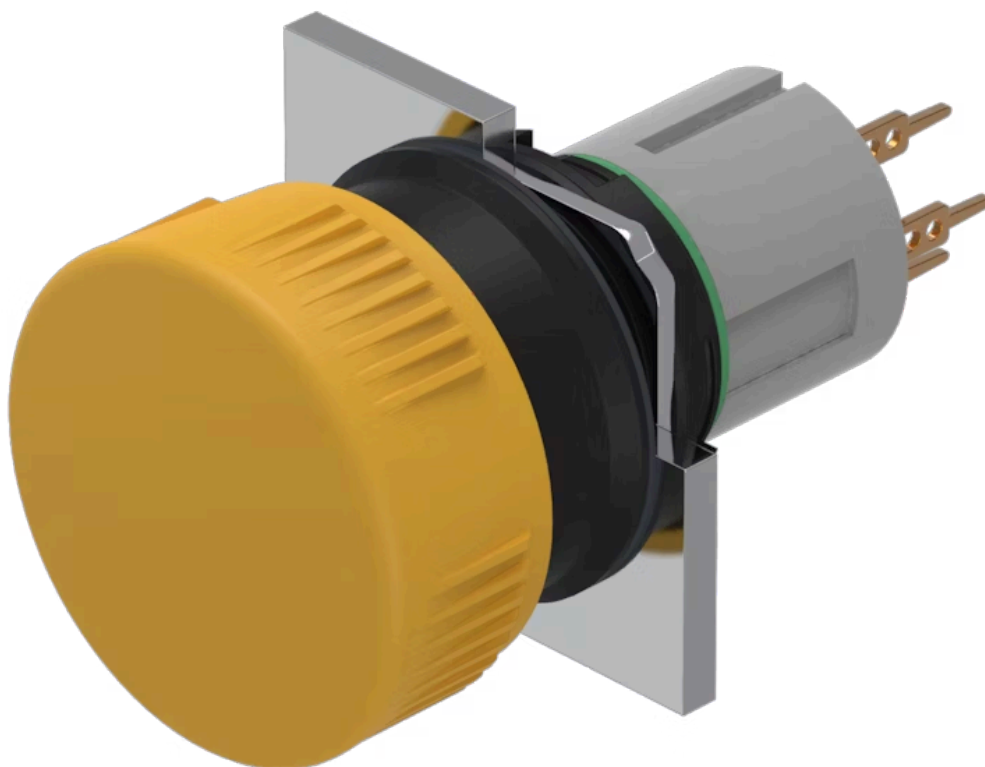


Actuator

51-
156.0264



<https://eao.com/p/51-156.0264>

Your product:



51-156.0264 Actuator

FRONT

Front dimension:	Ø 24,5 mm
Front bezel material:	Plastic
Front bezel colour:	Black

MOUNTING

Design:	raised
---------	--------

OPERATING-/INDICATION PART

Lens material:	Plastic
Lens optics:	opaque
Lens shape:	mushroom-head
Lens colour:	Yellow
Lens illumination:	non illuminative

ELECTRICAL CHARACTERISTICS

Electric strength:	2500 VAC, 50 Hz, 1 min. between all terminals and earth, according to IEC 61058-1, part 15
Contacts:	1 NC
Switching voltage and switching current:	100 mA at 42 VAC/VDC

MECHANICAL CHARACTERISTIC

Tightening torque:	Fixing nut max. 0.5 Nm
Mechanical lifetime:	

5 Mio. cycles of operation

Terminal: Universal terminal, 2 x 0.5 mm

Switching system: Low-level element

Weight: 0.008 kg

Operating force: 1,8 ... 3,5 N

Switching action: Momentary

Switching system: This low-level switching element was designed for switching low powers in electronic circuits. The mechanism assures reliable switching of loads ranging from a few $\mu\text{A}/\mu\text{V}$ up to 100 mA/ 42 VAC/DC. Single-break momentary contact, as normally open or normally closed with 4 independent points of contact. 2 momentary contacts per switching element; combination of normally open and normally closed is possible. Special features are the long life, extremely short rebound time and stable contact resistance.

Operating Travel: 3 mm

Contact material: Gold

AMBIENT CONDITION

IP front protection: IP65, according to DIN EN 60529

Shock resistance: 15 g for 11 ms, as per DIN / EN 60512-4-3, DIN / EN 60068-2-27 (Single impacts, semi-sinusoidal)

Operating temperature: - 25 °C ... + 55 °C

Storage temperature: - 40 °C ... + 85 °C

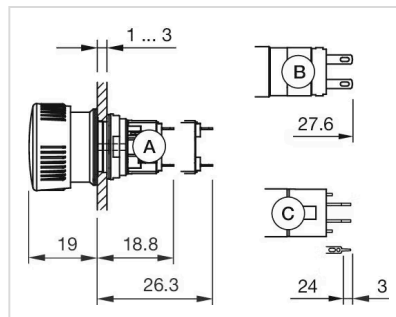
OTHER

Hints: If the anti-twist ring is not used the panel thickness increases to 4 mm

Housing colour: Black

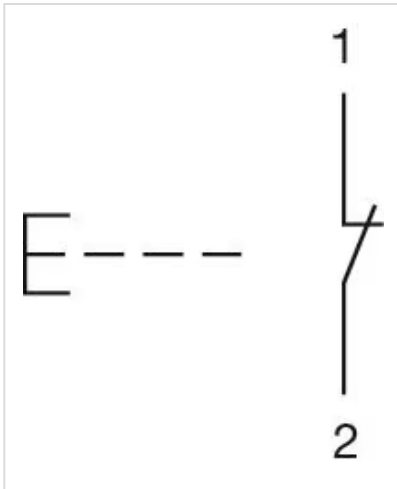
Short Description: Actuator, Ø 24,5 mm, mushroom-head, non illuminative, Yellow, Plastic, opaque, Black, Plastic, 1 NC, Momentary, Universal terminal, 2 x 0.5 mm, IP65, according to DIN EN 60529

Dimension drawings:



A = Solder terminal
B = Plug-in terminal 2.8 mm x 0.5 mm
C = Universal terminal 2.0 mm x 0.5 mm

Wiring diagrams:



Mounting cut-outs:

