

Manual test fixture

MA 2113/D/H/S-10

Item 32500



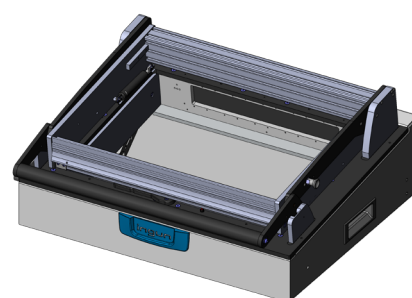
GO TO PRODUCT

ingun[®]

Partner for Future Technology

- Manual test fixtures with parallel closing drive mechanism for testing medium PCB quantities with the highest quality and precision
- Interchangeable test fixtures with and without pre-configured test system interface
- Standard, ESD, and RF exchangeable kits that can be installed without tools and used without readjustment
- Modularly configurable signal transmission using interface blocks, which can be quickly detached
- Detailed accompanying documents (e.g., customising guidelines)

INGUN SELECTION



General data

Product group:	Manual test fixtures (MA)
Main series:	MA xxxx
Subseries:	MA 21xx
Series:	MA 2113
Size:	xx13
Test fixture type:	Exchangeable test fixture
Contact stroke generation:	Manual
Housing type:	Desk housing
Max. interface signals:	1700
Interface blocks required:	Test system side
Max. internal interface blocks:	10
Contacting direction:	Single-sided (bottom)
Max. contact force:	2.000 N [7.19 ozf]
Approx. parallel contact stroke:	15 mm [.590 in]
Test system interface:	Not pre-wired
Weight:	15.4 kg [33.9 lbs]
Min. temperature:	+ 10 °C [+ 50 °F]
Max. temperature:	+ 60 °C [+ 140 °F]
Low voltage:	Yes, with suitable additional option
ESD-compliant:	Yes, with suitable exchangeable kit
RoHS-compliant:	RoHS-3;6c

Technical data

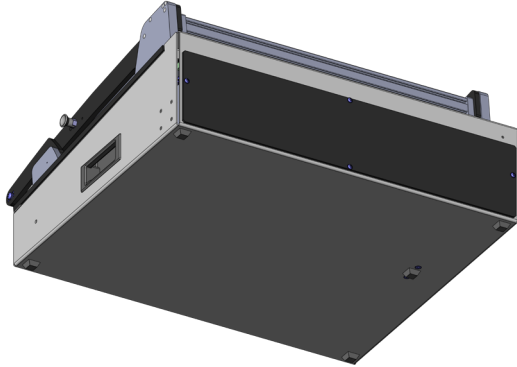
Test probe installation height, top:	16 mm [.629 in]
Test probe installation height, bottom:	10.5 mm [.413 in]
Test probe installation height, dual-stage, bottom:	16 mm [.629 in]
Free space above PCB:	58 mm [2.28 in]
Force of gas pressure springs:	400 N (L: 200 N / R: 200 N)
Pressure frame opening angle:	75 °
Standard version:	Yes, with suitable exchangeable kit
Useable area, standard (WxD):	440 x 310 mm [17.3 x 12.2 in]
ESD version:	Yes, with suitable exchangeable kit
Useable area, ESD (WxD):	440 x 310 mm [17.3 x 12.2 in]
Radio frequency version:	Yes, with suitable exchangeable kit
Useable area, radio frequency (WxD):	375 x 240 mm [14.7 x 9.44 in]
Rigid pin version:	No
Dual-stage version:	Yes, with suitable additional option
Useable area, dual-stage (WxD):	440 x 310 mm [17.3 x 12.2 in]
Additional contacting unit (ZSK), top:	Yes, with suitable additional option
Outer dimensions, open (WxDxH):	648 x 533 x 657 mm [20.9 x 25.8 in]
Outer dimensions, closed (WxDxH):	648 x 584 x 270 mm [22.9 x 10.6 in]

Manual test fixture **MA 2113/D/H/S-10**

Item 32500



ingun[®]
Partner for Future Technology



INGUN Prüfmittelbau GmbH

Max-Stromeyer-Straße 162
78467, Constance, Germany
Phone +49 7531 8105-0
Customer hotline +49 7531 8105-888
Fax +49 7531 8105-65
info@ingun.com



Prices and delivery times on request.
Technical changes reserved. 07/24_GB