

# Manual test fixture

## MA 2111/D/H/S-5

Item 31730



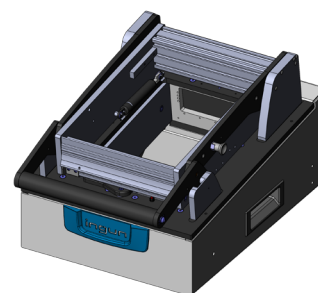
GO TO PRODUCT

**ingun**<sup>®</sup>

Partner for Future Technology

- Manual test fixtures with parallel closing drive mechanism for testing medium PCB quantities with the highest quality and precision
- Interchangeable test fixtures with and without pre-configured test system interface
- Standard, ESD, and RF exchangeable kits that can be installed without tools and used without readjustment
- Modularly configurable signal transmission using interface blocks, which can be quickly detached
- Detailed accompanying documents (e.g., customising guidelines)

### INGUN SELECTION



#### General data

Product group:	Manual test fixtures (MA)
Main series:	MA xxxx
Subseries:	MA 21xx
Series:	MA 2111
Size:	xx11
Test fixture type:	Exchangeable test fixture
Contact stroke generation:	Manual
Housing type:	Desk housing
Max. interface signals:	850
Interface blocks required:	Test system side
Max. internal interface blocks:	5
Contacting direction:	Single-sided (bottom)
Max. contact force:	2.000 N [7.19 ozf]
Approx. parallel contact stroke:	15 mm [.590 in]
Test system interface:	Not pre-wired
Weight:	9.3 kg [20.5 lbs]
Min. temperature:	+ 10 °C [+ 50 °F]
Max. temperature:	+ 60 °C [+ 140 °F]
Low voltage:	Yes, with suitable additional option
ESD-compliant:	Yes, with suitable exchangeable kit
RoHS-compliant:	RoHS-3;6c

#### Technical data

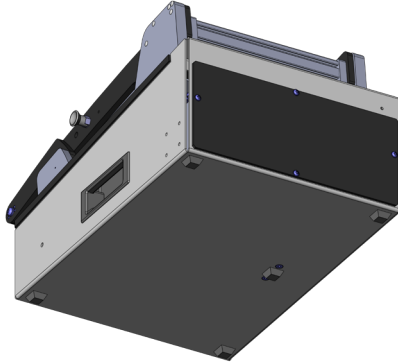
Test probe installation height, top:	16 mm [.629 in]
Test probe installation height, bottom:	10.5 mm [.413 in]
Test probe installation height, dual-stage, bottom:	16 mm [.629 in]
Free space above PCB:	58 mm [2.28 in]
Force of gas pressure springs:	200 N (L: 100 N / R: 100 N)
Pressure frame opening angle:	75 °
Standard version:	Yes, with suitable exchangeable kit
Useable area, standard (WxD):	150 x 240 mm [5.90 x 9.44 in]
ESD version:	Yes, with suitable exchangeable kit
Useable area, ESD (WxD):	150 x 240 mm [5.90 x 9.44 in]
Radio frequency version:	Yes, with suitable exchangeable kit
Useable area, radio frequency (WxD):	100 x 160 mm [3.93 x 6.29 in]
Rigid pin version:	No
Dual-stage version:	Yes, with suitable additional option
Useable area, dual-stage (WxD):	150 x 240 mm [5.90 x 9.44 in]
Additional contacting unit (ZSK), top:	Yes, with suitable additional option
Outer dimensions, open (WxDxH):	320 x 463 x 583 mm [18.2 x 22.9 in]
Outer dimensions, closed (WxDxH):	320 x 515 x 270 mm [20.2 x 10.6 in]

# Manual test fixture **MA 2111/D/H/S-5**

Item 31730



**ingun**<sup>®</sup>  
Partner for Future Technology



## **INGUN** Prüfmittelbau GmbH

Max-Stromeyer-Straße 162  
78467, Constance, Germany  
Phone +49 7531 8105-0  
Customer hotline +49 7531 8105-888  
Fax +49 7531 8105-65  
[info@ingun.com](mailto:info@ingun.com)



Prices and delivery times on request.  
Technical changes reserved. 07/24\_GB