

Illuminated pushbutton Ø 22 mm stainless steel 304, with
symbol

82-6151.1A54.B015



<https://eao.com/p/82-6151.1A54.B015>

Your product:



82-6151.1A54.B015

Illuminated pushbutton Ø 22 mm
stainless steel 304, with symbol

FRONT

Front bezel material: Stainless steel

MOUNTING

Mounting cut-out: Ø 22 mm

OPERATING-/INDICATION PART

Shape of illumination: Symbol

Lens colour: Silver

Lens illumination: illuminative

Lens shape: flush

Lens material: Plastic metalised

Lens optics: opaque

Illumination colour: White

ELECTRICAL CHARACTERISTICS

Operating voltage: 24 V DC

Rated insulation voltage U_i : 250 V

Switching voltage and switching current:

according to IEC 60947-5-1 (Silver contacts)	
Service categorie AC-15	
Voltage	Current
24 VAC	1 A
35 VAC	1 A (M12 version)
110 VAC	1 A
220 VAC	0.5 A
Switch rating DC service categorie DC-13 (Silver contacts)	
Voltage	Current
24 VDC	0.7 A
35 VDC	0.5 A (M12 version)
110 VDC	0.2 A
220 VDC	0.1 A

according to UL 508 (Silver contacts)	
cosφ 0,75 ... 0,8	
Voltage	Current
120 VAC	5 A
240 VAC	3 A
24 VAC	1 A

Rated Operational Voltage Ue:	250 VAC
Electric strength:	1500 VAC, 50 Hz 1 minute between life terminals and ground
Contacts:	1 C
Thermal current Ith:	5 A
Electrical lifetime:	50 000 cycles of operation
Pollution degree:	2, according to EN IEC 60947-1

MECHANICAL CHARATERISTIC

Switching system:	Snap-action switching element
Tightening torque:	0.5 ... 0.6 Nm
Operating force:	4 N ... 7 N
Mechanical lifetime:	1 Mio. cycles of operation
Operating Travel:	ca. 3 mm
Switching action:	Momentary
Weight:	0.025 kg
Terminal:	Soldering terminal, 2.8 x 0.5 mm
Contact material:	Silver

AMBIENT CONDITION

Storage temperature:	– 40 °C ... + 80 °C
Operating temperature:	– 30 °C ... + 70 °C
Vibration resistance:	

10 ... 500 Hz, amplitude 1.5 mm p-p according to IEC 60068-2-6

Shock resistance: Max. 500 m / s² as per IEC 60068-2-27

Climate resistance: Damp heat, 21 days according to IEC 60512-11

CERTIFICATE

Approbations: CB, CCC, C UL, UL

Conformities: CE, 2011 / 65 / EC (RoHS), 2014 / 35 / EU (LVD)

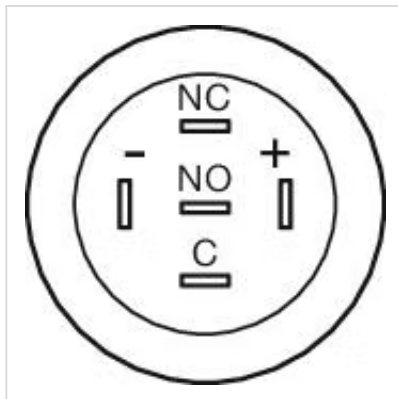
OTHER

Short Description: Illuminated pushbutton Ø 22 mm stainless steel 304, with symbol, Momentary, 24 V DC, 1 C, Soldering terminal, 2.8 x 0.5 mm, Stainless steel, White, SOS, Silver

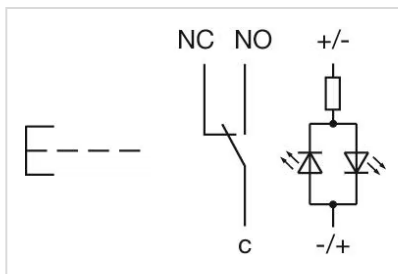
Kind of illumination: Single-LED

Symbol: SOS

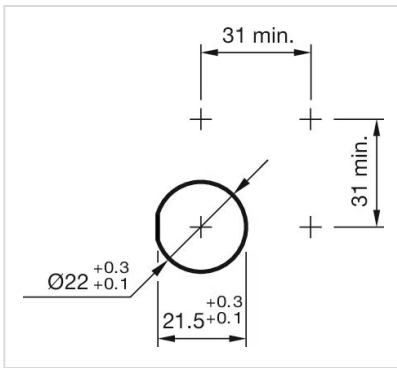
Component layouts:



Wiring diagrams:



Mounting cut-outs:



Dimension drawings:

