

FL SWITCH SFNB 5TX - Industrial Ethernet Switch



2891001

<https://www.phoenixcontact.com/gb/products/2891001>

Please be informed that the data shown in this PDF document is generated from our online catalog. Please find the complete data in the user documentation. Our general terms of use for downloads are valid.



Ethernet switch, 5 TP RJ45 ports, automatic detection of data transmission speed of 10 or 100 Mbps (RJ45), autocrossing function

Your advantages

- RJ45 ports support a transmission speed of 10/100 Mbps
- Local diagnostic indicators with LEDs
- Auto negotiation and autocrossing detection simplifies installation and setup

Commercial data

| | |
|--------------------------------------|---------------------|
| Item number | 2891001 |
| Packing unit | 1 pc |
| Minimum order quantity | 1 pc |
| Sales key | DNN113 |
| Product key | DNN113 |
| Catalog page | Page 288 (C-6-2019) |
| GTIN | 4046356457163 |
| Weight per piece (including packing) | 272.8 g |
| Weight per piece (excluding packing) | 263 g |
| Customs tariff number | 85176200 |
| Country of origin | TW |

FL SWITCH SFNB 5TX - Industrial Ethernet Switch



2891001

<https://www.phoenixcontact.com/gb/products/2891001>

Technical data

Dimensions

| | |
|--------|--------|
| Width | 28 mm |
| Height | 110 mm |
| Depth | 70 mm |

Material specifications

| | |
|------------------|----------|
| Housing material | Aluminum |
|------------------|----------|

Mounting

| | |
|---------------|-------------------|
| Mounting type | DIN rail mounting |
|---------------|-------------------|

Interfaces

| | |
|-------------------------------|-----------------------------------|
| Ethernet (RJ45) | |
| Connection method | RJ45 |
| Note on the connection method | Auto negotiation and autocrossing |
| Transmission speed | 10/100 Mbps |
| Transmission physics | Ethernet in RJ45 twisted pair |
| Transmission length | 100 m (per segment) |
| Signal LEDs | Data receive, link status |
| No. of channels | 5 (RJ45 ports) |

Product properties

| | |
|----------------|--|
| Product type | Switch |
| Product family | Unmanaged Switch SFNB |
| Type | Block design |
| MTTF | 173.5 Years (MIL-HDBK-217F standard, temperature 25°C, operating cycle 100%) |

Switch functions

| | |
|----------------------------------|---|
| Basic functions | Unmanaged switch / auto negotiation, complies with IEEE 802.3, store and forward switching mode |
| MAC address table | 1k |
| Status and diagnostic indicators | LEDs: U _S , link and activity per port |
| Additional functions | Autonegotiation |

Security functions

| | |
|-----------------|---|
| Basic functions | Unmanaged switch / auto negotiation, complies with IEEE 802.3, store and forward switching mode |
|-----------------|---|

Electrical properties

| | |
|-------------------|---|
| Local diagnostics | US Supply voltage Green LED |
| | LNK/ACT Link status/data transmission Green LED |
| | 100 Data transmission speed Yellow LED |

FL SWITCH SFNB 5TX - Industrial Ethernet Switch



2891001

<https://www.phoenixcontact.com/gb/products/2891001>

| | |
|---|--------|
| Maximum power dissipation for nominal condition | 4.44 W |
| Transmission medium | Copper |

Supply

| | |
|-----------------------------|--|
| Supply voltage (DC) | 24 V DC |
| Supply voltage range | 12 V DC ... 48 V DC |
| Power supply connection | Via COMBICON, max. conductor cross section 2.5 mm ² |
| Residual ripple | 3.6 V _{PP} (within the permitted voltage range) |
| Max. current consumption | 345 mA (at 12 V DC) |
| Typical current consumption | 185 mA (at U _S = 24 V DC) |

Connection data

| | |
|-----------------------------------|---|
| Connection method | Screw connection |
| Conductor cross section, rigid | 0.2 mm ² ... 2.5 mm ² |
| Conductor cross section, flexible | 0.2 mm ² ... 2.5 mm ² |
| Conductor cross section AWG | 30 ... 12 |
| Stripping length | 7 mm |

Environmental and real-life conditions

Ambient conditions

| | |
|--|---|
| Degree of protection | IP20 |
| Ambient temperature (operation) | -10 °C ... 60 °C |
| Ambient temperature (storage/transport) | -20 °C ... 85 °C |
| Permissible humidity (operation) | 5 % ... 95 % (non-condensing) |
| Permissible humidity (storage/transport) | 5 % ... 95 % (non-condensing) |
| Air pressure (operation) | 86 kPa ... 108 kPa (up to 1500 m above sea level) |
| Air pressure (storage/transport) | 66 kPa ... 108 kPa (up to 3500 m above sea level) |

Approvals

Conformity/Approvals

| | |
|------------------|------------------------------------|
| UL, USA / Canada | Class I, Div. 2, Groups A, B, C, D |
|------------------|------------------------------------|

EMC data

| | |
|---------------------------------|--|
| Conformance with EMC directives | IEC 61000-6-2 IEC 61000-4-2 (ESD) Criterion B |
| | IEC 61000-4-3 (immunity to radiated interference) Criterion A |
| | IEC 61000-4-4 (burst) Criterion B |
| | IEC 61000-4-5 (surge) Criterion B |
| | IEC 61000-4-6 (immunity to conducted interference) Criterion A |
| | IEC 61000-4-8 (immunity to magnetic fields) Criterion A |
| | EN 55022 (emitted interference) Criterion A |
| Noise immunity | EN 61000-6-2 |
| Electromagnetic compatibility | Conformance with EMC Directive 2004/108/EC |
| Noise emission | EN 61000-6-4 |

FL SWITCH SFNB 5TX - Industrial Ethernet Switch



2891001

<https://www.phoenixcontact.com/gb/products/2891001>

System properties

Functionality

| | |
|-----------------|---|
| Basic functions | Unmanaged switch / auto negotiation, complies with IEEE 802.3, store and forward switching mode |
|-----------------|---|

Signaling

| | |
|----------------|---|
| Status display | LEDs: U _S , link and activity per port |
|----------------|---|

FL SWITCH SFNB 5TX - Industrial Ethernet Switch












2891001

<https://www.phoenixcontact.com/gb/products/2891001>

Approvals

To download certificates, visit the product detail page: <https://www.phoenixcontact.com/gb/products/2891001>

| | |
|---|---|
|  | IECEE CB Scheme Approval ID: DK-88783-M1-UL |
|  | EAC Approval ID: RU*-DE.*.B.00741/19 |
|  | UL Listed Approval ID: FILE E 140324 |
|  | cUL Listed Approval ID: FILE E 140324 |
|  | KC Approval ID: KCC-REI-PCK-FL289100 |
|  | cUL Listed Approval ID: FILE E 238705 |
|  | UL Listed Approval ID: FILE E 238705 |
|  | cUL Listed Approval ID: FILE E 199827 |
|  | UL Listed Approval ID: FILE E 199827 |
| | cULus Listed |

FL SWITCH SFNB 5TX - Industrial Ethernet Switch



2891001

<https://www.phoenixcontact.com/gb/products/2891001>

Classifications

ECLASS

| | |
|-------------|----------|
| ECLASS-11.0 | 19170402 |
| ECLASS-12.0 | 19170402 |
| ECLASS-13.0 | 19170402 |

ETIM

| | |
|----------|----------|
| ETIM 9.0 | EC000734 |
|----------|----------|

UNSPSC

| | |
|-------------|----------|
| UNSPSC 21.0 | 43222600 |
|-------------|----------|

FL SWITCH SFNB 5TX - Industrial Ethernet Switch



2891001

<https://www.phoenixcontact.com/gb/products/2891001>

Environmental product compliance

| | |
|---|---|
| EU RoHS | |
| Fulfills EU RoHS substance requirements | Yes |
| Exemption | 15(a), 6(c), 7(a), 7(c)-I |
| China RoHS | |
| Environment friendly use period (EFUP) | EFUP-10 |
| | An article-related China RoHS declaration table can be found in the download area for the respective article under "Manufacturer declaration". For all articles with EFUP-E, no China RoHS declaration table issued and required. |
| EU REACH SVHC | |
| REACH candidate substance (CAS No.) | Lead(CAS: 7439-92-1) |
| SCIP | d7fb5d8e-21b7-48b1-8d08-ce67c6815f60 |

2891001

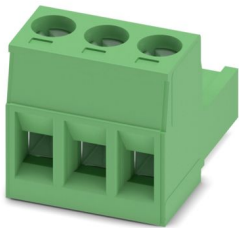
<https://www.phoenixcontact.com/gb/products/2891001>

Accessories

MSTB 2,5/ 3-ST - PCB connector

1754465

<https://www.phoenixcontact.com/gb/products/1754465>



PCB connector, nominal cross section: 2.5 mm², color: green, nominal current: 12 A, rated voltage (III/2): 320 V, contact surface: Tin, contact connection type: Socket, number of potentials: 3, number of rows: 1, number of positions: 3, number of connections: 3, product range: MSTB 2,5/...-ST, pitch: 5 mm, connection method: Screw connection with tension sleeve, screw head form: L Slotted, conductor/PCB connection direction: 0 °, locking clip: - Locking clip, plug-in system: COMBICON MSTB 2,5, locking: without, mounting: without, type of packaging: packed in cardboard

DT-LAN-CAT.6+ - Surge protection device

2881007

<https://www.phoenixcontact.com/gb/products/2881007>



Surge protection in accordance with Class E_A (CAT6_A), for Gigabit Ethernet (up to 10 Gbps), token ring, FDDI/CDDI, ISDN, and DS1. Suitable for Power over Ethernet (PoE++ / 4PPoE) "Mode A" and "Mode B". RJ45 attachment plug with separate grounding cable and ground connection snap-on foot for NS 35 DIN rails.

FL SWITCH SFNB 5TX - Industrial Ethernet Switch



2891001

<https://www.phoenixcontact.com/gb/products/2891001>

FL CAT5 PATCH 0,5 - Patch cable

2832263

<https://www.phoenixcontact.com/gb/products/2832263>



Patch cable, CAT5, assembled, 0.5 m

FL CAT5 PATCH 1,0 - Patch cable

2832276

<https://www.phoenixcontact.com/gb/products/2832276>



Patch cable, CAT5, assembled, 1 m

FL SWITCH SFNB 5TX - Industrial Ethernet Switch



2891001

<https://www.phoenixcontact.com/gb/products/2891001>

FL CAT5 PATCH 2,0 - Patch cable

2832289

<https://www.phoenixcontact.com/gb/products/2832289>

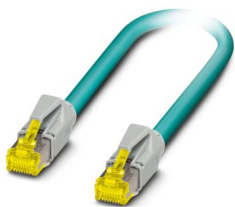


Patch cable, CAT5, assembled, 2 m

NBC-R4AC-R4AC-IE8A/.../... - Patch cable

1411854

<https://www.phoenixcontact.com/gb/products/1411854>



Patch cable, degree of protection: IP20, number of positions: 8, 10 Gbps, CAT6_A, cable outlet: straight, Ethernet

FL SWITCH SFNB 5TX - Industrial Ethernet Switch



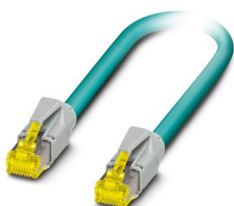
2891001

<https://www.phoenixcontact.com/gb/products/2891001>

NBC-R4AC/10G-R4AC/10G-94F/2,0 - Patch cable

1408360

<https://www.phoenixcontact.com/gb/products/1408360>

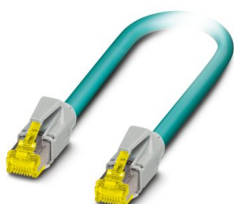


Patch cable, CAT6_A, 4-pair, shielded, connection not crossed (line), assembled at both ends with RJ45/IP20 connectors, outer sheath material: PUR, length: 2.0 m

NBC-R4AC/10G-R4AC/10G-94F/3,0 - Patch cable

1408365

<https://www.phoenixcontact.com/gb/products/1408365>



Patch cable, CAT6_A, 4-pair, shielded, connection not crossed (line), assembled at both ends with RJ45/IP20 connectors, outer sheath material: PUR, length: 3.0 m

FL SWITCH SFNB 5TX - Industrial Ethernet Switch



2891001

<https://www.phoenixcontact.com/gb/products/2891001>

FL DIN RA - DIN rail adapter

2891053

<https://www.phoenixcontact.com/gb/products/2891053>

The FL DIN RA is installed in a standard, 19-inch rack (EIA-310-D, IEC 60297-3-100) to allow DIN rail mounted equipment to be rack mounted.

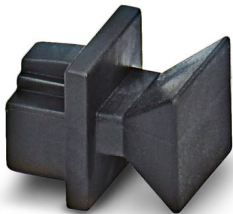


FL RJ45 PROTECT CAP - Dust protection

2832991

<https://www.phoenixcontact.com/gb/products/2832991>

Dust protection caps for RJ45 socket



FL SWITCH SFNB 5TX - Industrial Ethernet Switch



2891001

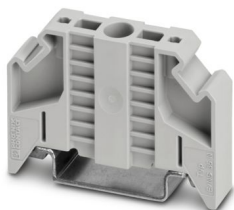
<https://www.phoenixcontact.com/gb/products/2891001>

E/NS 35 N - End bracket

0800886

<https://www.phoenixcontact.com/gb/products/0800886>

End clamp, width: 9.5 mm, color: gray



FL SEC PAC 4TX - Port Guard Security Element

2832865

<https://www.phoenixcontact.com/gb/products/2832865>

Layer1 security elements for 4 RJ45 network connections for use with patch boxes and panels



Phoenix Contact 2024 © - all rights reserved

<https://www.phoenixcontact.com>

PHOENIX CONTACT Ltd

Halesfield 13, Telford

Shropshire, TF7 4PG

01952 681700

info@phoenixcontact.co.uk