

# High-current probe

## HSS-827 302 200 S 1502 M

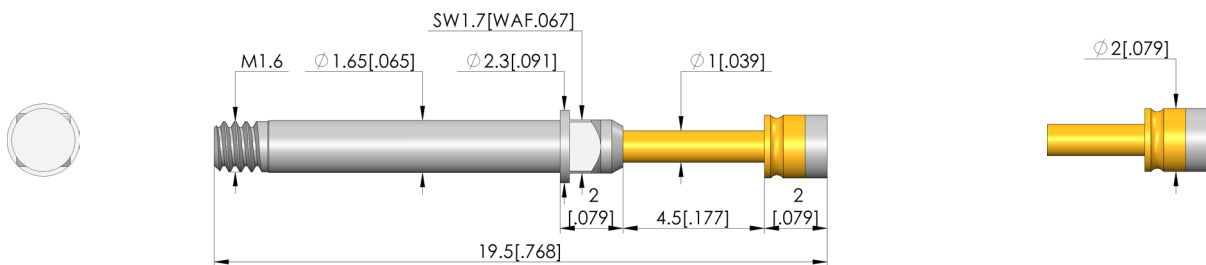
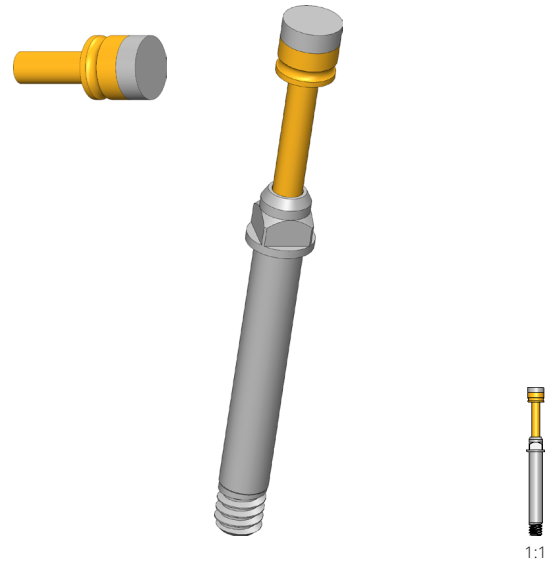
Item HSS-827-0006



**ingun**<sup>®</sup>

Partner for Future Technology

- Short-stroke high-current probes with optimum size to current load capacity ratio
- Low resistance probe with Ri typical: < 10 mOhm
- For use in applications with limited space
- Secure hold in the receptacle due to threaded connection



### General data

Product group:	High-current test probe
Sub-product group:	Short stroke HSS
Series:	HSS-827 M screw-in
Grid:	2.54 mm [100 mil]
Contacting from:	Pin, posts, bead, flat contact
Magnetic:	Yes
Installation type:	Screw-in
Quick-exchange system:	Yes
Adjustable installation height:	No
Non-rotating:	No
Screw-in torque:	3 - 5 cNm [.265 - .442 lbf-in]
Compatible receptacle(s):	KS-427 M
Min. temperature:	- 100 °C [- 212 °F]
Max. temperature:	+ 200 °C [+ 392 °F]
RoHS-compliant:	RoHS-3;6c

### Electrical data

Current load capacity / rated current:	20 A
Typical resistance (Ri):	<10 mOhm

### Mechanical data

Total length:	19.5 mm [.767 in]
Barrel diameter:	1.65 mm [.064 in]
Maximum stroke:	4.5 mm [.177 in]
Spring pre-load:	0.41 N [1.47 ozf]
Collar height:	02
Spring force at working stroke:	1.5 N [5.39 ozf]
Recommended working stroke:	3.5 mm [.137 in]

### Tip style data

Tip style:	02 flat
Tip diameter:	2 mm [.078 in]
Tip style surface:	S silver
Tip style material:	3 CuBe

HIGH-CURRENT TEST PROBE

# High-current probe

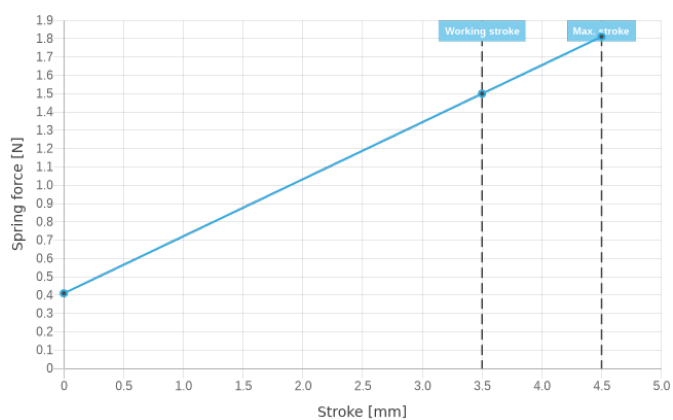
## HSS-827 302 200 S 1502 M

Item HSS-827-0006



**ingun**<sup>®</sup>

Partner for Future Technology



### INGUN Prüfmittelbau GmbH

Max-Stromeyer-Straße 162  
78467, Constance, Germany  
Phone +49 7531 8105-0  
Customer hotline +49 7531 8105-888  
Fax +49 7531 8105-65  
info@ingun.com



Prices and delivery times on request.  
Technical changes reserved. 04/24\_GB

Learn more about  
High-current test probe



ingun.com

HIGH-CURRENT TEST PROBE