

High-current probe

HSS-150 303 400 A 5002

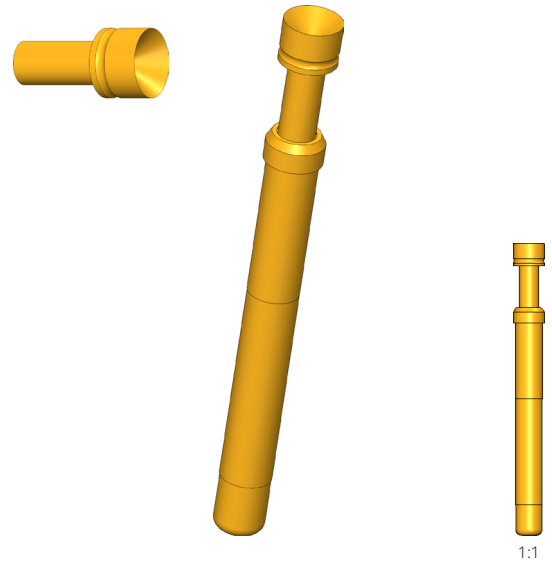
Item HSS-150-0003



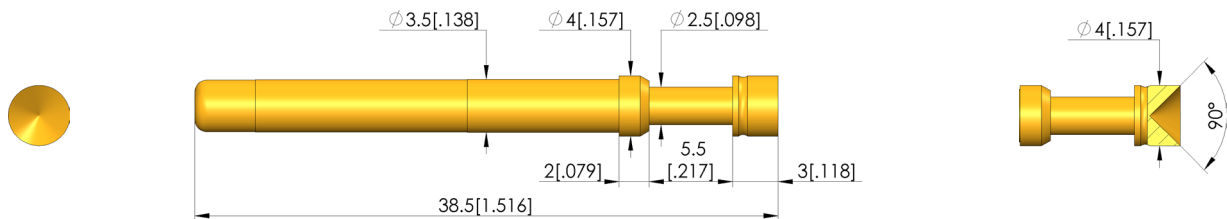
ingun[®]

Partner for Future Technology

- Trusted, robust high-current probes, optimally sized for current load capacity ratio
- Low resistance probe with R_i typical: < 10 mOhm
- For use in function and burn-in tests
- Large selection of tip styles and spring forces for optimum contact with DUT
- Optimum adjustment of the stroke ratios in the test fixture: The test probe collar is available in different heights, which, in combination with the receptacles, allows a range of installation heights



1:1



General data

Product group:
Sub-product group:
Series:
Grid:
Contacting from:
Magnetic:
Installation type:
Quick-exchange system:
Adjustable installation height:
Non-rotating:
Compatible receptacle(s):
Min. temperature:
Max. temperature:
RoHS-compliant:

High-current test probe
Standard HSS (press-in)
HSS-150
5.08 mm [200 mil]
Pin, posts
Yes
Plug-in
Yes
No
KS-150
- 100 °C [- 212 °F]
+ 200 °C [+ 392 °F]
RoHS-3;6c

Electrical data

Current load capacity / rated current:
Typical resistance (R_i):

50 A
<10 mOhm

Mechanical data

Total length:
Barrel diameter:
Maximum stroke:
Spring pre-load:
Collar height:
Spring force at working stroke:
Recommended working stroke:

38.5 mm [1.51 in]
3.5 mm [.137 in]
5.5 mm [.216 in]
2.18 N [.784 ozf]
02
5 N [17.9 ozf]
4.4 mm [.173 in]

Tip style data

Tip style:
Tip diameter:
Tip style surface:
Tip style material:

03 inverse cone
4 mm [.157 in]
A gold
3 CuBe

HIGH-CURRENT TEST PROBE

High-current probe

HSS-150 303 400 A 5002

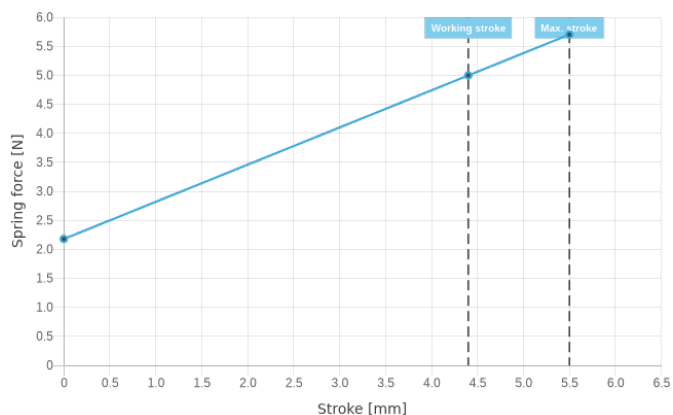
Item HSS-150-0003



GO TO PRODUCT

ingun[®]

Partner for Future Technology



INGUN Prüfmittelbau GmbH

Max-Stromeyer-Straße 162
78467, Constance, Germany
Phone +49 7531 8105-0
Customer hotline +49 7531 8105-888
Fax +49 7531 8105-65
info@ingun.com



Prices and delivery times on request.
Technical changes reserved. 04/24_GB

Learn more about
High-current test probe



HIGH-CURRENT TEST PROBE

ingun.com