

# Spring-loaded test probe

## GKS-967 304 130 A 1001 G

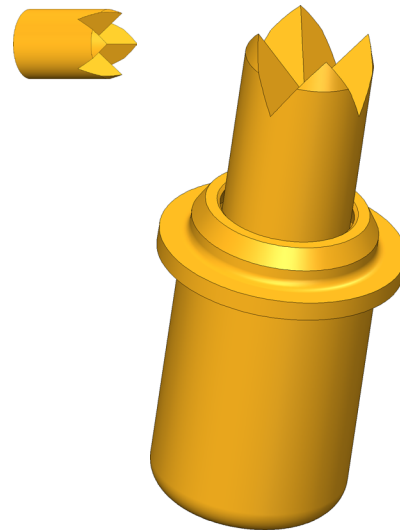
Item GKS-967-0036



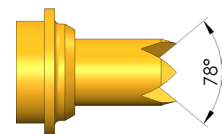
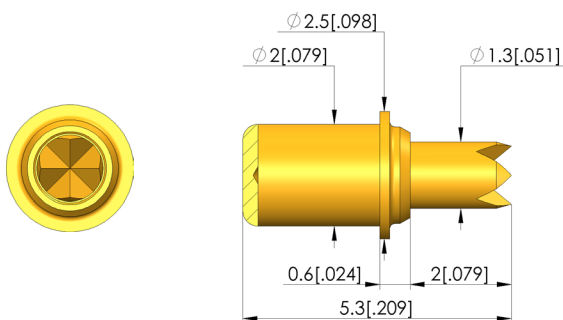
**ingun**<sup>®</sup>

Partner for Future Technology

- Short-stroke probes ensure a reliable signal and power supply, as well as a quick exchange of assemblies in case of maintenance
- For the construction of easily separable electronic interfaces, such as in charging trays for electronic devices
- Particularly suitable for use in applications where space for overall length is limited
- Compensation of possible height and component tolerances



1:1



### General data

Product group:	Assorted test probes
Sub-product group:	Short stroke GKS / charge and transfer GKS
Series:	GKS-967 G solderable version
Grid:	3 mm [118 mil]
Contacting from:	Pad, pin, posts
Magnetic:	Yes
Installation type:	Plug-in
Quick-exchange system:	Yes
Adjustable installation height:	No
Non-rotating:	No
Compatible receptacle(s):	KS-967, KS-967 25, KS-967 50
Min. temperature:	- 100 °C [- 212 °F]
Max. temperature:	+ 200 °C [+ 392 °F]
RoHS-compliant:	RoHS-3;6c

### Electrical data

Current load capacity / rated current:	5 A
Typical resistance (Ri):	<100 mOhm

### Mechanical data

Total length:	5.3 mm [.208 in]
Barrel diameter:	2 mm [.078 in]
Maximum stroke:	1.2 mm [.047 in]
Spring pre-load:	0.29 N [1.04 ozf]
Collar height:	01
Spring force at working stroke:	1 N [3.59 ozf]
Recommended working stroke:	1 mm [.039 in]

### Tip style data

Tip style:	04 4-point crown
Tip diameter:	1.3 mm [.051 in]
Tip style surface:	A gold
Tip style material:	3 CuBe

# Spring-loaded test probe

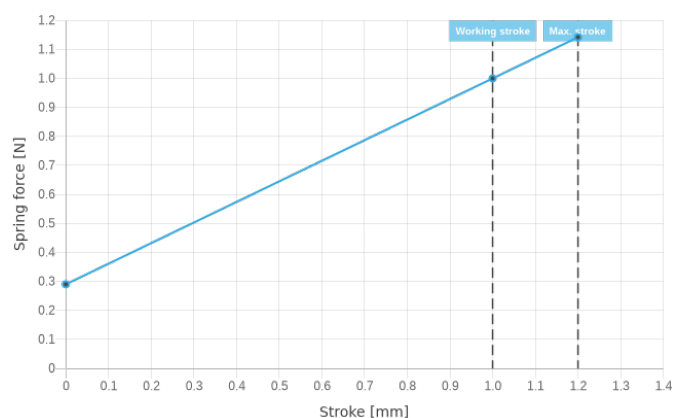
## GKS-967 304 130 A 1001 G

Item GKS-967-0036



**ingun**<sup>®</sup>

Partner for Future Technology



### INGUN Prüfmittelbau GmbH

Max-Stromeyer-Straße 162  
78467, Constance, Germany  
Phone +49 7531 8105-0  
Customer hotline +49 7531 8105-888  
Fax +49 7531 8105-65  
info@ingun.com



Prices and delivery times on request.  
Technical changes reserved. 04/24\_GB

Learn more about  
Test probes

