

# Spring-loaded test probe

## GKS-967 305 130 A 2001 M

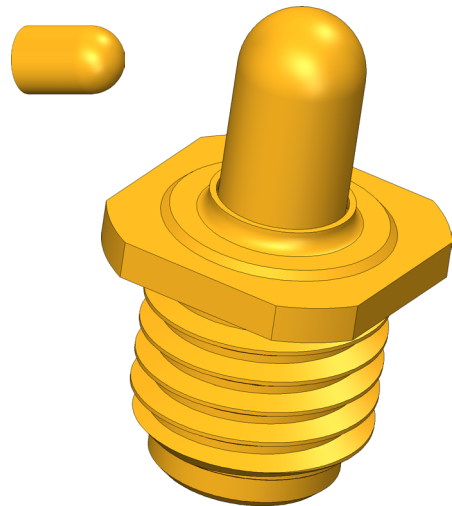
Item GKS-967-0044



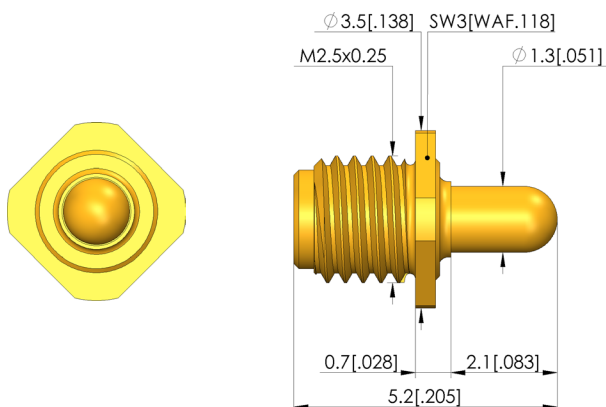
**ingun**<sup>®</sup>  
Partner for Future Technology

- Short-stroke probes ensure a reliable signal and power supply, as well as a quick exchange of assemblies in case of maintenance
- For the construction of easily separable electronic interfaces, such as in charging trays for electronic devices
- Compensation of possible height and component tolerances
- Secure hold in the receptacle due to threaded connection
- Stainless steel versions for temperatures from -100 °C up to +200 °C available

### INGUN SELECTION



1:1



SCREW-IN TEST PROBE

# Spring-loaded test probe

## GKS-967 305 130 A 2001 M

Item GKS-967-0044



GO TO PRODUCT

**ingun**<sup>®</sup>

Partner for Future Technology

### General data

Product group: Assorted test probes  
Sub-product group: Short stroke GKS / charge and transfer GKS  
Series: GKS-967 M screw-in  
Grid: 4 mm [157 mil]  
Contacting from: Pad, Female connector  
Magnetic: Yes  
Installation type: Screw-in  
Quick-exchange system: Yes  
Adjustable installation height: No  
Non-rotating: No  
Screw-in torque: 3 - 5 cNm [.265 - .442 lbf-in]  
Compatible receptacle(s): KS-967 M  
Min. temperature: - 40 °C [- 104 °F]  
Max. temperature: + 80 °C [+ 176 °F]  
RoHS-compliant: RoHS-3;6c

### Electrical data

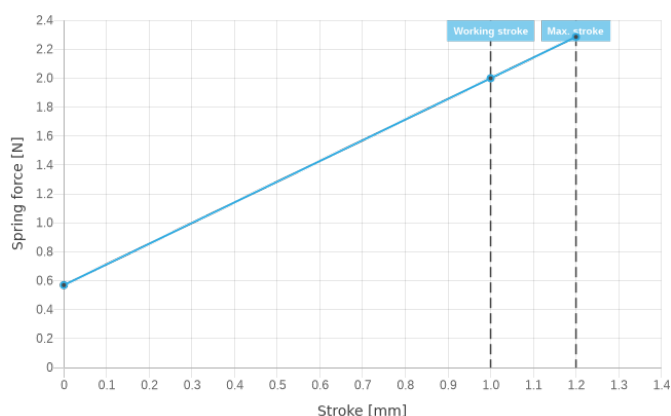
Current load capacity / rated current: 8 A  
Typical resistance (Ri): <10 mOhm

### Mechanical data

Total length: 5.2 mm [.204 in]  
Barrel diameter: 2.5 mm [.098 in]  
Maximum stroke: 1.2 mm [.047 in]  
Spring pre-load: 0.57 N [2.05 ozf]  
Collar height: 01  
Spring force at working stroke: 2 N [7.19 ozf]  
Recommended working stroke: 1 mm [.039 in]

### Tip style data

Tip style: 05 bullet-nosed (full radius)  
Tip diameter: 1.3 mm [.051 in]  
Tip style surface: A gold  
Tip style material: 3 CuBe



### INGUN Prüfmittelbau GmbH

Max-Stromeyer-Straße 162  
78467, Constance, Germany  
Phone +49 7531 8105-0  
Customer hotline +49 7531 8105-888  
Fax +49 7531 8105-65  
info@ingun.com



Prices and delivery times on request.  
Technical changes reserved. 04/24\_GB

Learn more about  
Screw-in test probe



ingun.com

SCREW-IN TEST PROBE