

Spring-loaded test probe

GKS-427 305 064 A 2502 M

Item GKS-427-0053

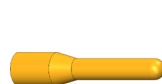


GO TO PRODUCT

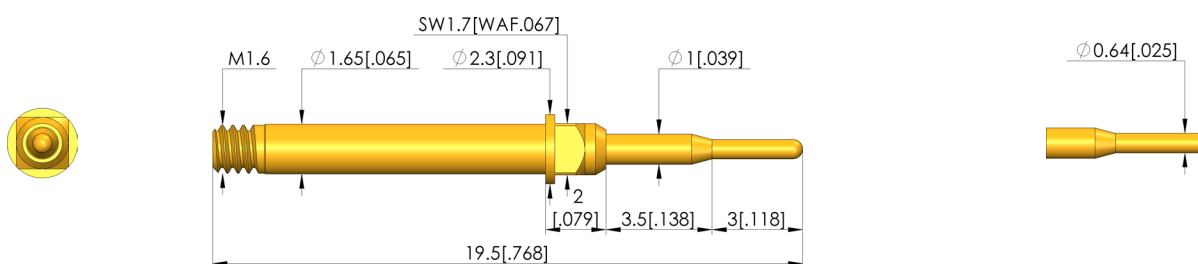
ingun[®]

Partner for Future Technology

- Short-stroke screw-in test probes for applications with possible vibrations or unwanted lateral and axial forces (migration of the test probes out of the receptacles is safely prevented)
- The screw-in test probe is securely installed in the KS using a torque screwdriver and bit tool. The required screw-in torque is applied via a square post on the receptacle.
- Stainless steel versions for temperatures from -100 °C up to +200 °C available



1:1



General data

Product group:	Screw-in test probe
Sub-product group:	Screw-in test probe
Series:	GKS-427 M screw-in
Grid:	2.54 mm [100 mil]
Contacting from:	Pad, Female connector
Magnetic:	Yes
Installation type:	Screw-in
Quick-exchange system:	Yes
Adjustable installation height:	No
Non-rotating:	No
Screw-in torque:	3 - 5 cNm [.265 - .442 lbf·in]
Compatible receptacle(s):	KS-427 M
Min. temperature:	- 40 °C [- 104 °F]
Max. temperature:	+ 80 °C [+ 176 °F]
RoHS-compliant:	RoHS-3;6c

Electrical data

Current load capacity / rated current:	8 A
Typical resistance (Ri):	<20 mOhm

Mechanical data

Total length:	19.5 mm [.767 in]
Barrel diameter:	1.65 mm [.064 in]
Maximum stroke:	4.5 mm [.177 in]
Spring pre-load:	0.4 N [1.43 ozf]
Collar height:	02
Spring force at working stroke:	2.5 N [8.99 ozf]
Recommended working stroke:	3.5 mm [.137 in]

Tip style data

Tip style:	05 bullet-nosed (full radius)
Tip diameter:	0.64 mm [.025 in]
Tip style surface:	A gold
Tip style material:	3 CuBe

SCREW-IN TEST PROBE

Spring-loaded test probe

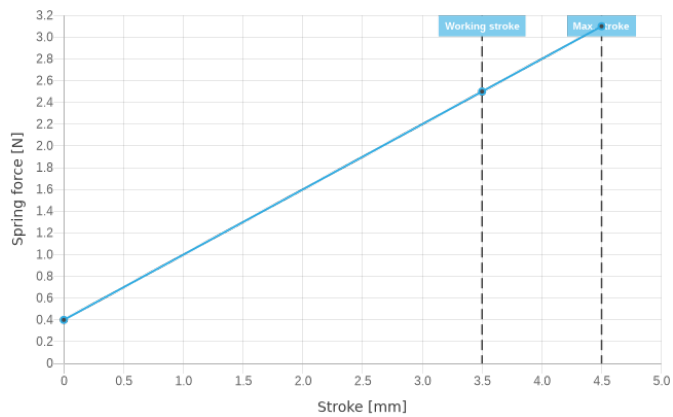
GKS-427 305 064 A 2502 M

Item GKS-427-0053



ingun[®]

Partner for Future Technology



INGUN Prüfmittelbau GmbH

Max-Stromeyer-Straße 162
78467, Constance, Germany
Phone +49 7531 8105-0
Customer hotline +49 7531 8105-888
Fax +49 7531 8105-65
info@ingun.com



Prices and delivery times on request.
Technical changes reserved. 04/24_GB

Learn more about
Screw-in test probe



SCREW-IN TEST PROBE

ingun.com