

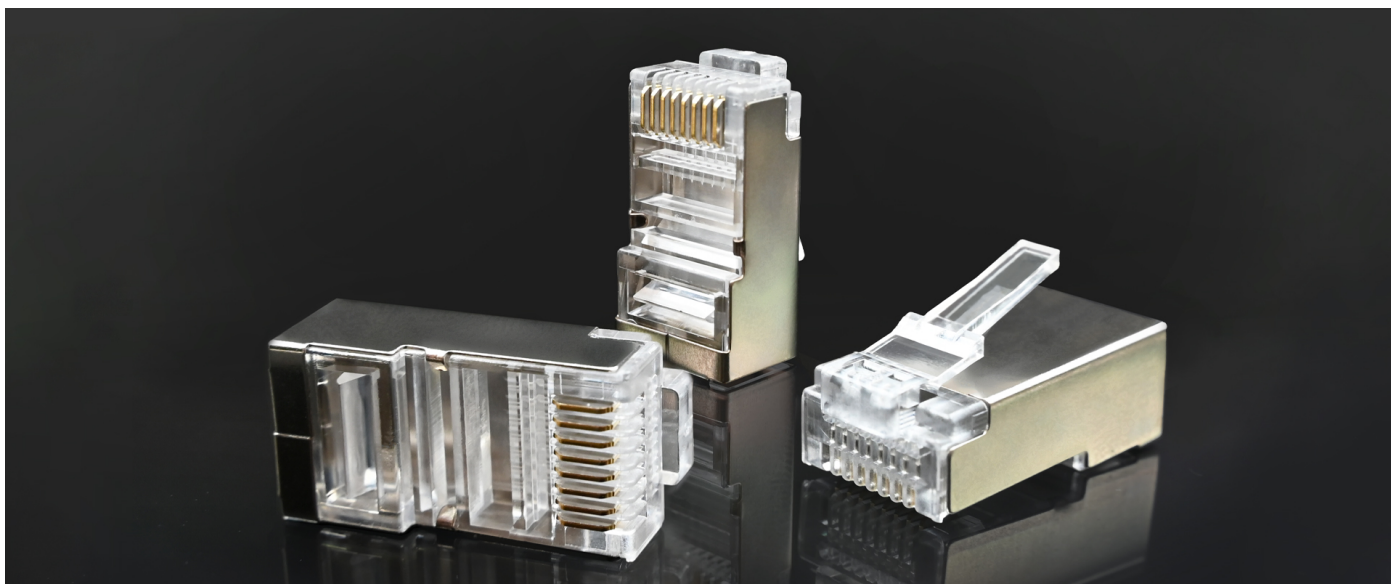


Qoltec RJ45 modular connector | CAT6 | FTP | Gold-plated contacts | 10 pieces

Product code: 54557

RJ45 connector commonly used to create connections in LANs, to connect Category Cat6 shielded Ethernet cables. The RJ45 connector has a distinctive metal housing that holds the wires in the correct order and provides mechanical protection. It has 8 pins and gold-plated contacts. The set contains 10 pieces.

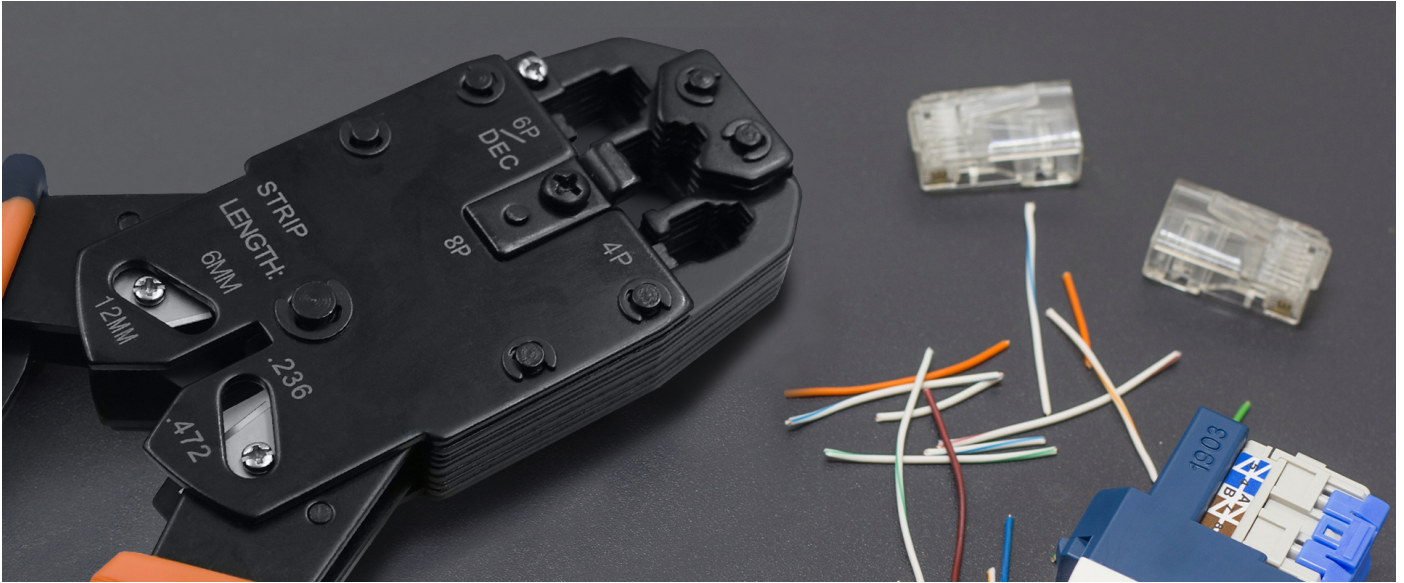
HIGHER CONNECTION RELIABILITY



Modular RJ45 UTP plugs with gold-plated contacts

A high quality set of transparent RJ45 connectors with modular construction, compatible with FTP Cat6 patchcord cables. The connector has gold-plated metal contacts for improved conductivity and corrosion protection. Thanks to the foil shielding, the Cat6 FTP connectors with gold-plated contacts are more resistant to electromagnetic interference. Designed for use in areas of intensive disturbance.

COMPATIBLE WITH UTP CAT6 PATCHCORD CABLES



Suitable for applications where stable and reliable data connections are required

Modular RJ45 CAT6 connectors are Category 6 compliant, meaning they are **capable of handling data transmission**, which is important in modern networks. Ideal for connecting various devices such as computers, printers, routers, monitoring, gaming consoles, etc. **This is the perfect solution for professionals** who value performance, precision and durability of their installations. We recommend using a dedicated crimping tool. Remember to make the plugs and cables compatible in terms of category to ensure optimum network performance.

CONFIDENCE CONFIRMED BY A WARRANTY



Quality Guarantee - Your Secure Connection

Do you care about the high quality of the product you are buying? Our solutions will meet your expectations. **The product comes with a 24-month guarantee valid from the date of purchase.**

TECHNICAL DATA

Producer	Qoltec
Standard	CAT6
Type connectors	FTP
Colour	Silver
Material	Metal + Plastic
Usage	Computer networks Home installations Audio/video systems
Additional information	10 pieces
Dimensions (D/L x W x H)	22 x 11 x 18 mm
Package contents	1 x Pack of 10 RJ45 CAT6 connectors
Package depth / length [mm]	100
Package width [mm]	70
Package height [mm]	10
Net weight [kg]	0.019
Gross weight [kg]	0.022
Warranty	24 month
EAN code	5901878545578