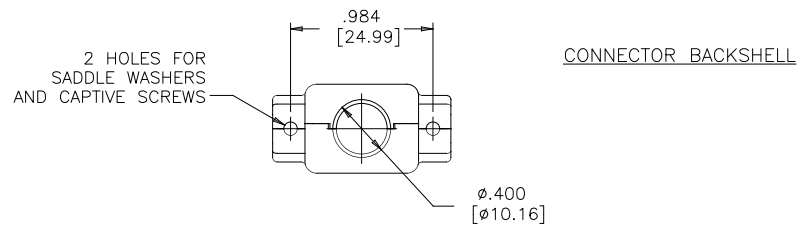
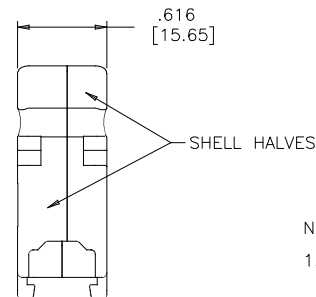
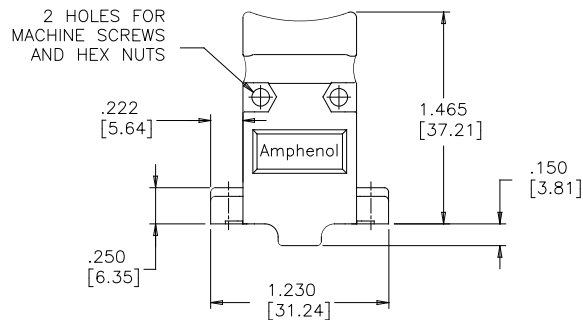
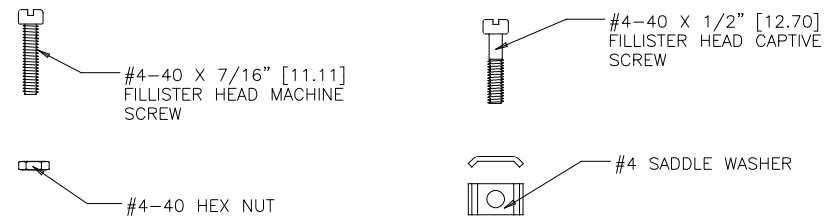


REVISIONS			
REV	DESCRIPTION, ECN, EAR NO.	DATE	APP'D
A	PROPOSAL DRAWING (EAR 14270)	MAR26/14	K.L.
B	PRODUCT DRAWING (EAR 15249)	TBD	E.Q.



### HARDWARE ITEMS



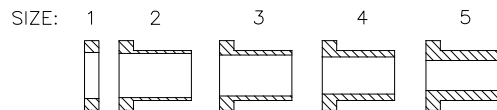
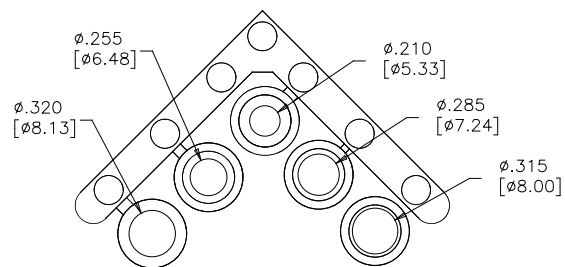
### NOTES:

1. EACH BACKSHELL KIT CONTAINS 2 SHELL HALVES, 1 COMPRESSION INSERT TREE AND 2 OF EACH HARDWARE ITEM SHOWN.
2. BACKSHELL IS SUITABLE FOR SUBMINIATURE D CONNECTOR, E SIZE SHELL (9 POSITION STANDARD CONTACTS OR 15 POSITION HIGH DENSITY CONTACTS).
3. COMPRESSION JACKET INSERTS ARE DESIGNED FOR A CABLE DIAMETER RANGE OF .210 [5.33] TO .320 [8.13].
4. MATERIALS – ALL MATERIALS ARE RoHS COMPLIANT  
SHELL – ZINC ALLOY, ZINC PLATED, HEXAVALENT CHROMIUM FREE FINISH.  
INSERT TREE – BLACK THERMOPLASTIC, 75 DUROMETER  
HARDWARE – STEEL, ZINC PLATED, HEXAVALENT CHROMIUM FREE FINISH

### ASSEMBLY INSTRUCTIONS:

1. SELECT THE TIGHTEST INSERT THAT WILL FIT OVER THE CABLE, AND FEED THE CABLE THROUGH IT, PLACING THE END WITH THE SMALLER OD (THE END WITHOUT THE WASHER) TOWARDS THE CONNECTOR.
2. TERMINATE THE CABLE WIRES TO THE CONNECTOR.
3. CUT THE JACKET, FOLD THE SHIELDING BACK OVER THE OUTSIDE OF THE INSERT AND CUT IT JUST SHORT OF THE WASHER.
4. INSTALL SADDLE WASHERS, CAPTIVE SCREWS AND CONNECTOR.
5. PLACE THE WASHER IN OUTERMOST DEPRESSION IN CABLE EXIT AREA OF THE BACKSHELL AND SCREW SHELL HALVES CLOSED.

### COMPRESSION INSERT TREE



WASHER OR WASHER  
PORTION OF INSERT

AMPHENOL PART NUMBER 17E-1657-09



UNLESS SPECIFIED OTHERWISE	DRAWN J.WOOD	SEP14/07
PRIMARY UNITS INCHES	CHECKED K.LAMBIE	OCT23/07
SECONDARY MILLIMETERS	M.E. APP'D	
REFERENCE IN PARENTHESES	Q.A. APP'D	
GENERAL TOLERANCES	DWG APP'D	
1 DECIMAL PLACE $\pm .02$	ENG. REL. NO. EAR 13158	
2 DECIMAL PLACES $\pm .013$	REF.	
3 DECIMAL PLACES	THIRD ANGLE PROJECTION	DO NOT SCALE DRAWING
ANGULAR DEGREES $\pm 2^\circ$		

<b>Amphenol Canada Corp.</b> Commercial Products			
17E SERIES METAL BACKSHELL FOR D-SUB CONNECTOR WITH E SIZE SHELL (9 STD OR 15 HD CONTACTS) , STRAIGHT EXIT, #4-40 THREAD, RoHS COMPLIANT			
DWG NO.	P-17E-1657-09	REV	B
CODE ID NO. Q3554	DWG SIZE X	SCALE 2:1	SHEET 1 OF 1