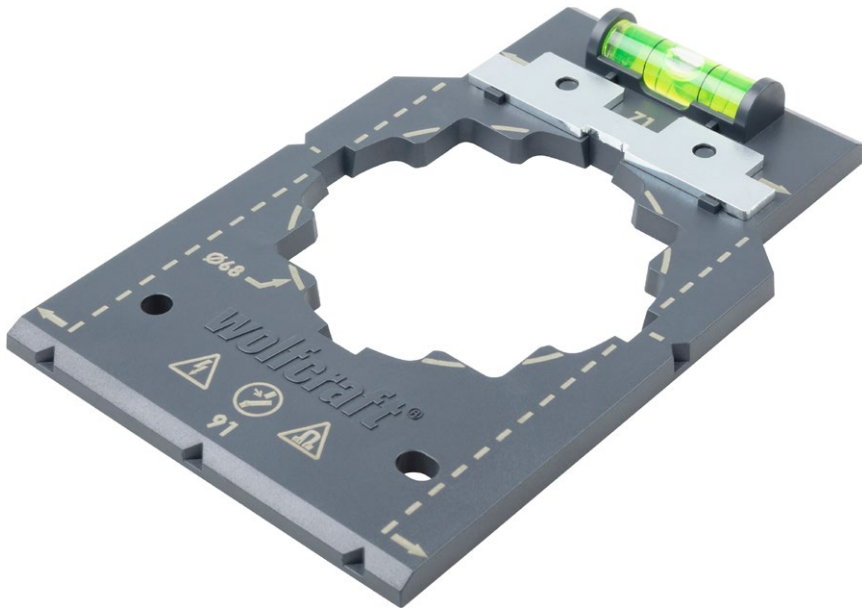


For fast, error-free installation of sockets and switch inserts in drywall



Properties

- marking and alignment template for fast, error-free installation of electrical installation boxes and the associated inserts in drywall and brick walls
- level for aligning the template to accurately mark the drilling position as well as for aligning the installation boxes and inserts
- robust plastic design for durability
- 71 mm side length and markings for easily copying the correct distances between two installation boxes, also when expanding installations
- 91 mm side length for easily copying the correct installation distances between power sockets and TV/network sockets
- 2 hole mounts for the screw heads in the hollow wall boxes, for controlled alignment and easy fastening in the drilled hole
- alignment and fastening are made easy by the insertable metal stop and magnetic rear for accurately fitting metallic sockets and switch inserts (Caution: Pay attention to the country-specific differences!)
- illustrated step-by-step instructions on how to correctly use the template for safe and convenient installation

Instructions

Before starting with the work, make sure that no voltage is present and observe the country-specific safety regulations (e.g. in Germany: DIN VDE 0105)!

Technical data

Working lengths 71 mm

Marking and Alignment Template



Article number	Contents	EAN-Code
5975000	1	<div> 4 006885 597501 4006885597501</div>
5975000	1	<div> 4 006885 597501 4006885597501</div>
5975000	1	<div> 4 006885 597501 4006885597501</div>