



Image may differ from product. See technical specification for details.

YET 209

Insert bearing with an eccentric locking collar and narrow inner ring

Insert bearings are based on sealed deep groove ball bearings. This variant is intended for use in applications where the direction of rotation is constant. It has a narrow inner ring extended on one side, with an eccentric locking collar, enabling quick and easy mounting onto the shaft.

- Designed for rotation in one direction
- Quick and easy to mount onto the shaft
- Long service life
- Reduce noise and vibration levels

Overview

Dimensions

Bore diameter	45 mm
Outside diameter	85 mm
Width, total	43.7 mm
Width, inner ring	30.2 mm
Width, outer ring	22 mm

Properties

Retaining feature, inner ring	Eccentric collar
Bore type	Cylindrical
Rolling elements	Balls
Outer ring type	Spherical
Inner ring extension	On one side
Cage	Non-metallic
Rubber seating ring	Without
Material, bearing	Bearing steel
Coating	Without
Sealing	Seal on both sides
Sealing type	Contact, standard
Lubricant	Grease
Relubrication feature	With

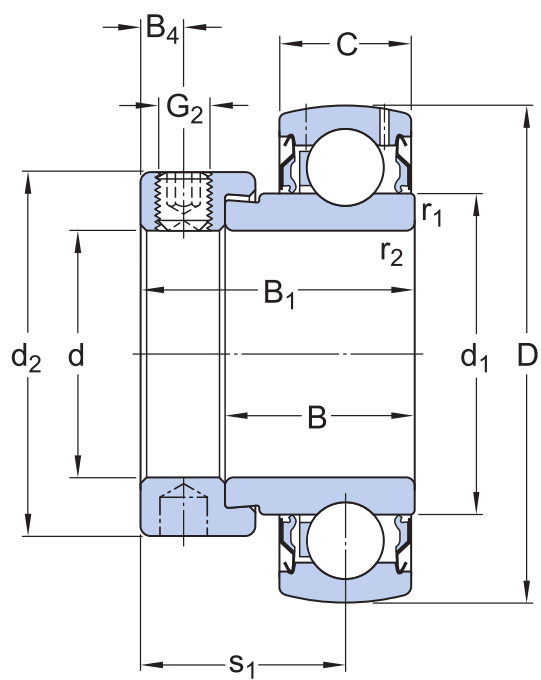
Performance

Basic dynamic load rating	33.2 kN
Basic static load rating	21.6 kN
Limiting speed	4 300 r/min
Note	Limiting speed with shaft tolerance h6

Logistics

Product net weight	0.649 kg
eClass code	23-05-08-02
UNSPSC code	31171536

Technical specification



Dimensions

d	45 mm	Bore diameter
D	85 mm	Outside diameter
B ₁	43.7 mm	Overall bearing width
B	30.2 mm	Width of inner ring
C	22 mm	Width of outer ring
d ₁	≈ 56.8 mm	Outside diameter of inner ring
d ₂	62 mm	Outside diameter of locking collar
B ₄	6.75 mm	Distance from side face to thread centre
r _{1,2}	min. 1 mm	Chamfer dimension of inner ring
s ₁	32.7 mm	Distance from locking device side face to raceway centre

Calculation data

Basic dynamic load rating	C	33.2 kN
Basic static load rating	C ₀	21.6 kN
Fatigue load limit	P _u	0.915 kN
Limiting speed		4 300 r/min
		Limiting speed with shaft tolerance h6
Calculation factor	f ₀	14

Mass

Mass	0.68 kg
------	---------

Mounting information

Set screw	G ₂	M10x1
Hexagonal key size for set screw	N	5 mm
Recommended tightening torque for set screw		16.5 N·m

Associated products

Rubber seating ring

RIS 209 A

Compatible products

Recommended product

Rubber seating ring for insert
bearing

[RIS 208 A](#)